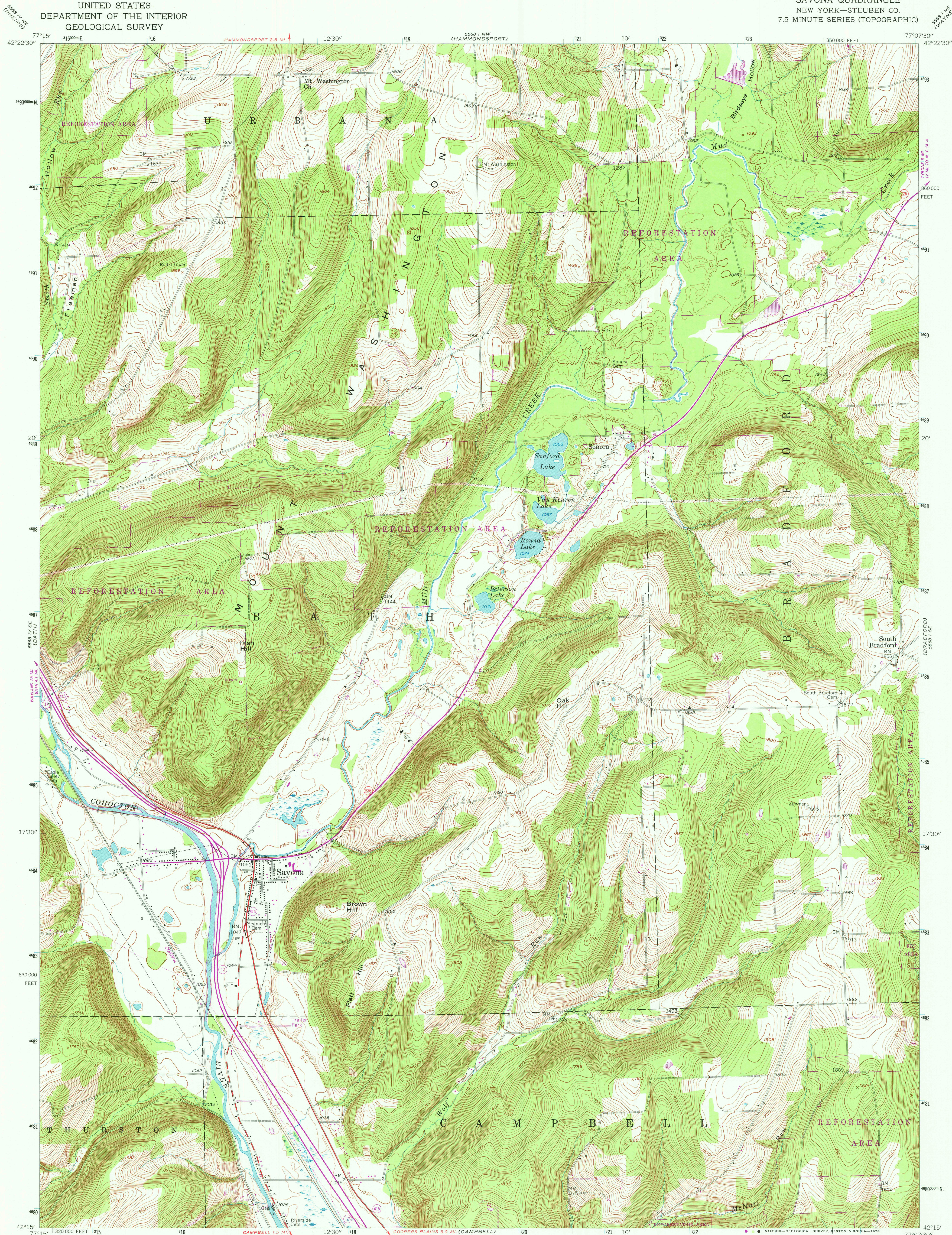


UNITED STATES  
DEPARTMENT OF THE INTERIOR  
GEOLOGICAL SURVEY

SAVONA QUADRANGLE  
NEW YORK—STEBEN CO.  
7.5 MINUTE SERIES (TOPOGRAPHIC)



Mapped, edited, and published by the Geological Survey

Control by USGS and USC&GS

Topography from aerial photographs by multiplex methods

Aerial photographs taken 1944. Field check 1953

Polyconic projection. 1927 North American datum

10,000-foot grid based on New York coordinate system,

central zone

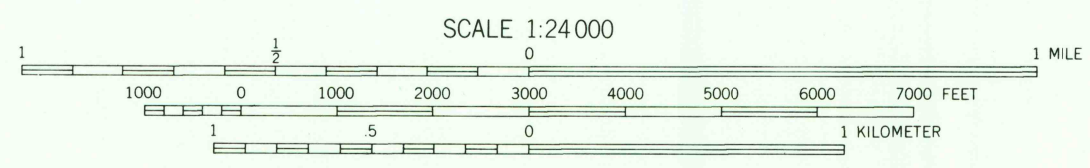
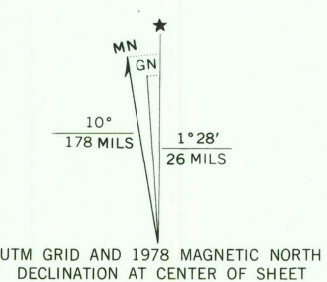
1000-meter Universal Transverse Mercator grid ticks,

zone 18, shown in blue

Revision shown in purple and woodland compiled from

aerial photographs taken 1976 and other source data.

This information not field checked. Map edited 1978



ROAD CLASSIFICATION	
Heavy-duty	Light-duty
Medium-duty	Unimproved dirt
U. S. Route	State Route

SAVONA, N. Y.

N 4215—W 7707.5/7.5

USGS  
Historical File  
Topographic Division

1953  
PHOTOREVISED 1978  
AMS 5568 I SW—SERIES V821

MAR 24 1979

2850