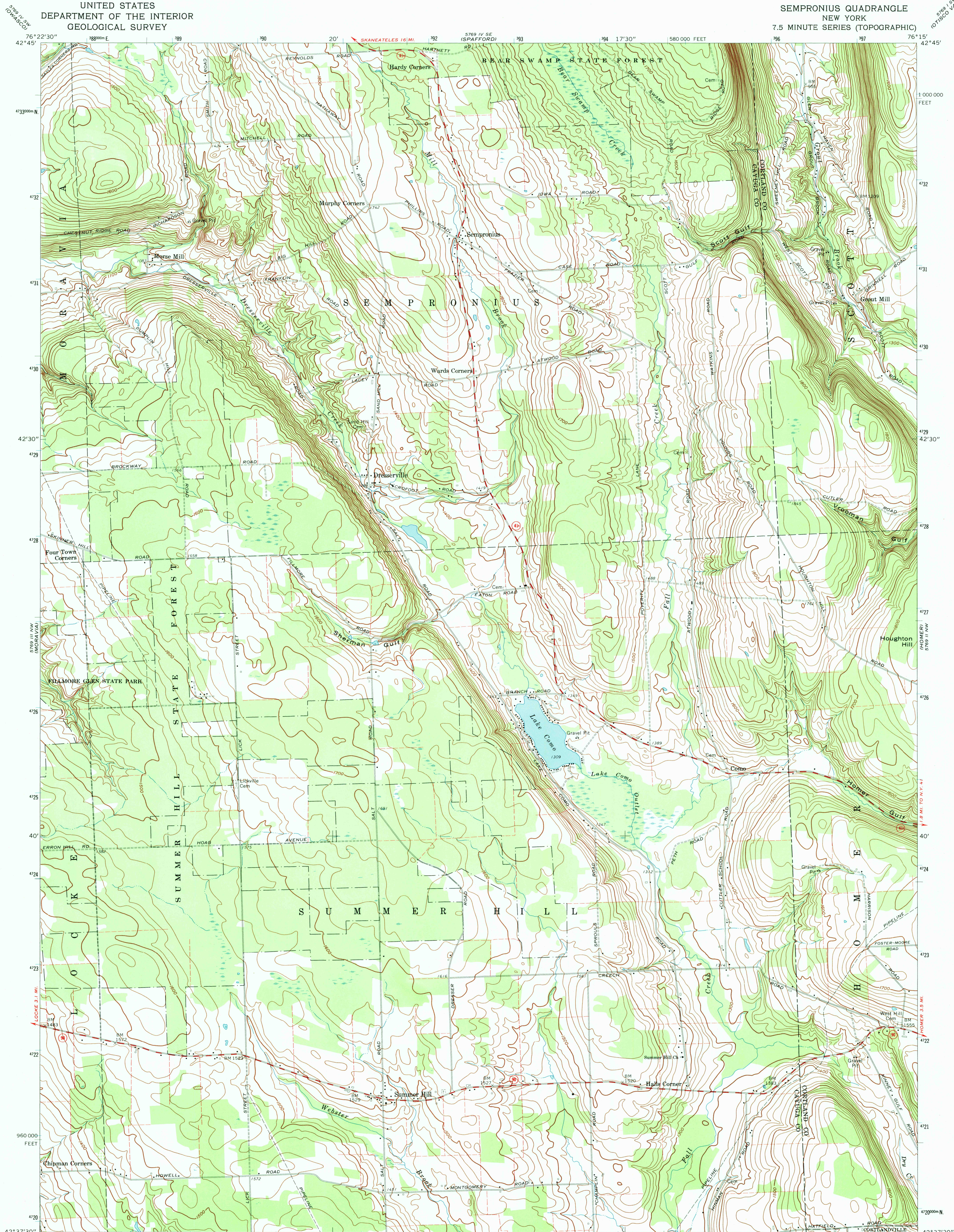
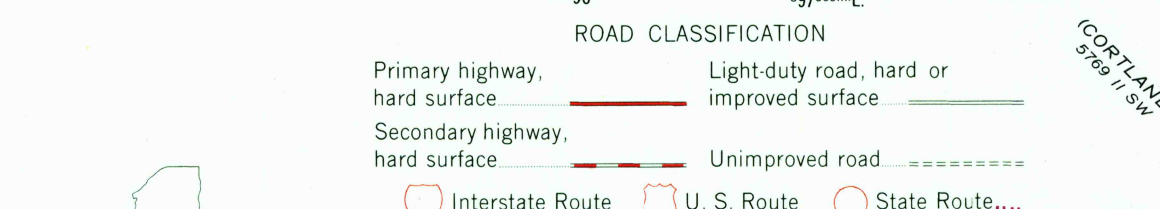
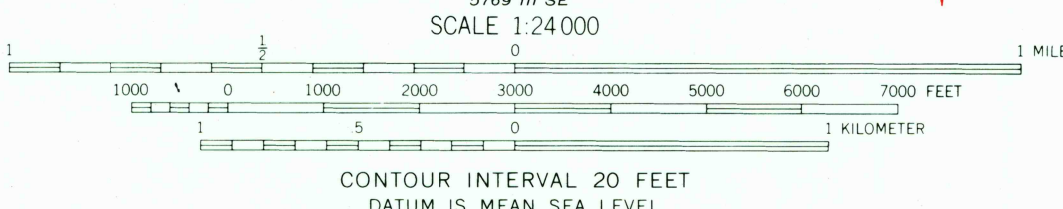
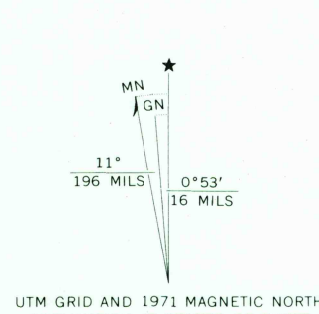


UNITED STATES
DEPARTMENT OF THE INTERIOR
GEOLOGICAL SURVEY

SEMPRONIUS QUADRANGLE
NEW YORK
7.5 MINUTE SERIES (TOPOGRAPHIC)



Mapped by the Army Map Service
Edited and published by the Geological Survey
Control by USGS, USC&GS, and Tennessee Valley Authority
Topography by photogrammetric methods from aerial photographs
taken 1942. Field checked 1943. Revised by the Geological Survey
from aerial photographs taken 1969. Field checked 1971
Polyconic projection, 1927 North American datum
10,000-foot grid based on New York coordinate system,
central zone
1000-meter Universal Transverse Mercator grid ticks,
zone 18, shown in blue
Fine red dashed lines indicate selected fence and field lines, where
generally visible on aerial photographs. This information is unchecked



THIS MAP COMPLIES WITH NATIONAL MAP ACCURACY STANDARDS
FOR SALE BY U. S. GEOLOGICAL SURVEY, WASHINGTON, D. C. 20242
A FOLDER DESCRIBING TOPOGRAPHIC MAPS AND SYMBOLS IS AVAILABLE ON REQUEST



USGS
Historical File
Topographic Division

SEMPRONIUS, N. Y.
N4237.5—W7615.5

1971

AMS 5769 III NE—SERIES V82 I

JUL 16 1974