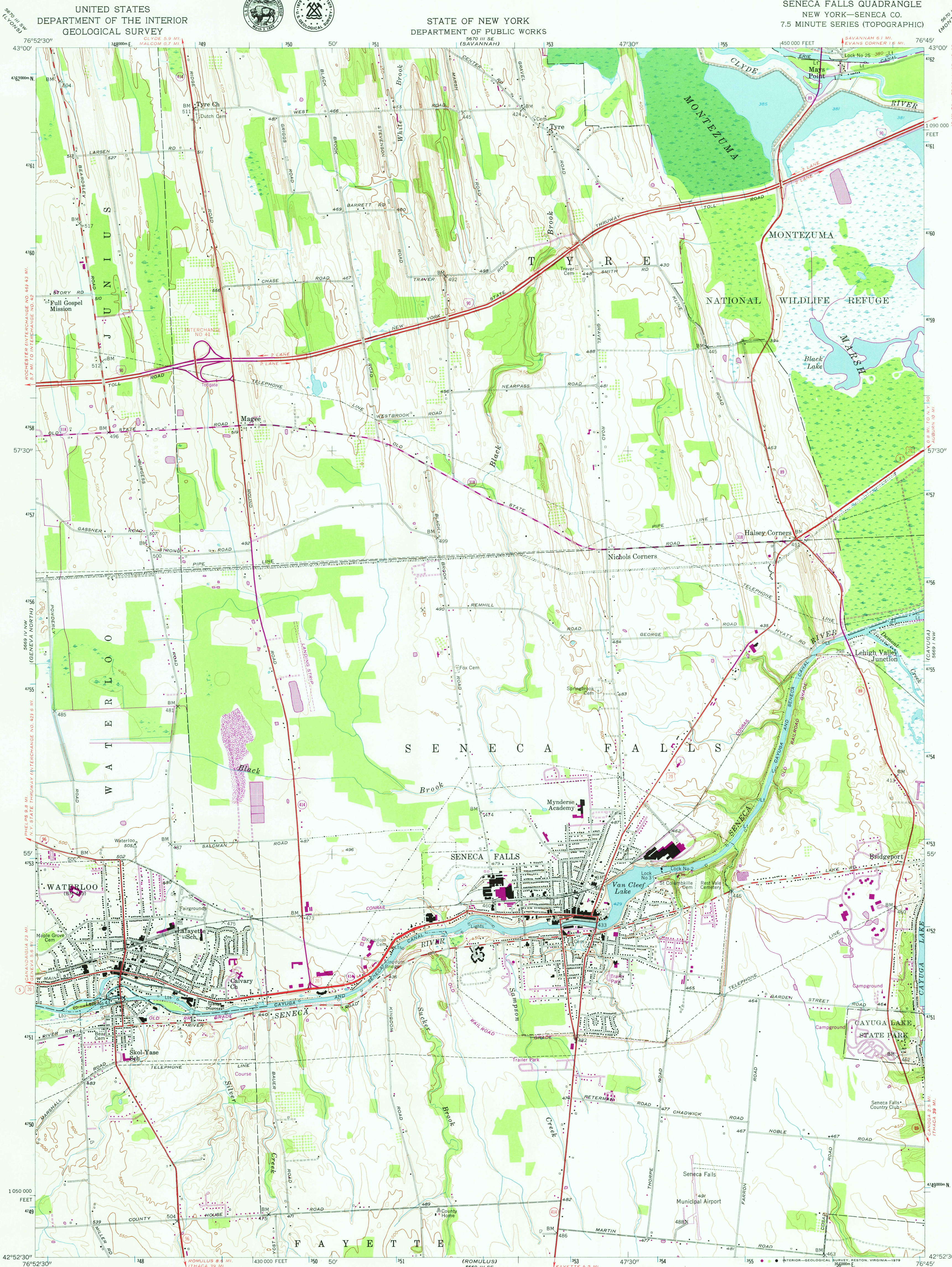


5670 I SW
(MONTEZUMA)
0.8 MI. TO INTERCHANGE NO. 40
SYRACUSE INTERCHANGE NO. 40 39 MI.



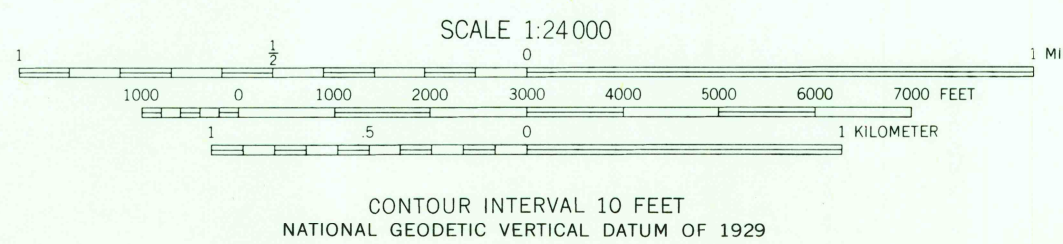
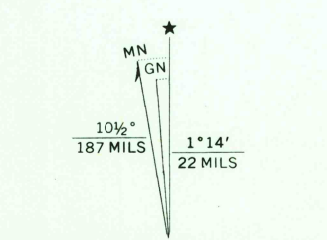
Mapped, edited, and published by the Geological Survey

Control by USGS, USC&GS, and TVA
Culture and drainage in part compiled by Corps of Engineers,
U. S. Army, from aerial photographs taken 1942
Topography by planetable surveys 1953

Polyconic projection. 1927 North American datum
10,000-foot grid based on New York coordinate system,
central zone
1000-meter Universal Transverse Mercator grid ticks,
zone 18, shown in blue

There may be private inholdings within the boundaries of
the National or State reservations shown on this map

Revisions shown in purple compiled from aerial photographs
taken 1976 and other source data. This information not
field checked. Map edited 1978



THIS MAP COMPLIES WITH NATIONAL MAP ACCURACY STANDARDS
FOR SALE BY U. S. GEOLOGICAL SURVEY, RESTON, VIRGINIA 22092
A FOLDER DESCRIBING TOPOGRAPHIC MAPS AND SYMBOLS IS AVAILABLE ON REQUEST

ROAD CLASSIFICATION
Primary highway, all weather, hard surface
Secondary highway, all weather, hard surface
Light-duty road, all weather, improved surface
Unimproved road, fair or dry weather
Interstate Route
U. S. Route
State Route



USGS
Historical File
Topographic Division

SENECA FALLS, N. Y.

N 4252.5 - W 7645.7/5

1953
PHOTOREVISED 1978
AMS 5669 IV NE-SERIES V821

APR 10 1978

2350