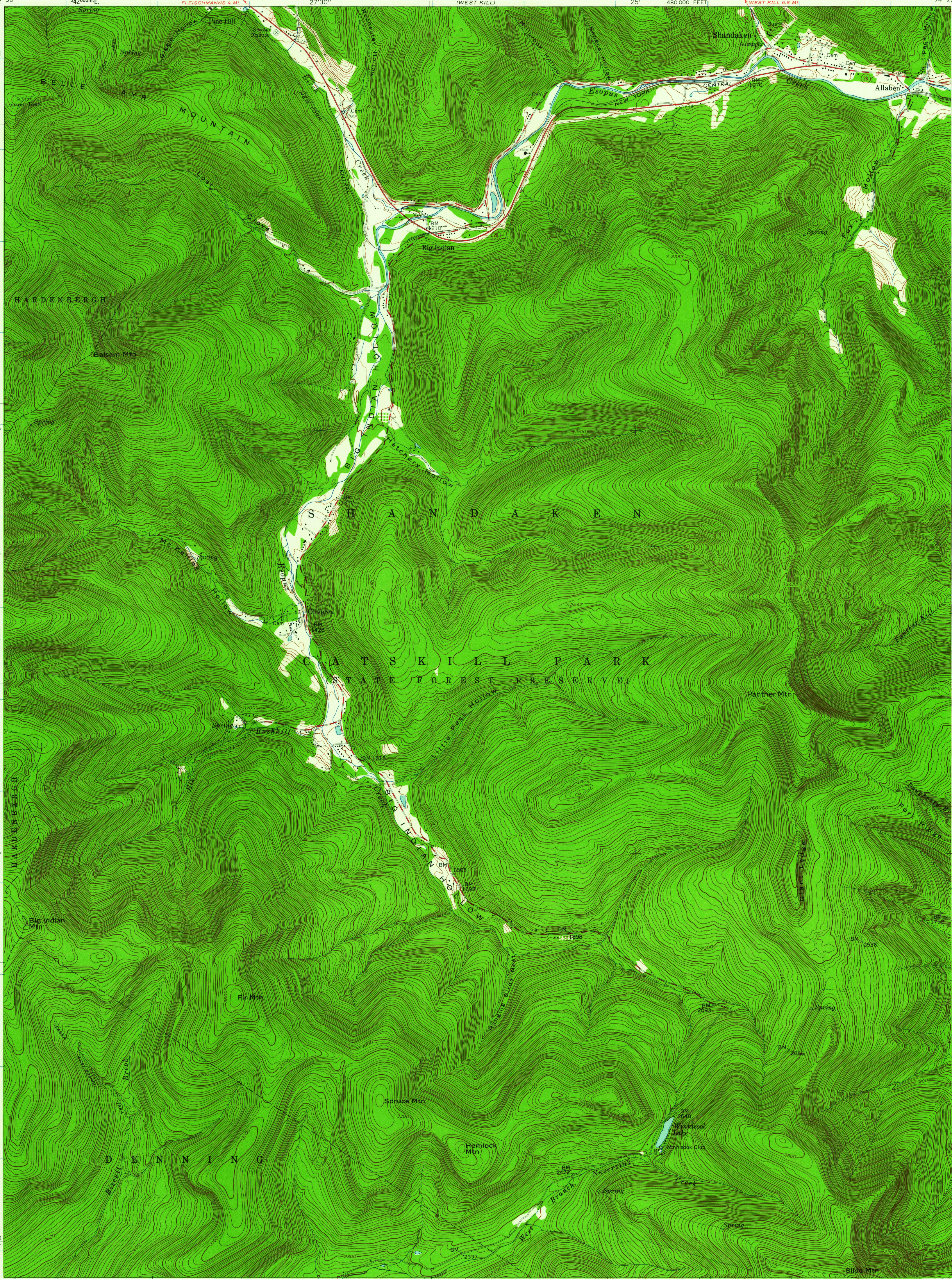


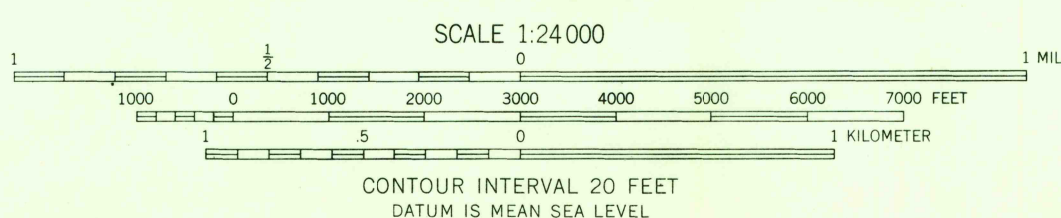
UNITED STATES
DEPARTMENT OF THE INTERIOR
GEOLOGICAL SURVEY

SHANDAKEN QUADRANGLE
NEW YORK-ULSTER CO.
7.5 MINUTE SERIES (TOPOGRAPHIC)

SW/4 PHOENICIA 15' QUADRANGLE



Maped by the Army Map Service
Edited and published by the Geological Survey
Control by USGS and USC&GS
Topography from aerial photographs by photogrammetric
methods. Aerial photographs taken 1943. Field check 1945
Culture revised by the Geological Survey 1960
Polyconic projection. 1927 North American datum
10,000-foot grid based on New York coordinate system,
east zone
1000-meter Universal Transverse Mercator grid ticks,
zone 18, shown in blue
Fine red dashed lines indicate selected fence and field lines where
generally visible on aerial photographs. This information is unchecked



THIS MAP COMPLIES WITH NATIONAL MAP ACCURACY STANDARDS
FOR SALE BY U.S. GEOLOGICAL SURVEY, WASHINGTON 25, D. C.
A FOLDER DESCRIBING TOPOGRAPHIC MAPS AND SYMBOLS IS AVAILABLE ON REQUEST



USGS
Historical File
Topographic Division

ROAD CLASSIFICATION
Heavy-duty ——— Light-duty ———
Medium-duty ——— Unimproved dirt ———
State Route

U.S.G.S. SHANDAKEN, N. Y.
SW/4 PHOENICIA 15' QUADRANGLE
N4200—W7422.5/7.5
1960
FILE COPY
TOPOGRAPHIC DIVISION

JAN 24 1962
JAN 24 1962

5215