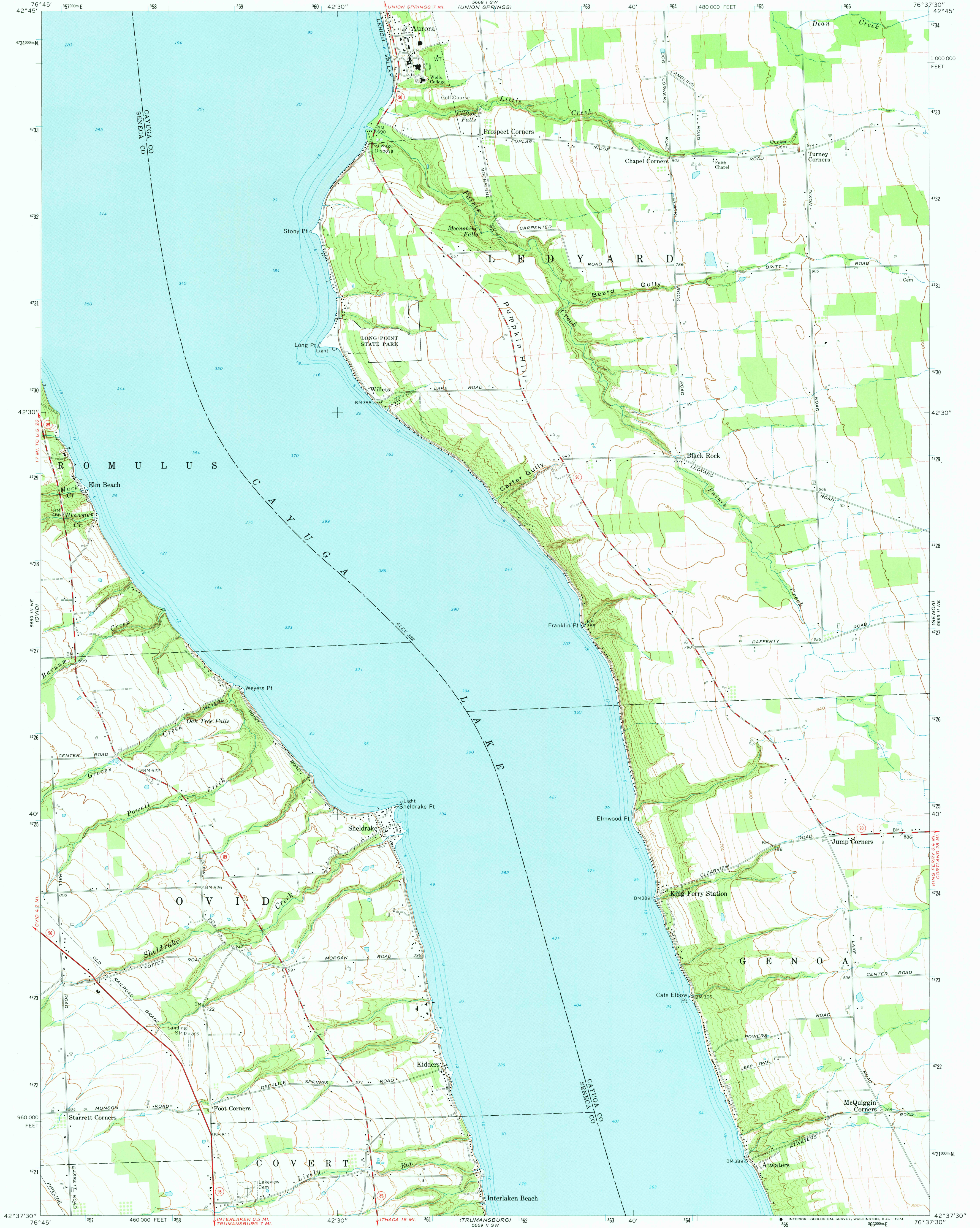


5669 1/2 SE
ROMULUS

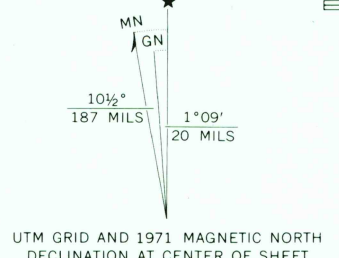
UNITED STATES
DEPARTMENT OF THE INTERIOR
GEOLOGICAL SURVEY

SHELDRAKE QUADRANGLE
NEW YORK
7.5 MINUTE SERIES (TOPOGRAPHIC)

5669 1/2 SE
SCIPPO CENTER



Mapped by the Army Map Service
Edited and published by the Geological Survey
Control by USGS, USC&GS, Tennessee Valley Authority,
and U. S. Lake Survey
Topography by photogrammetric methods from aerial photographs
taken 1942. Field checked 1942. Revised by the Geological Survey
from aerial photographs taken 1969. Field checked 1971
Selected hydrographic data compiled from U. S. Lake Survey Chart 151
(1971). This information is not intended for navigational purposes
Polyconic projection. 1927 North American datum
10,000-foot grid based on New York coordinate system, west zone
1000-meter Universal Transverse Mercator grid ticks,
zone 18, shown in blue
Fine red dashed lines indicate selected fence and field lines where
generally visible on aerial photographs. This information unchecked



SCALE 1:24,000
CONTOUR INTERVAL 20 FEET
DATUM IS MEAN SEA LEVEL
DEPTH CURVES AND SOUNDINGS IN FEET—DATUM IS 382 FEET



ROAD CLASSIFICATION
Primary highway, hard surface
Secondary highway, hard surface
Unimproved road
Interstate Route
U. S. Route
State Route

USGS
Historical File
Topographic Division

SHELDRAKE, N. Y.
N4237.5—W7637.5/7.5

1971
AMS 5669 1/2 NW—SERIES V821

MAY 23 1974

3640