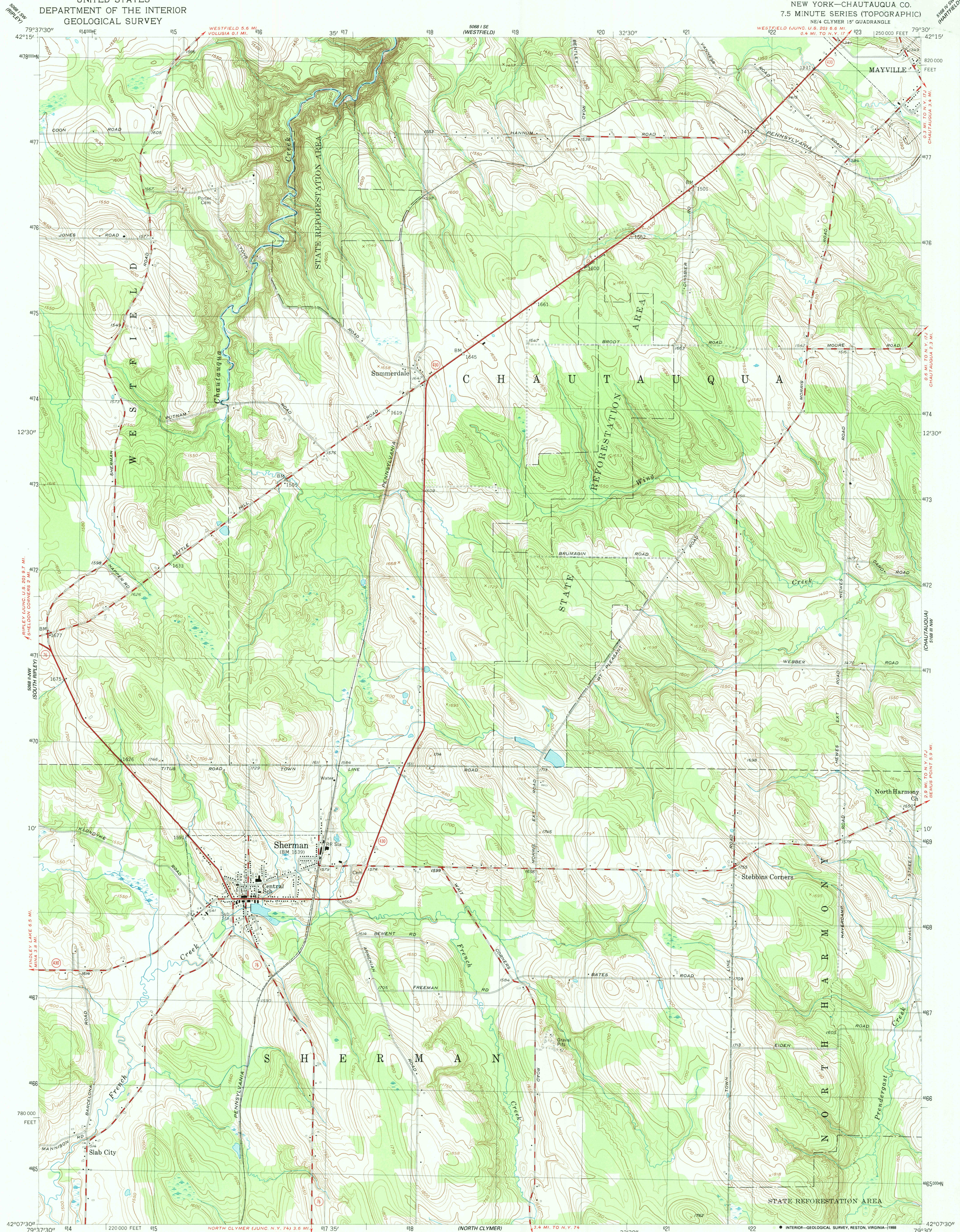
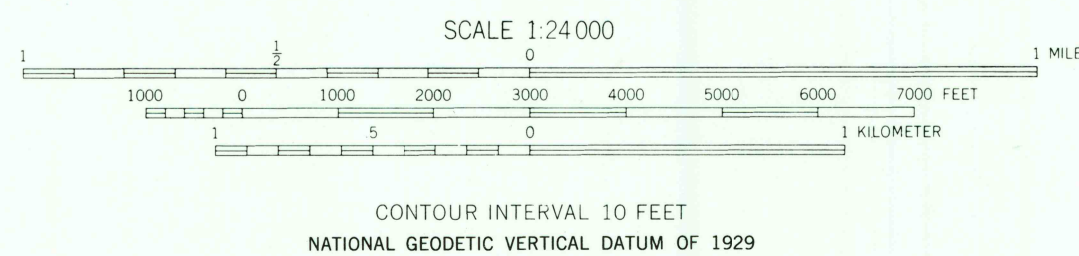
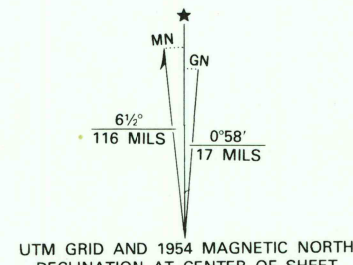


UNITED STATES
DEPARTMENT OF THE INTERIOR
GEOLOGICAL SURVEY

SHERMAN QUADRANGLE
NEW YORK—CHAUTAUQUA CO.
7.5 MINUTE SERIES (TOPOGRAPHIC)
NE 4 CLYMER 15' QUADRANGLE



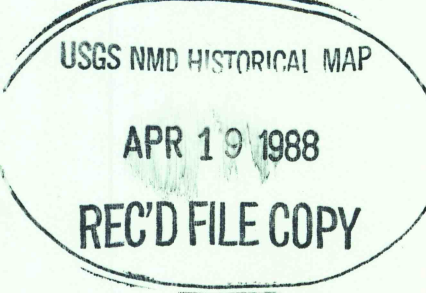
Mapped, edited, and published by the Geological Survey
Control by USGS, and USC&GS
Topography from aerial photographs by photogrammetric
methods. Aerial photographs taken 1953. Field check 1954
Polyconic projection. 1927 North American datum
10,000-foot grid based on New York coordinate system,
west zone
Unchecked elevations are shown in brown
1000-meter Universal Transverse Mercator grid, zone 17
To place on the predicted North American Datum 1983,
move the projection lines 2 meters south and
19 meters west as shown by dashed corner ticks



ROAD CLASSIFICATION
Heavy-duty ——— Light-duty ———
Medium-duty ——— Unimproved dirt ———
U.S. Route ——— State Route ———

SHERMAN, N. Y.
NE 4 CLYMER 15' QUADRANGLE
42079-B5-TF-024

1954
DMA 5068 II NE-SERIES V821



THIS MAP COMPLIES WITH NATIONAL MAP ACCURACY STANDARDS
FOR SALE BY U. S. GEOLOGICAL SURVEY, DENVER, COLORADO 80225, OR RESTON, VIRGINIA 22092
A FOLDER DESCRIBING TOPOGRAPHIC MAPS AND SYMBOLS IS AVAILABLE ON REQUEST