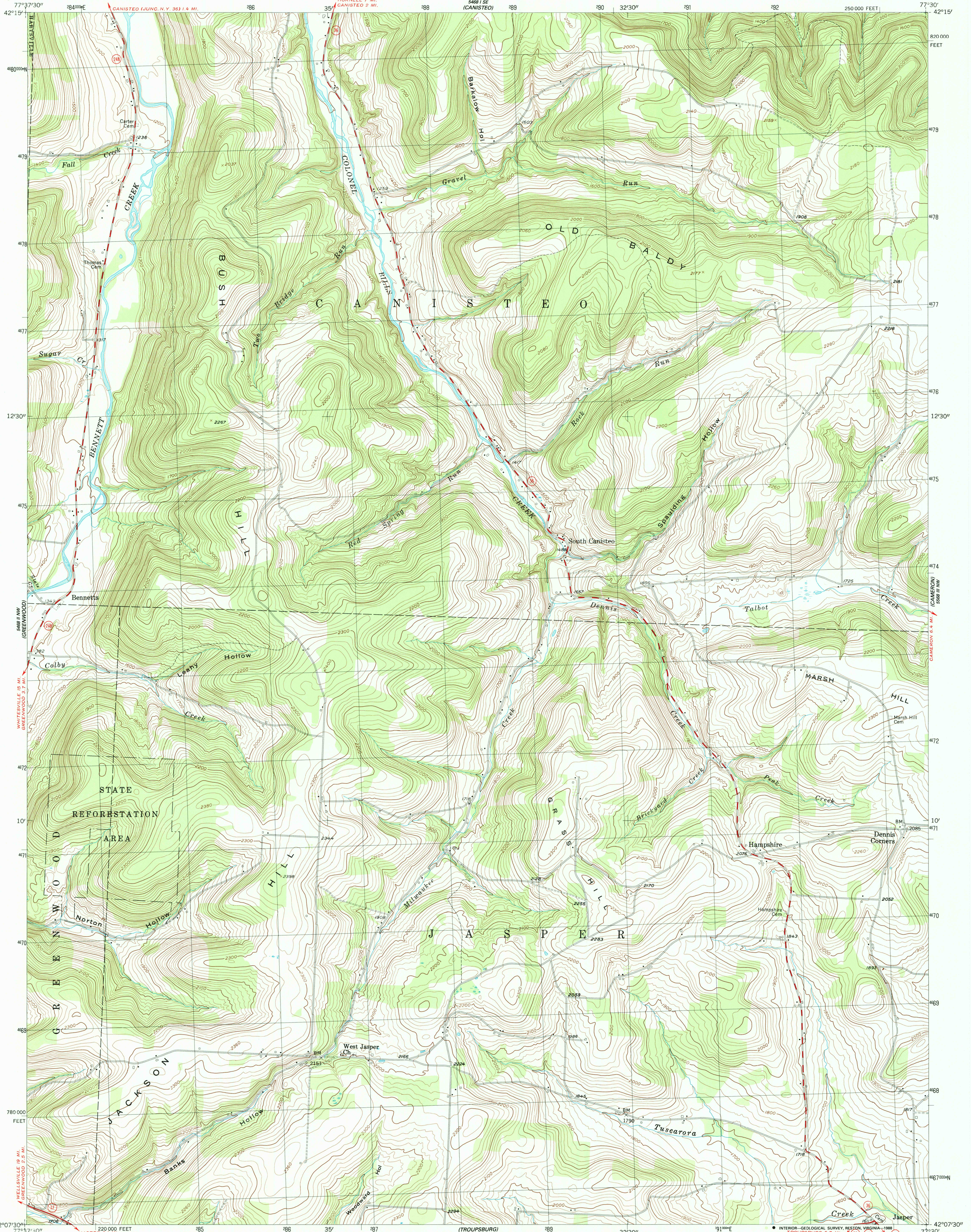


UNITED STATES  
DEPARTMENT OF THE INTERIOR  
GEOLOGICAL SURVEY

SOUTH CANISTEO QUADRANGLE  
NEW YORK—STEBEN CO.  
7.5 MINUTE SERIES (TOPOGRAPHIC)  
NE/4 GREENWOOD 15' QUADRANGLE

5468 15' SW  
(TOWLESVILLE)



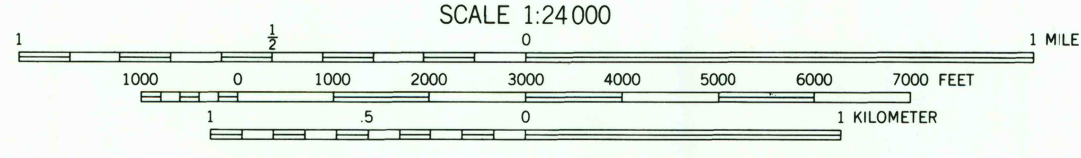
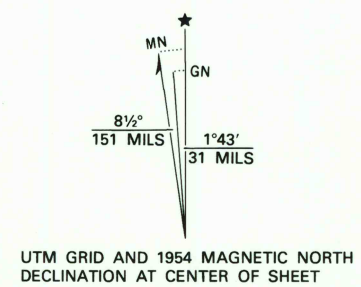
Maped, edited, and published by the Geological Survey  
Control by USGS

Topography from aerial photographs by multiplex methods  
Aerial photographs taken 1952. Field check 1954

Polyconic projection. 1927 North American datum  
10,000-foot grid based on New York coordinate system,  
central zone

Unchecked elevations are shown in brown  
1000-Meter Universal Transverse Mercator grid, zone 18

Map photinspected 1976  
No major culture or drainage changes observed



ROAD CLASSIFICATION  
Heavy-duty ——— Light-duty ———  
Medium-duty ——— Unimproved dirt ———  
U.S. Route ——— State Route ———

SOUTH CANISTEO, N. Y.  
NE/4 GREENWOOD 15' QUADRANGLE  
42077-B5-TF-024

THIS MAP COMPLIES WITH NATIONAL MAP ACCURACY STANDARDS  
FOR SALE BY U.S. GEOLOGICAL SURVEY  
DENVER, COLORADO 80225, OR RESTON, VIRGINIA 22092  
A FOLDER DESCRIBING TOPOGRAPHIC MAPS AND SYMBOLS IS AVAILABLE ON REQUEST

To place on the predicted North American Datum 1983  
move the projection lines 3 meters south and  
24 meters west as shown by dashed corner ticks

1954  
PHOTOINSPECTED 1976  
DMA 5468 II NE-SERIES V821

USGS NHD HISTORICAL MAP  
SEP 22 1988  
REC'D FILE COPY