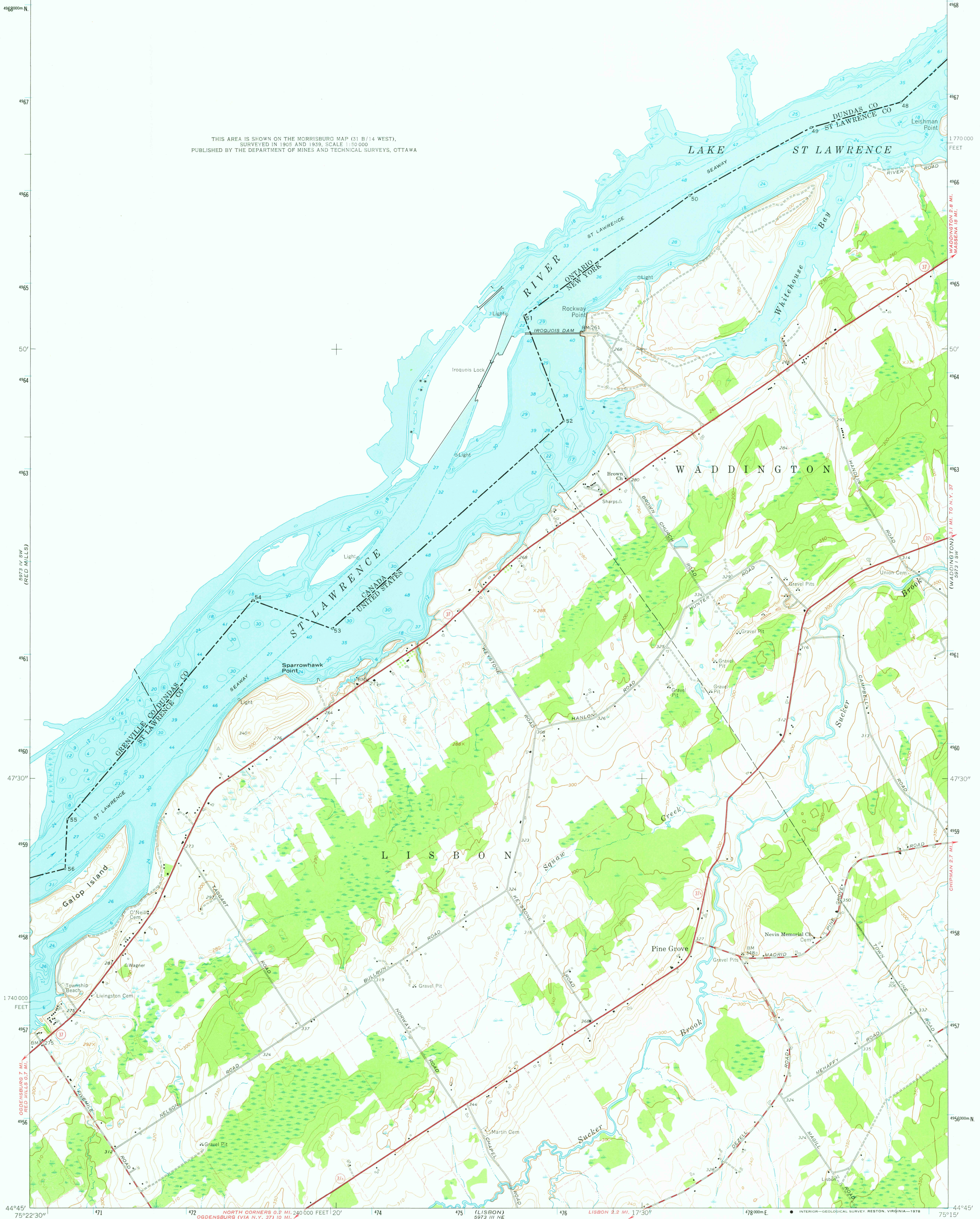


75°22'30" 44°52'30" 471 472 473 474 475 476 17°30' 478 479 260 000 FEET 480 75°15' 44°52'30"

THIS AREA IS SHOWN ON THE MORRISBURG MAP (31 B/14 WEST),
SURVEYED IN 1905 AND 1939, SCALE 1:50 000
PUBLISHED BY THE DEPARTMENT OF MINES AND TECHNICAL SURVEYS, OTTAWA



Mapped, edited, and published by the Geological Survey

Control by USGS, USC&GS, USCE, U.S. Lake Survey, and International Boundary Commission

Topography by photogrammetric methods from aerial photographs taken 1960. Field checked 1963

Selected hydrographic data compiled from U. S. Lake Survey Chart 13 (1962). This information is not intended for navigational purposes

Polyconic projection. 1927 North American datum 10,000-foot grid based on New York coordinate system, east zone 1000-meter Universal Transverse Mercator grid ticks, zone 18, shown in blue

Fine red dashed lines indicate selected fence and field lines where generally visible on aerial photographs. This information is unchecked



SCALE 1:24 000

CONTOUR INTERVAL 10 FEET

NATIONAL GEODETIC VERTICAL DATUM OF 1929

DEPTH CURVES AND SOUNDINGS IN FEET—DATUM IS LOW WATER 239.9 FEET ABOVE AND 239.7 FEET BELOW IROQUOIS DAM



ROAD CLASSIFICATION
Heavy-duty ——— Light-duty ———
Medium-duty ——— Unimproved dirt ———
State Route

SPARROWHAWK POINT, N. Y.

N4445—W7515/7.5

1963

AMS 5973 IV SE—SERIES V821

JUL 26 1978

2450