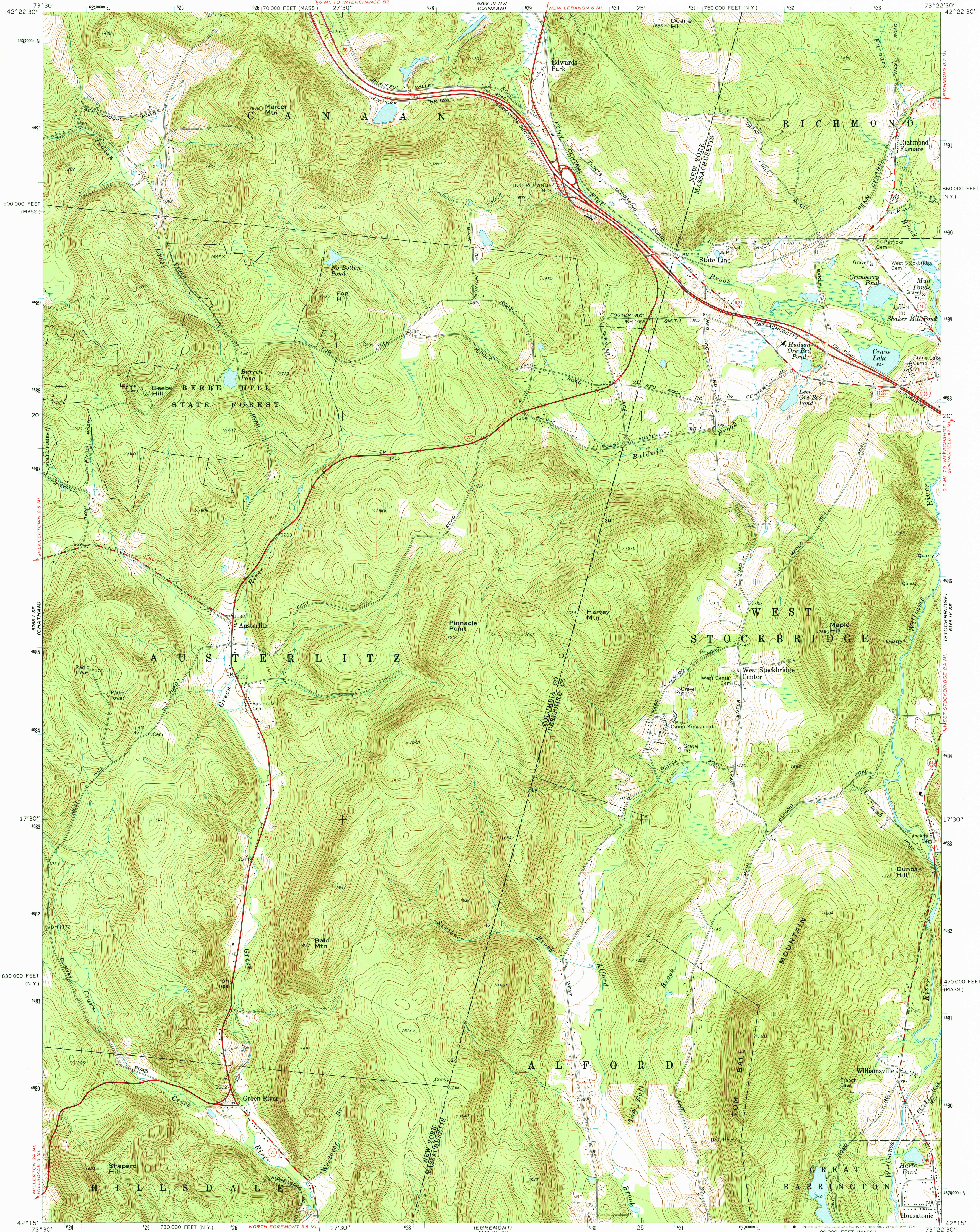
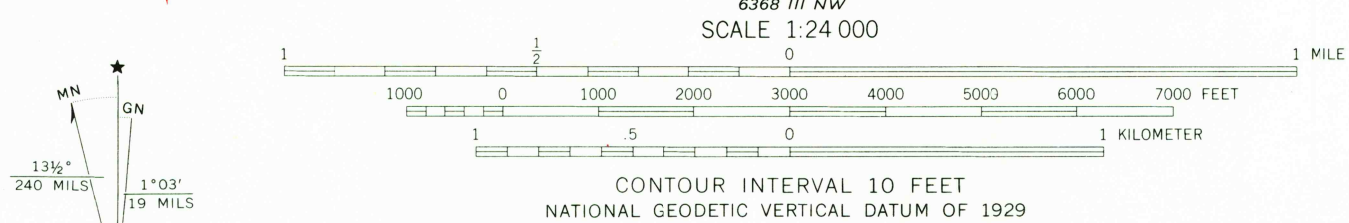


UNITED STATES
DEPARTMENT OF THE INTERIOR
GEOLOGICAL SURVEY

STATE LINE QUADRANGLE
NEW YORK—MASSACHUSETTS
7.5 MINUTE SERIES (TOPOGRAPHIC)



Mapped, edited, and published by the Geological Survey
In cooperation with Massachusetts Department of Public Works
Control by USGS, USC&GS, and Massachusetts Harbor and Land Commission
Topography by photogrammetric methods from aerial photographs
taken 1942 and planetable surveys 1944. Revised from aerial photographs
taken 1971. Field checked 1973
Polyconic projection. 1927 North American datum
10,000-foot grids based on New York coordinate system, east zone,
and Massachusetts coordinate system, mainland zone
1000-meter Universal Transverse Mercator grid ticks, zone 18,
shown in blue
Fine red dashed lines indicate selected fence and field lines where
generally visible on aerial photographs. This information is unchecked



ROAD CLASSIFICATION

Primary highway, hard surface	Light-duty road, hard or improved surface
Secondary highway, hard surface	Unimproved road
Interstate Route	U.S. Route
	State Route

STATE LINE, N. Y.—MASS.
N4215—W7322.5/7.5

USGS
Historical File
Topographic Division

1973
AMS 6368 IV SW—SERIES V821

NOV 20 1974