

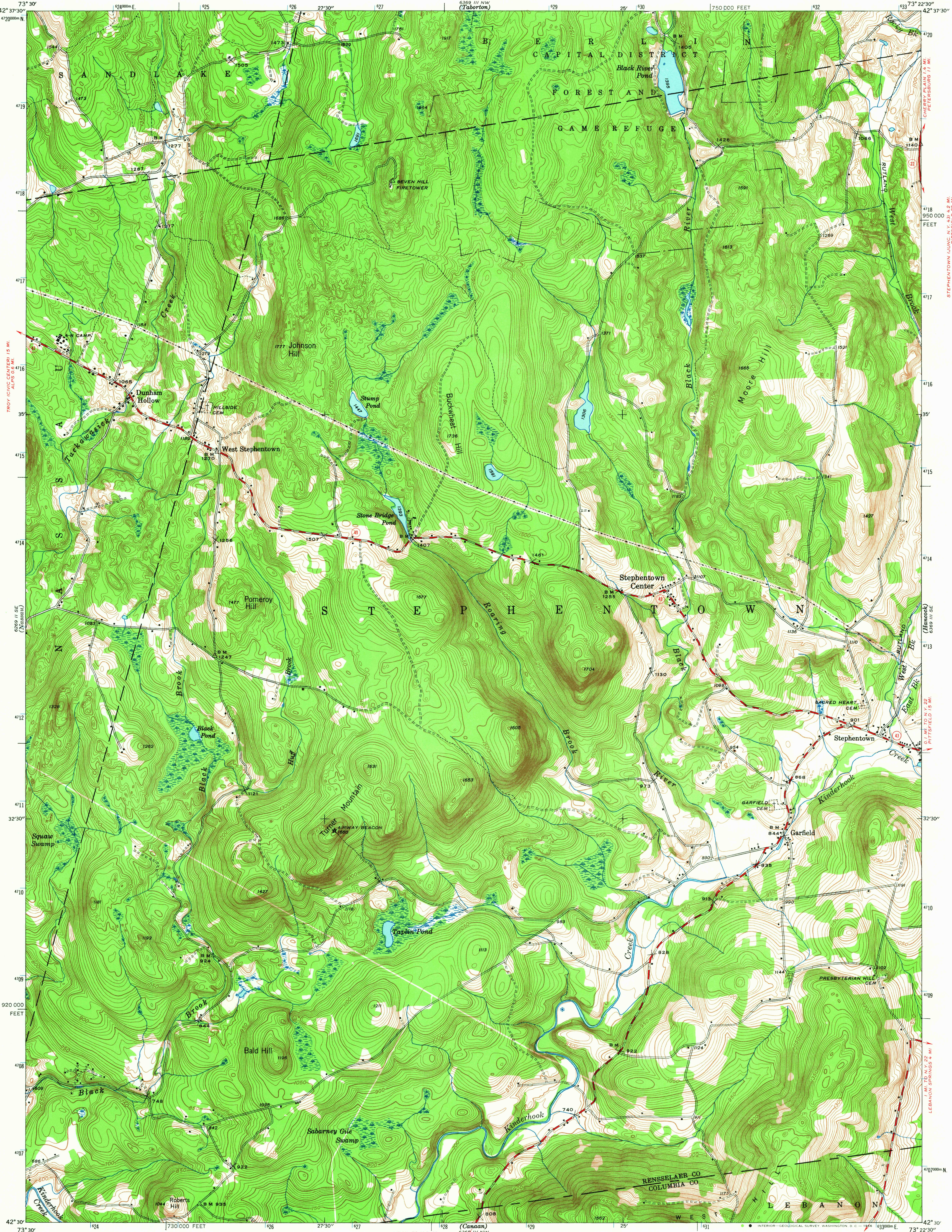
6669 11 NE  
(Avery's Park)

UNITED STATES  
DEPARTMENT OF THE INTERIOR  
GEOLOGICAL SURVEY

UNITED STATES  
DEPARTMENT OF THE ARMY  
CORPS OF ENGINEERS

NEW YORK  
STEPHENTOWN CENTER QUADRANGLE  
7 1/2-MINUTE SERIES

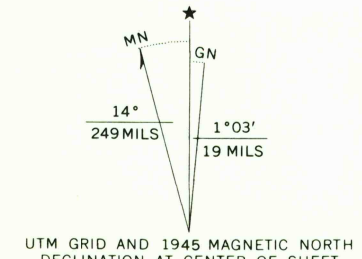
6669 11 NE  
(Barton)



6669 11 SE  
(East Chatham)

Mapped by the Geological Survey  
1945

ROAD CLASSIFICATION  
Heavy-duty ——— Light-duty ———  
Medium-duty ——— Unimproved dirt ———  
○ State Route



SCALE 1:24000  
CONTOUR INTERVAL 10 FEET  
DATUM IS MEAN SEA LEVEL

USGS  
Historical File  
Topographic Division

Polyconic projection. 1927 North American datum  
10,000-foot grid based on New York (East)  
rectangular coordinate system  
1000-meter Universal Transverse Mercator grid ticks,  
zone 18, shown in blue

STEPHENTOWN CENTER, N. Y.  
N 4230-W 7322.5/7.5  
1945  
AMS 6369 III SW-SERIES V821

U.S.G.S.  
TOPOGRAPHIC DIVISION

FOR SALE BY U. S. GEOLOGICAL SURVEY, WASHINGTON, D. C. 20242  
A FOLDER DESCRIBING TOPOGRAPHIC MAPS AND SYMBOLS IS AVAILABLE ON REQUEST

3625  
OCT 14 1965