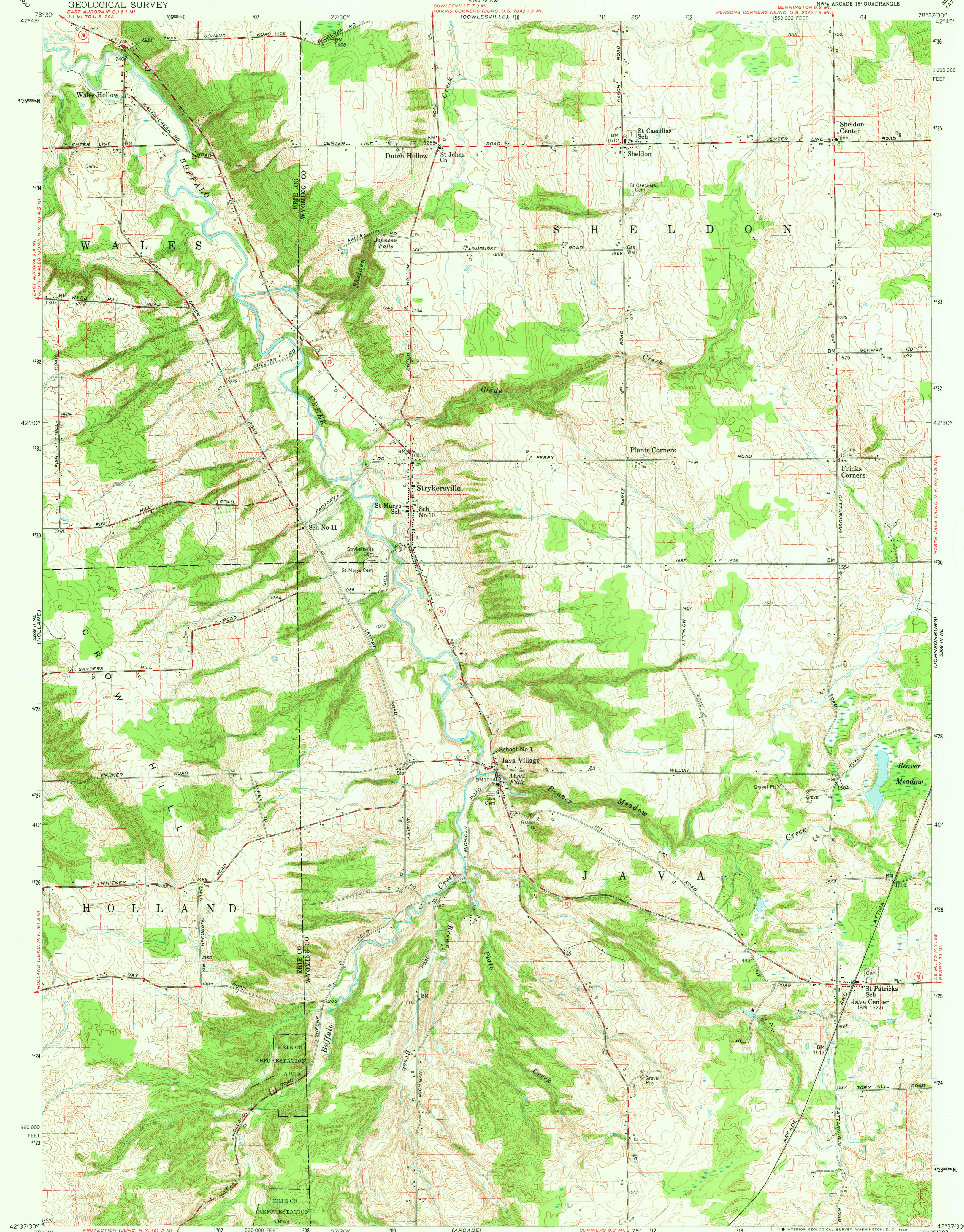


UNITED STATES
DEPARTMENT OF THE INTERIOR
GEOLOGICAL SURVEY

STRYKERSVILLE QUADRANGLE
NEW YORK
7.5 MINUTE SERIES (TOPOGRAPHIC)

5369 IV SE
(ATTICA)



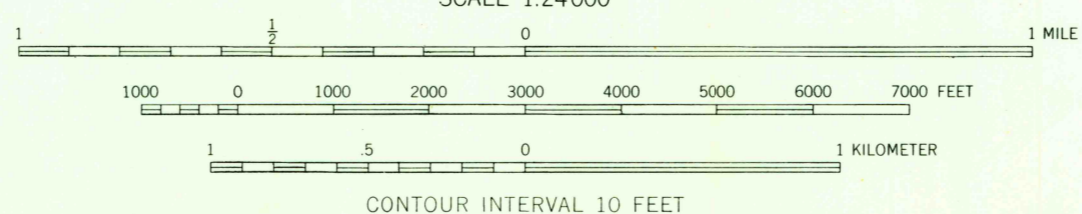
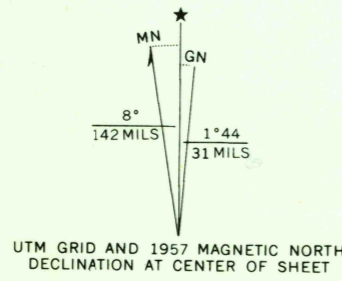
Mapped, edited, and published by the Geological Survey

Control by USGS and USCGS

Topography from aerial photographs by Wild A-5
Aerial photographs taken 1952. Field check 1957

Polycyclic projection. 1927 North American datum
10,000-foot grid based on New York coordinate system, west zone
1000-meter Universal Transverse Mercator grid ticks,
zone 17, shown in blue

Fine red dashed lines indicate selected fence and field lines
visible on aerial photographs. This information is unchecked
Unchecked elevations are shown in brown



THIS MAP COMPLIES WITH NATIONAL MAP ACCURACY STANDARDS
FOR SALE BY U.S. GEOLOGICAL SURVEY, WASHINGTON, D.C. 20242
A FOLDER DESCRIBING TOPOGRAPHIC MAPS AND SYMBOLS IS AVAILABLE ON REQUEST

USGS
Historical File
Topographic Division



U.S.G.S.
FILE COPY
TOPOGRAPHIC DIVISION

ROAD CLASSIFICATION
Medium-duty ——— Light-duty ———
Unimproved dirt ———
State Route

STRYKERSVILLE, N. Y.

NW 1/4 ARCADE 15' QUADRANGLE
N4237.5-W7822.5/7.5

1957

AMS 5369 III NW-SERIES V821

2650
JUL 22 1969