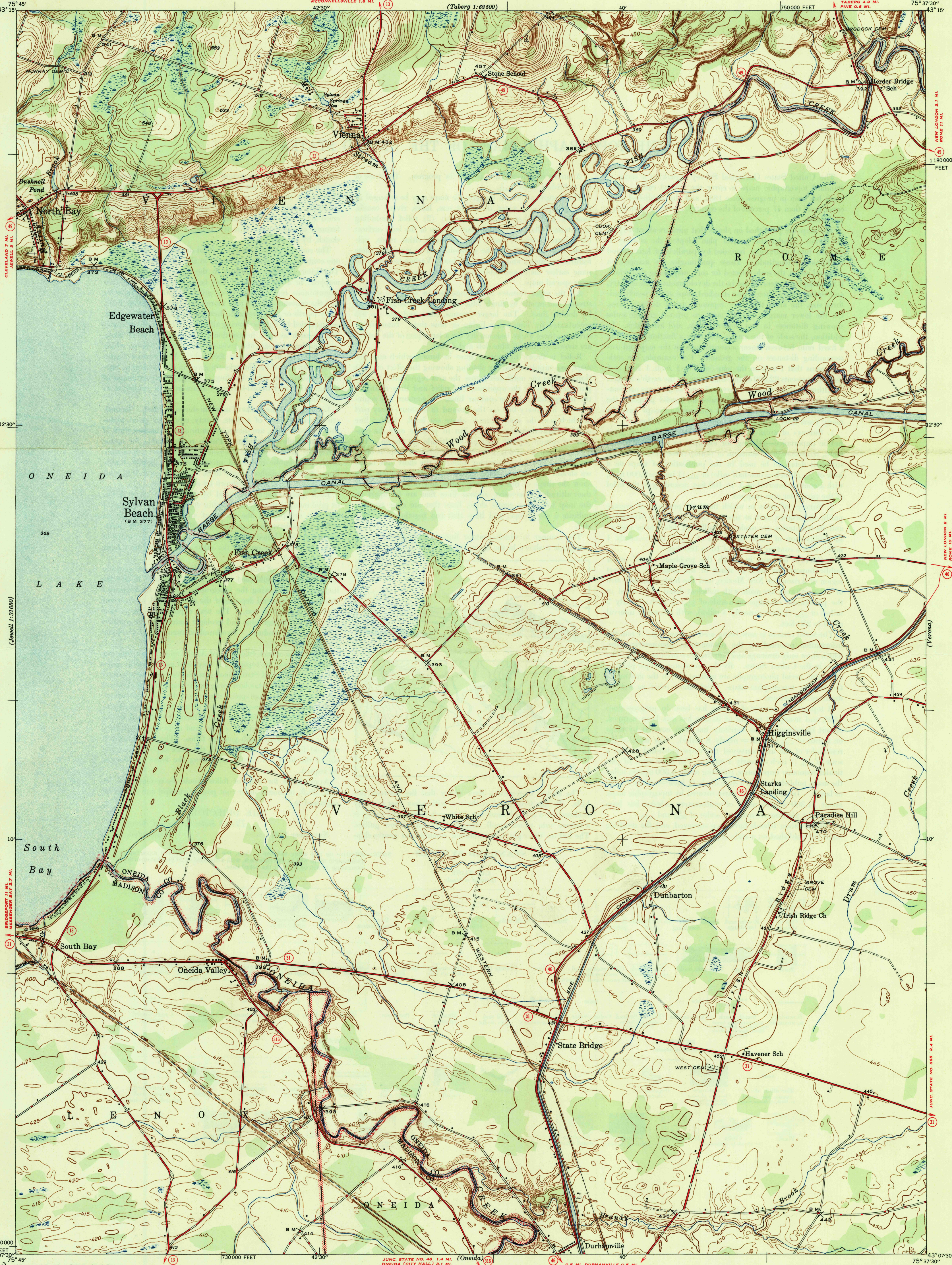


UNITED STATES
DEPARTMENT OF THE INTERIOR
GEOLOGICAL SURVEY

STATE OF NEW YORK
DEPARTMENT OF PUBLIC WORKS
CHAS. H. SELLS, SUPERINTENDENT
B. D. TALLAMY, CHIEF ENGINEER

U. S. G. S.
FILE COPY
Inspection and Editing.

NEW YORK
SYLVAN BEACH QUADRANGLE
7½-MINUTE SERIES



Mapped by the Geological Survey
1945

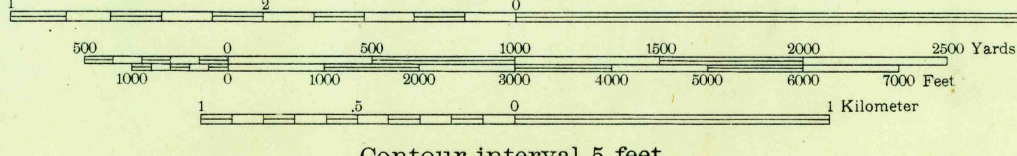
ROAD CLASSIFICATION
1947
Dependable hard-surface
heavy-duty road
Secondary hard-surface
all-weather road
More than two lanes indicated along road with tick at point of change

UNION CORNERS 0.6 MI.
CANASTOTA 3.5 MI.

U. S. Route (25)
State Route (25)
C. & D. R. R. (25)

APPROXIMATE MEAN
DECLINATION, 1946

Scale 1:24000
JUNC. STATE NO. 46 1.4 MI. (Oneida)
ONEIDA (CITY HALL) 3.1 MI.
0.5 MI. DURHAMVILLE 0.5 MI.
2.7 MI. ONEIDA (CITY HALL) 2.7 MI.



Contour interval 5 feet
Datum is mean sea level

USGS
Historical File
Topographic Division

U. S. G. S.
FILE COPY
Inspection and Editing.

Polycyclic projection. 1927 North American datum
10000 foot grid based on New York (Central)
rectangular coordinate system

SYLVAN BEACH, N. Y.
Edition of 1947

N 4307.5 - W 7537.5 / 7.5

OCT 27 1947

3245