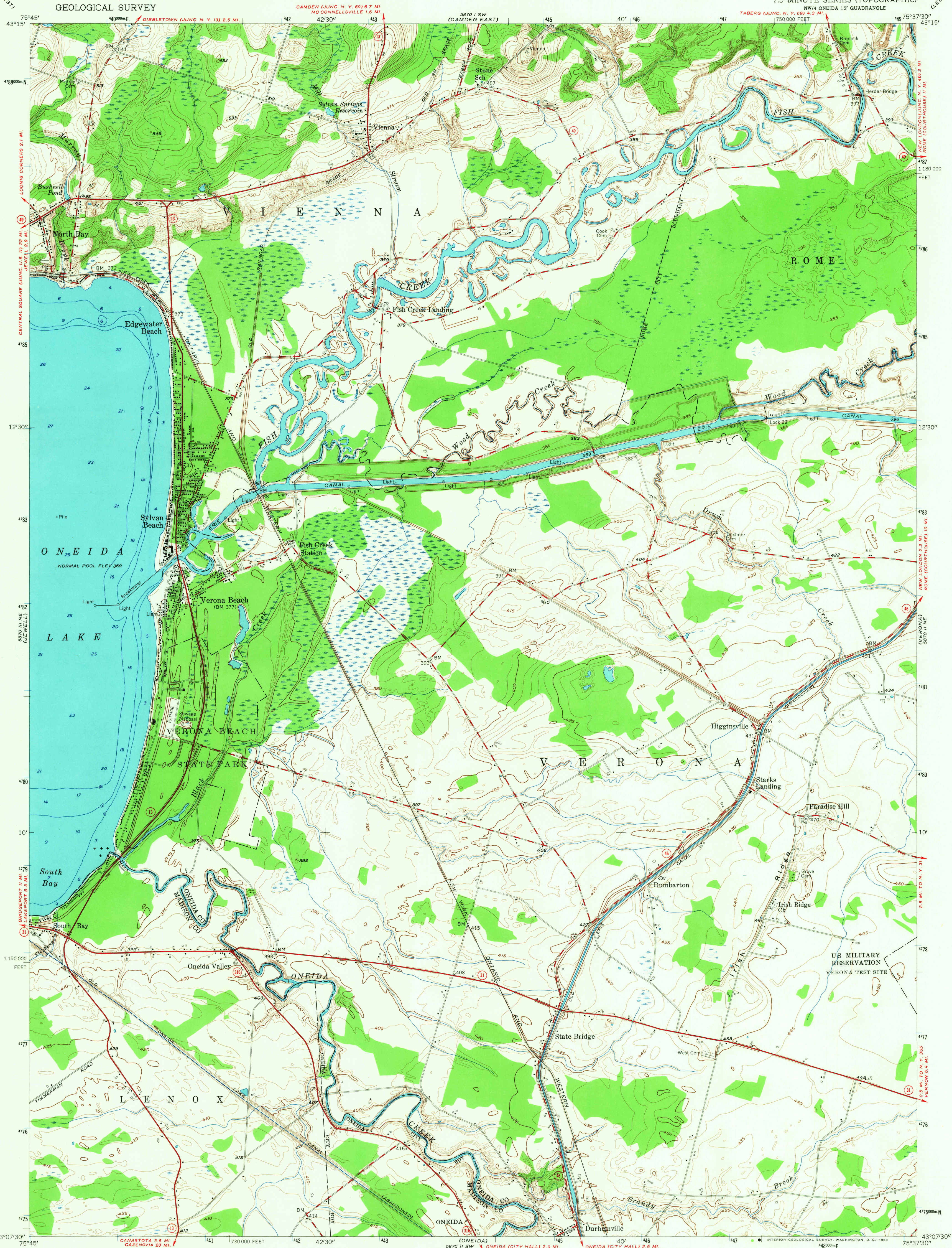
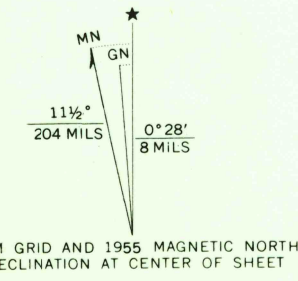


UNITED STATES  
DEPARTMENT OF THE INTERIOR  
GEOLOGICAL SURVEY

SYLVAN BEACH QUADRANGLE  
NEW YORK  
7.5 MINUTE SERIES (TOPOGRAPHIC)



Mapped, edited, and published by the Geological Survey  
Control by USGS and USC&GS  
Culture and drainage in part compiled from aerial photographs  
taken 1941. Topography by planetable surveys 1945. Revised 1955  
Hydrography compiled from U. S. Lake Survey chart 184 (1956)  
Polyconic projection. 1927 North American datum  
10,000-foot grid based on New York coordinate system,  
central zone  
1000-meter Universal Transverse Mercator grid ticks,  
zone 18, shown in blue



CONTOUR INTERVAL 5 FEET  
DATUM IS MEAN SEA LEVEL  
DEPTH CURVES AND SOUNDINGS IN FEET—DATUM IS NORMAL POOL ELEVATION 369 FEET

THIS MAP COMPLIES WITH NATIONAL MAP ACCURACY STANDARDS  
FOR SALE BY U. S. GEOLOGICAL SURVEY, WASHINGTON, D. C. 20242  
A FOLDER DESCRIBING TOPOGRAPHIC MAPS AND SYMBOLS IS AVAILABLE ON REQUEST

USGS  
Historical File  
Topographic Division



U.S.G.S.  
FILE COPY  
TOPOGRAPHIC DIVISION

SYLVAN BEACH, N. Y.  
NW 1/4 ONEIDA 15' QUADRANGLE  
N 4307.5—W 7537.5 17.5  
1955  
AMS 5870 II NW—SERIES V821

3740  
SEP 20 1968