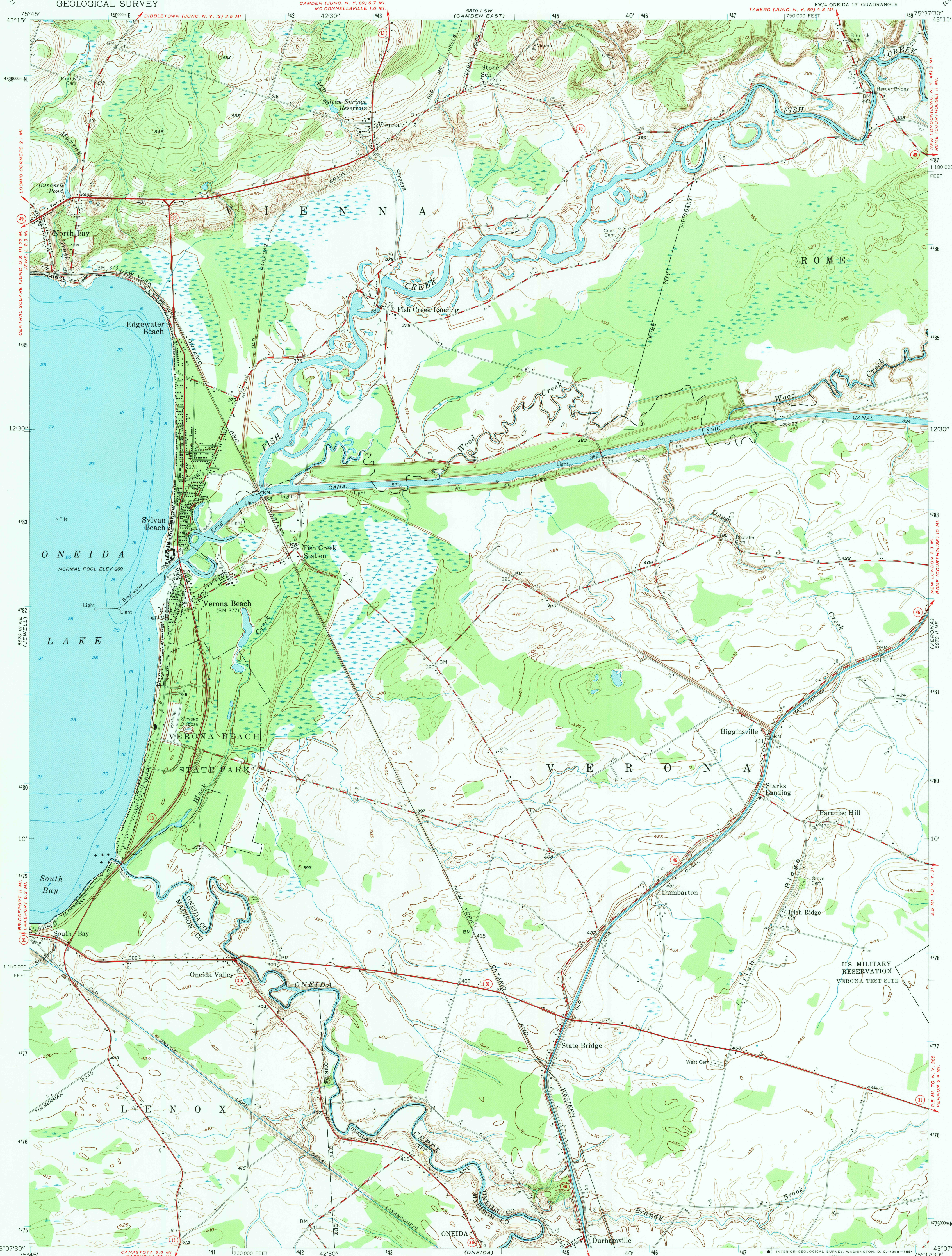


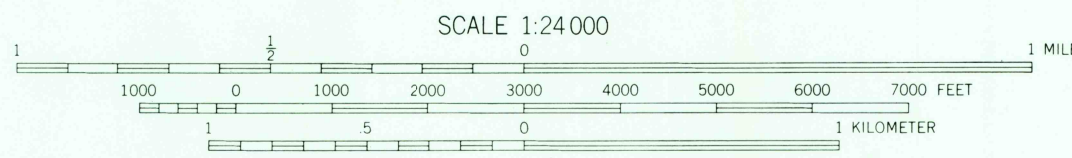
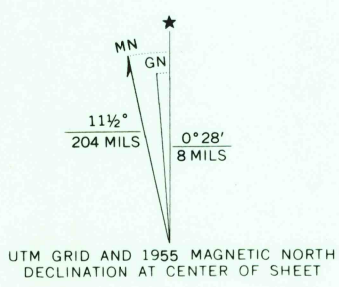
UNITED STATES
DEPARTMENT OF THE INTERIOR
GEOLOGICAL SURVEY

SYLVAN BEACH QUADRANGLE
NEW YORK
7.5 MINUTE SERIES (TOPOGRAPHIC)

NW/4 ONEIDA 15' QUADRANGLE
75°37'30" W 43°07'30" N



Mapped, edited, and published by the Geological Survey
Control by USGS and USC&GS
Culture and drainage in part compiled from aerial photographs
taken 1941. Topography by planetable surveys 1945. Revised 1955
Hydrography compiled from U. S. Lake Survey chart 184 (1956)
Polyconic projection, 1927 North American datum
10,000-foot grid based on New York coordinate system,
central zone
1000-meter Universal Transverse Mercator grid ticks,
zone 18, shown in blue



THIS MAP COMPLIES WITH NATIONAL MAP ACCURACY STANDARDS
FOR SALE BY U. S. GEOLOGICAL SURVEY, WASHINGTON, D. C. 20242
A FOLDER DESCRIBING TOPOGRAPHIC MAPS AND SYMBOLS IS AVAILABLE ON REQUEST



ROAD CLASSIFICATION
Heavy-duty ——— Light-duty ———
Medium-duty ——— Unimproved dirt ———
○ State Route

SYLVAN BEACH, N. Y.
NW/4 ONEIDA 15' QUADRANGLE
N 4307.5—W 7537.5/7.5

1955

AMS 5870 II NW—SERIES V821

7-18-84
RETURN TO:
U.S. GEOLOGICAL SURVEY
WASHINGTON, D.C. 20242