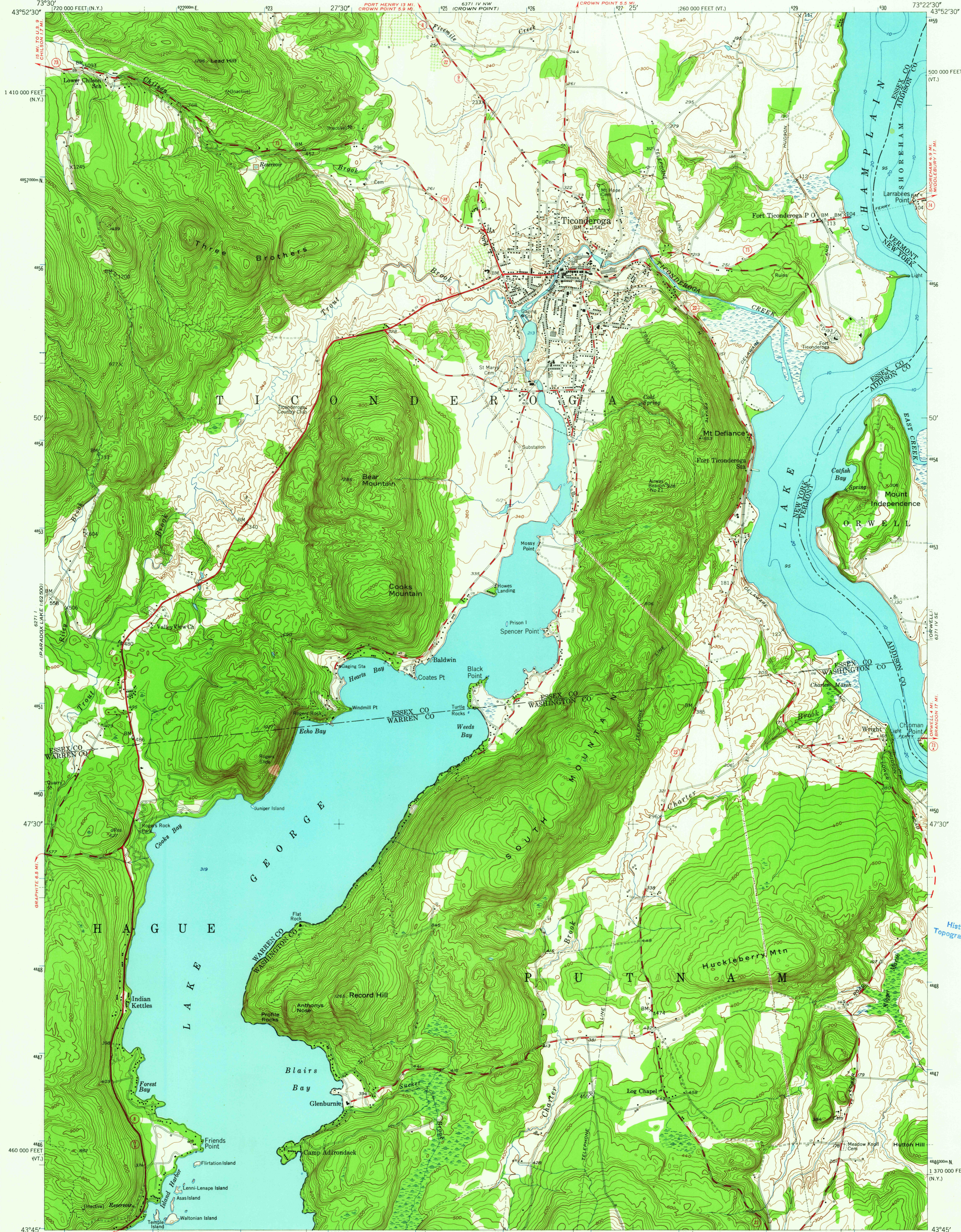
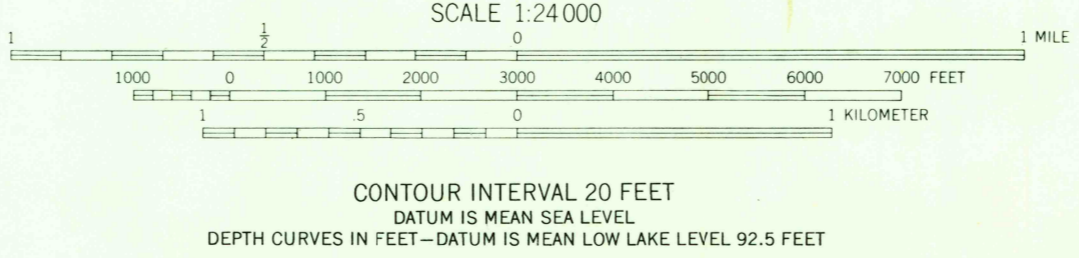
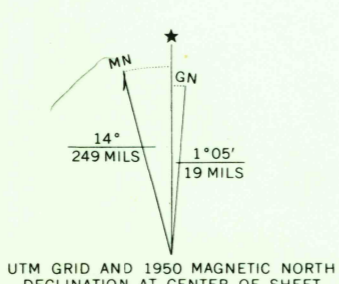


UNITED STATES
DEPARTMENT OF THE INTERIOR
GEOLOGICAL SURVEY

TICONDEROGA QUADRANGLE
NEW YORK-VERMONT
7.5 MINUTE SERIES (TOPOGRAPHIC)
SW 4 TICONDEROGA 15' QUADRANGLE



Mapped, edited, and published by the Geological Survey
Control by USGS and USC&GS
Topography from aerial photographs by multiplex methods
Aerial photographs taken 1942. Field check 1949-1950
Polyconic projection. 1927 North American datum
10,000-foot grids based on New York Coordinate system,
east zone, and Vermont coordinate system
1000-meter Universal Transverse Mercator grid ticks,
zone 18, shown in blue



ROAD CLASSIFICATION
Heavy-duty ——— Light-duty ———
Medium-duty ——— Unimproved dirt ———
State Route —○—



TICONDEROGA, N.Y.-VT.
SW 4 TICONDEROGA 15' QUADRANGLE
N4345-W7322.5/7.5

1950
AMS 6371 IV SW-SERIES V821

THIS MAP COMPLIES WITH NATIONAL MAP ACCURACY STANDARDS
FOR SALE BY U. S. GEOLOGICAL SURVEY, WASHINGTON, D. C. 20242
A FOLDER DESCRIBING TOPOGRAPHIC MAPS AND SYMBOLS IS AVAILABLE ON REQUEST
THIS MAP IS AVAILABLE WITH OR WITHOUT SHADED RELIEF OVERPRINT

USGS
Historical File
Topographic Division

16295
FEB 16 1960