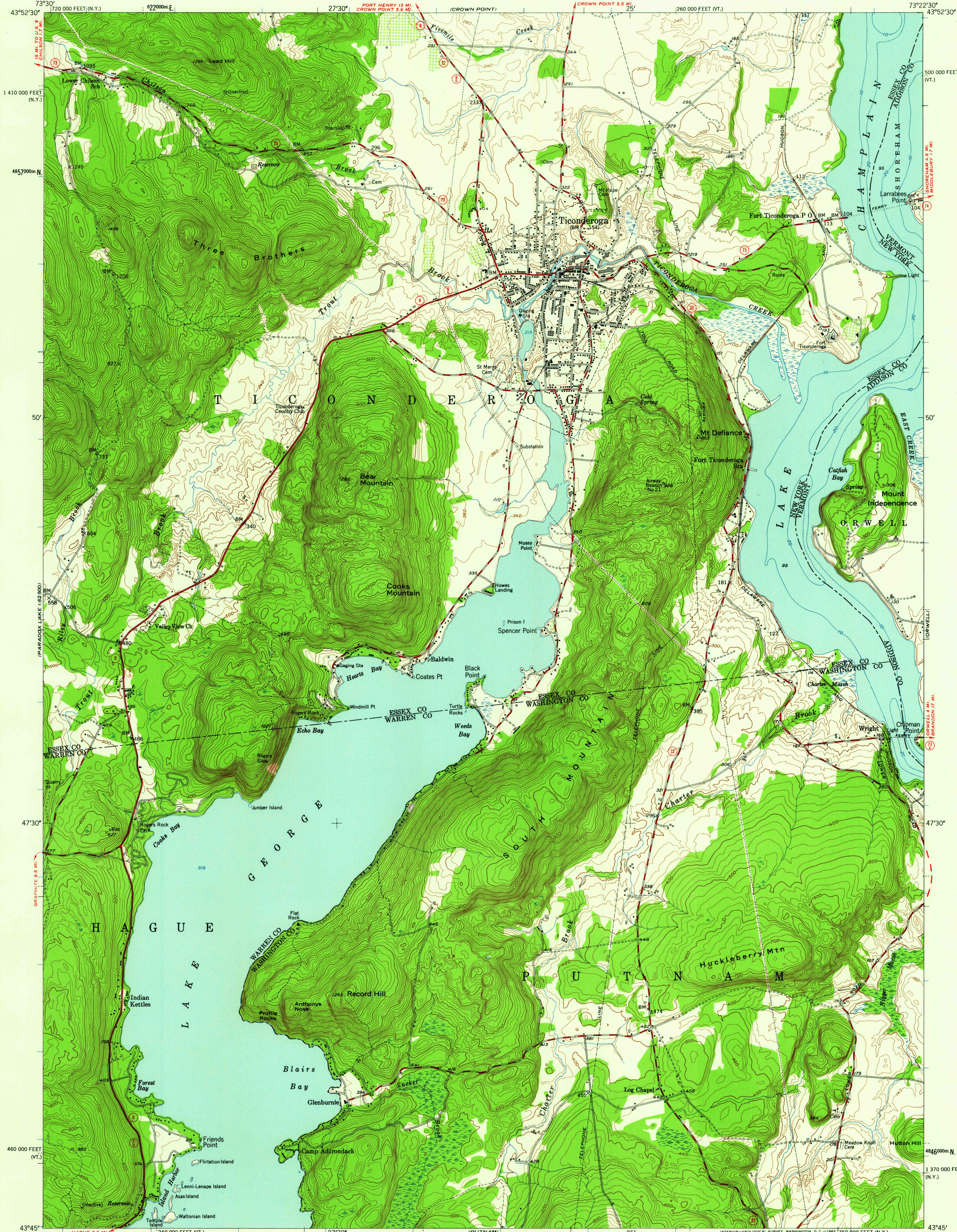
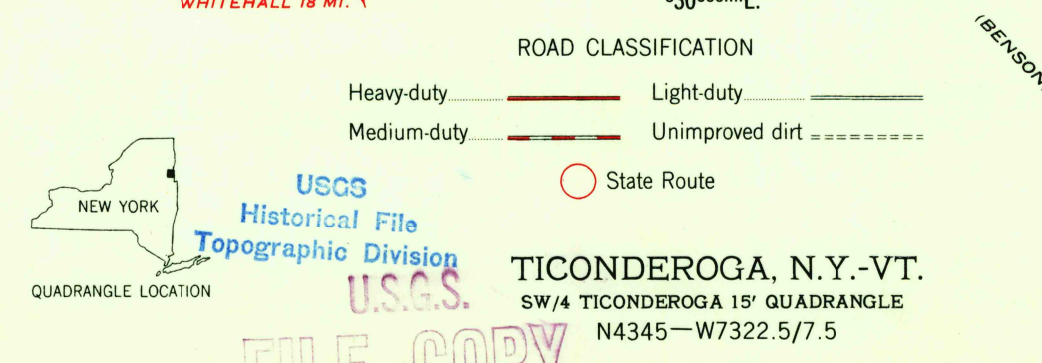
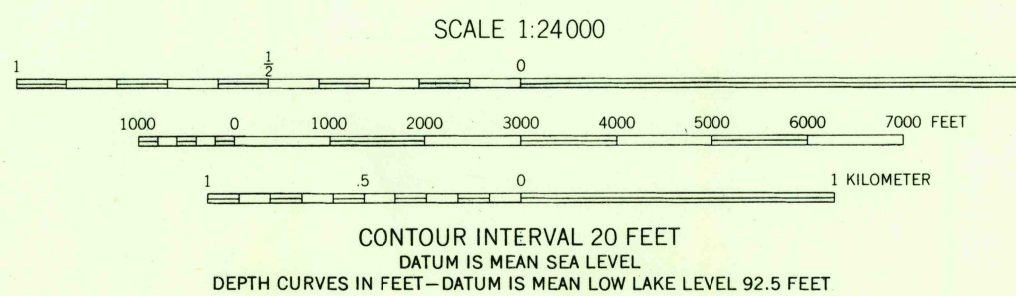
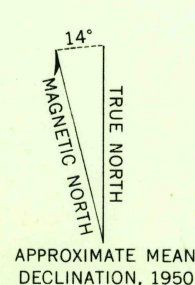


UNITED STATES  
DEPARTMENT OF THE INTERIOR  
GEOLOGICAL SURVEY

TICONDEROGA QUADRANGLE  
NEW YORK-VERMONT  
7.5 MINUTE SERIES (TOPOGRAPHIC)  
SW 1/4 TICONDEROGA 15' QUADRANGLE



Mapped, edited, and published by the Geological Survey  
Control by USGS and USC&GS  
Topography from aerial photographs by multiplex methods  
Aerial photographs taken 1942. Field check 1949-1950  
Polyconic projection. 1927 North American datum  
10,000-foot grids based on New York Coordinate system,  
east zone, and Vermont coordinate system  
1000-meter Universal Transverse Mercator grid ticks  
zone 18, shown in blue



THIS MAP COMPLIES WITH NATIONAL MAP ACCURACY STANDARDS  
FOR SALE BY U. S. GEOLOGICAL SURVEY, WASHINGTON 25, D. C.  
A FOLDER DESCRIBING TOPOGRAPHIC MAPS AND SYMBOLS IS AVAILABLE ON REQUEST  
THIS MAP AVAILABLE WITH OR WITHOUT SHADED RELIEF OVERPRINT

FILE COPY  
TOPOGRAPHIC DIVISION

1950

MAR 26 1952

5965