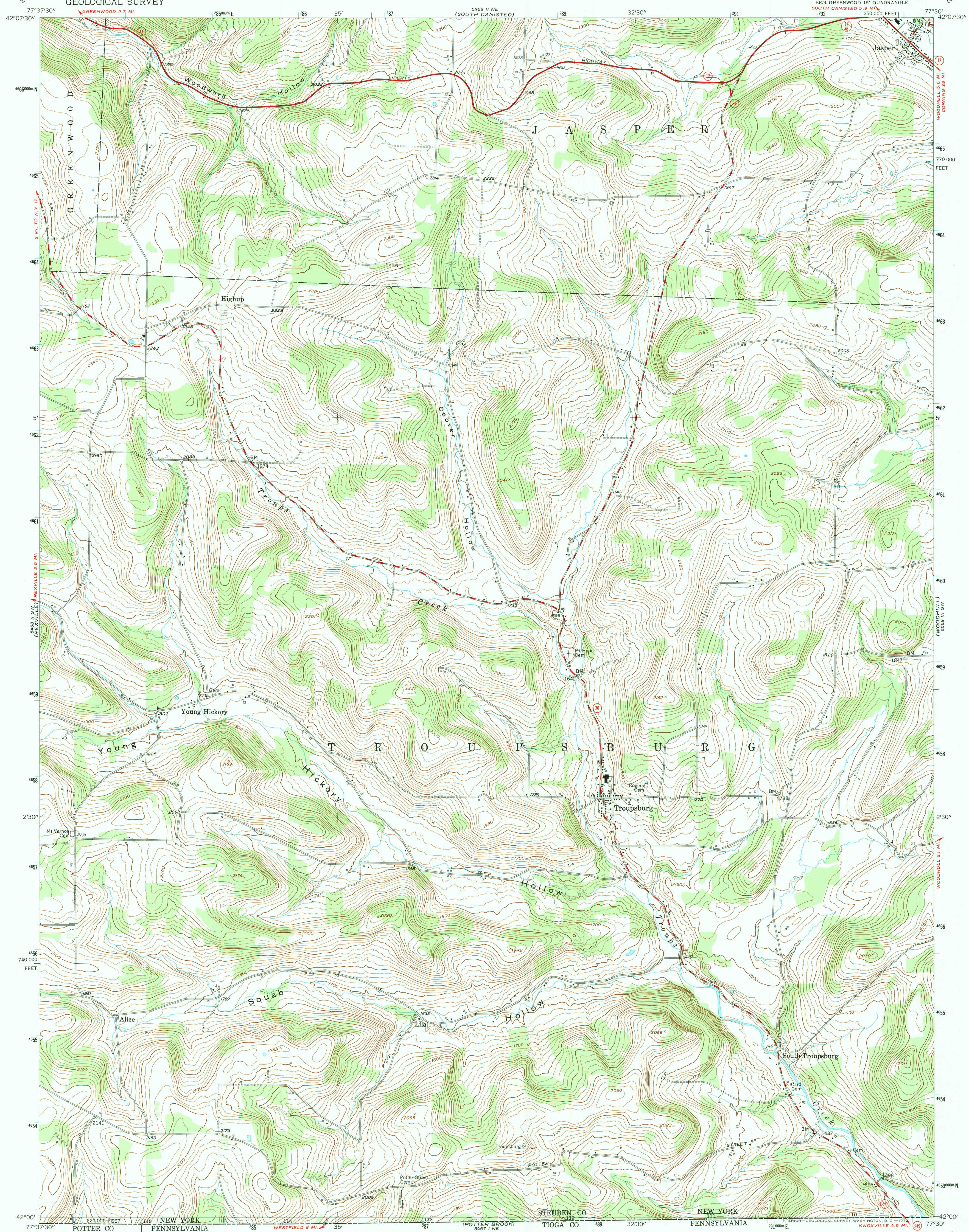


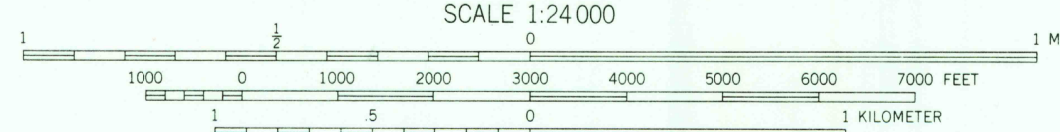
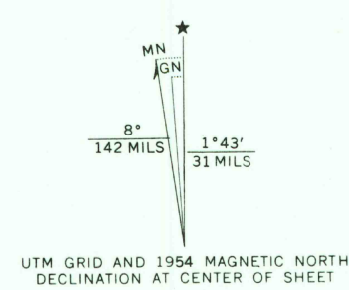
UNITED STATES
DEPARTMENT OF THE INTERIOR
GEOLOGICAL SURVEY

TROUPSBURG QUADRANGLE
NEW YORK
7.5 MINUTE SERIES (TOPOGRAPHIC)

SE/4 GREENWOOD 18' QUADRANGLE
SOUTH CANISTEO 5.9 MI



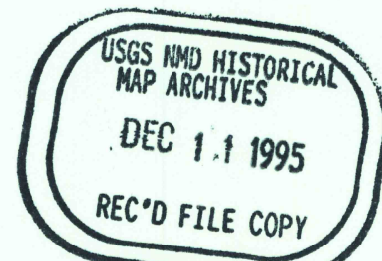
Mapped, edited, and published by the Geological Survey
Control by USGS and USC&GS
Topography from aerial photographs by stereophotogrammetric
methods. Aerial photographs taken 1952. Field check 1954
Polyconic projection. 1927 North American datum
10,000-foot grid based on New York coordinate system,
central zone
Unchecked elevations are shown in brown
1000-meter Universal Transverse Mercator grid ticks,
zone 18, shown in blue



CONTOUR INTERVAL 20 FEET
DATUM IS MEAN SEA LEVEL

THIS MAP COMPLIES WITH NATIONAL MAP ACCURACY STANDARDS
FOR SALE BY U. S. GEOLOGICAL SURVEY, WASHINGTON, D. C. 20242
A FOLDER DESCRIBING TOPOGRAPHIC MAPS AND SYMBOLS IS AVAILABLE ON REQUEST

ROAD CLASSIFICATION
Heavy-duty ——— Light-duty ———
Medium-duty ——— Unimproved dirt ———
U. S. Route ——— State Route ———



TROUPSBURG, N. Y.
SE/4 GREENWOOD 18' QUADRANGLE
N 4200—W 7730/7.5
1954
AMS 5468 II SE—SERIES V821

