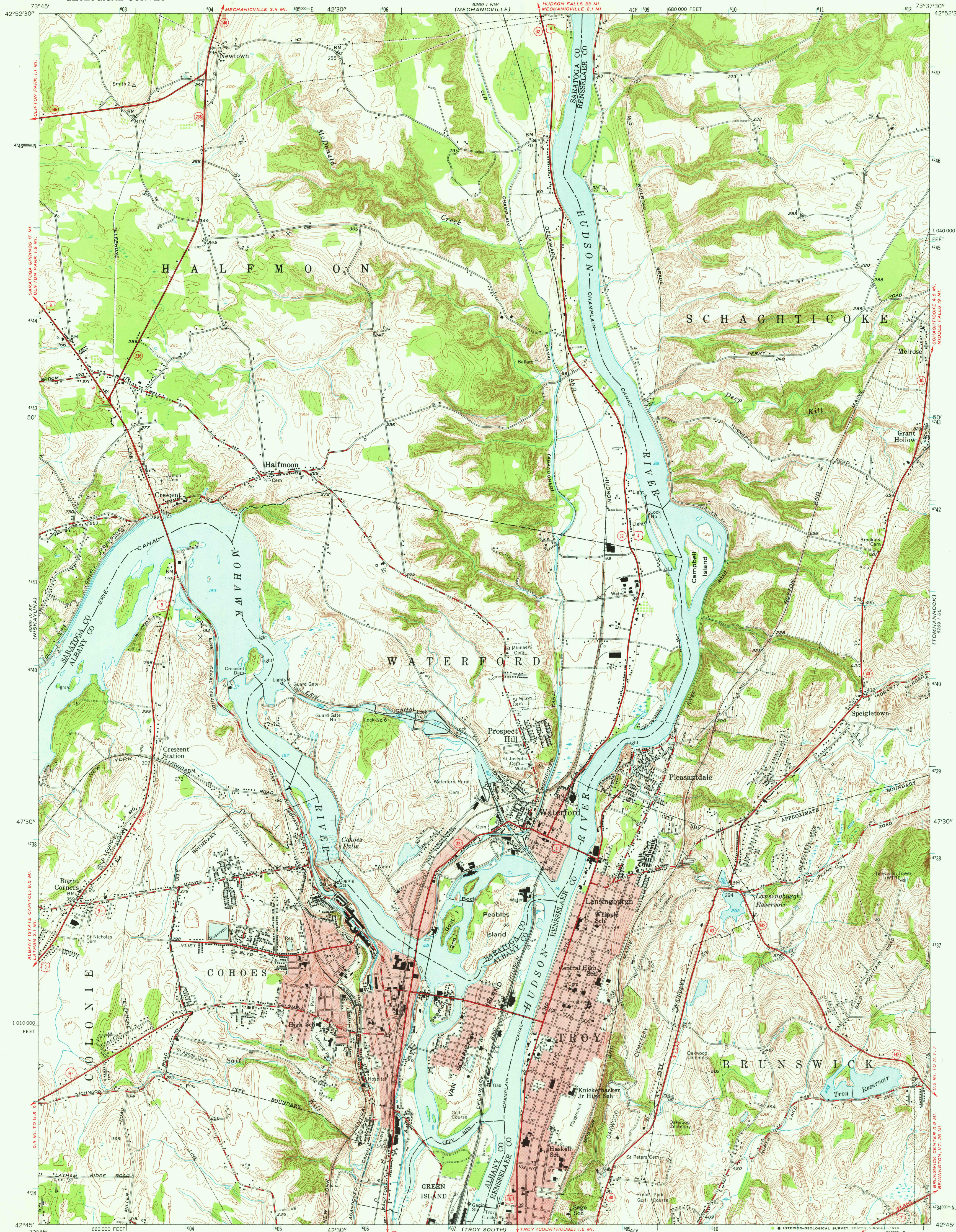


UNITED STATES
DEPARTMENT OF THE INTERIOR
GEOLOGICAL SURVEY

TROY NORTH QUADRANGLE
NEW YORK
7.5 MINUTE SERIES (TOPOGRAPHIC)

589 NE
(SCHAGHTICOKE)



Mapped, edited, and published by the Geological Survey

Control by USGS and USCGS

Topography from aerial photographs by stereophotogrammetric methods. Aerial photographs taken 1952. Field check 1954

Polyconic projection. 1927 North American datum
10,000-foot grid based on New York coordinate system,
east zone

Red tint indicates area in which only landmark buildings
are shown

Unchecked elevations are shown in brown
1000-metre Universal Transverse Mercator grid ticks,
zone 18, shown in blue

UTM GRID AND 1954 MAGNETIC NORTH
DECLINATION AT CENTER OF SHEET

SCALE 1:24000

CONTOUR INTERVAL 10 FEET
NATIONAL GEODETIC VERTICAL DATUM OF 1929

1 KILOMETRE
1 MILE



ROAD CLASSIFICATION
Heavy-duty ——— Light-duty ———
Medium-duty ——— Unimproved dirt ———
U.S. Route State Route

TROY NORTH, N.Y.

N 4245—W 7337.5/7.5

APP 9 3 1976

USGS
Historical File
Topographic Division

1954
AMS 6269 1 SW—SERIES V821

THIS MAP COMPLIES WITH NATIONAL MAP ACCURACY STANDARDS
FOR SALE BY U.S. GEOLOGICAL SURVEY, RESTON, VIRGINIA 22092
A FOLDER DESCRIBING TOPOGRAPHIC MAPS AND SYMBOLS IS AVAILABLE ON REQUEST