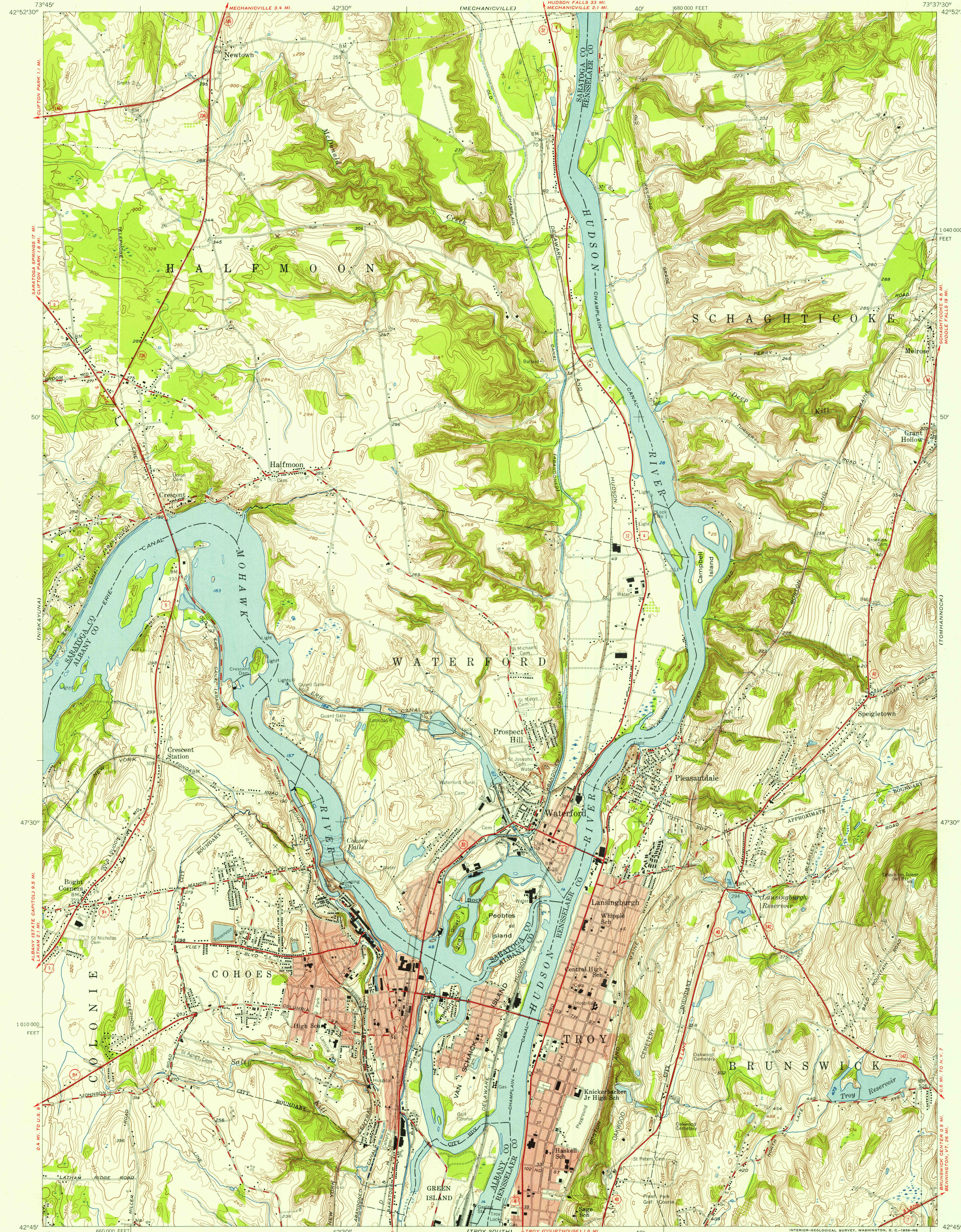
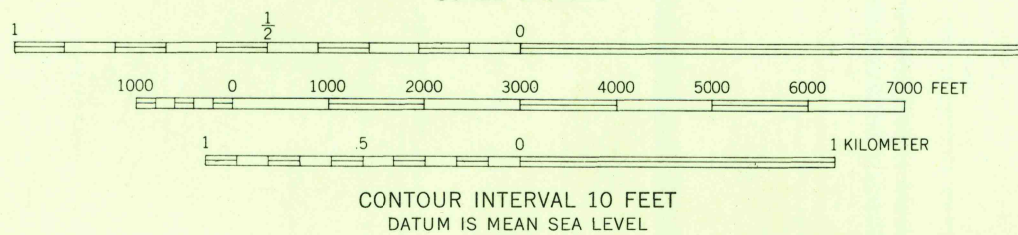


U.S.G.S.  
FILE COPY  
TOPOGRAPHIC DIVISION

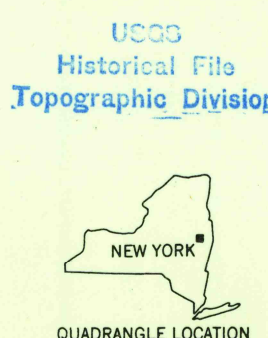


Mapped, edited, and published by the Geological Survey  
Control by USGS and USC&GS  
Topography from aerial photographs by stereophotogrammetric  
methods. Aerial photographs taken 1952. Field check 1954  
Polyconic projection. 1927 North American datum  
10,000-foot grid based on New York coordinate system,  
east zone  
Red tint indicates area in which only landmark buildings  
are shown  
Unchecked elevations are shown in brown

APPROXIMATE MEAN  
DECLINATION, 1954



THIS MAP COMPLIES WITH NATIONAL MAP ACCURACY STANDARDS  
FOR SALE BY U. S. GEOLOGICAL SURVEY, WASHINGTON 25, D. C.  
A FOLDER DESCRIBING TOPOGRAPHIC MAPS AND SYMBOLS IS AVAILABLE ON REQUEST



ROAD CLASSIFICATION  
Heavy-duty ——— Light-duty ———  
Medium-duty ——— Unimproved dirt ———  
U. S. Route ——— State Route ———

TROY NORTH, N. Y.  
SW/4 COHOES 15' QUADRANGLE  
N 4245—W 7337.5/7.5

1954

U.S.G.S.  
FILE COPY  
TOPOGRAPHIC DIVISION

APR 11 1956

4195