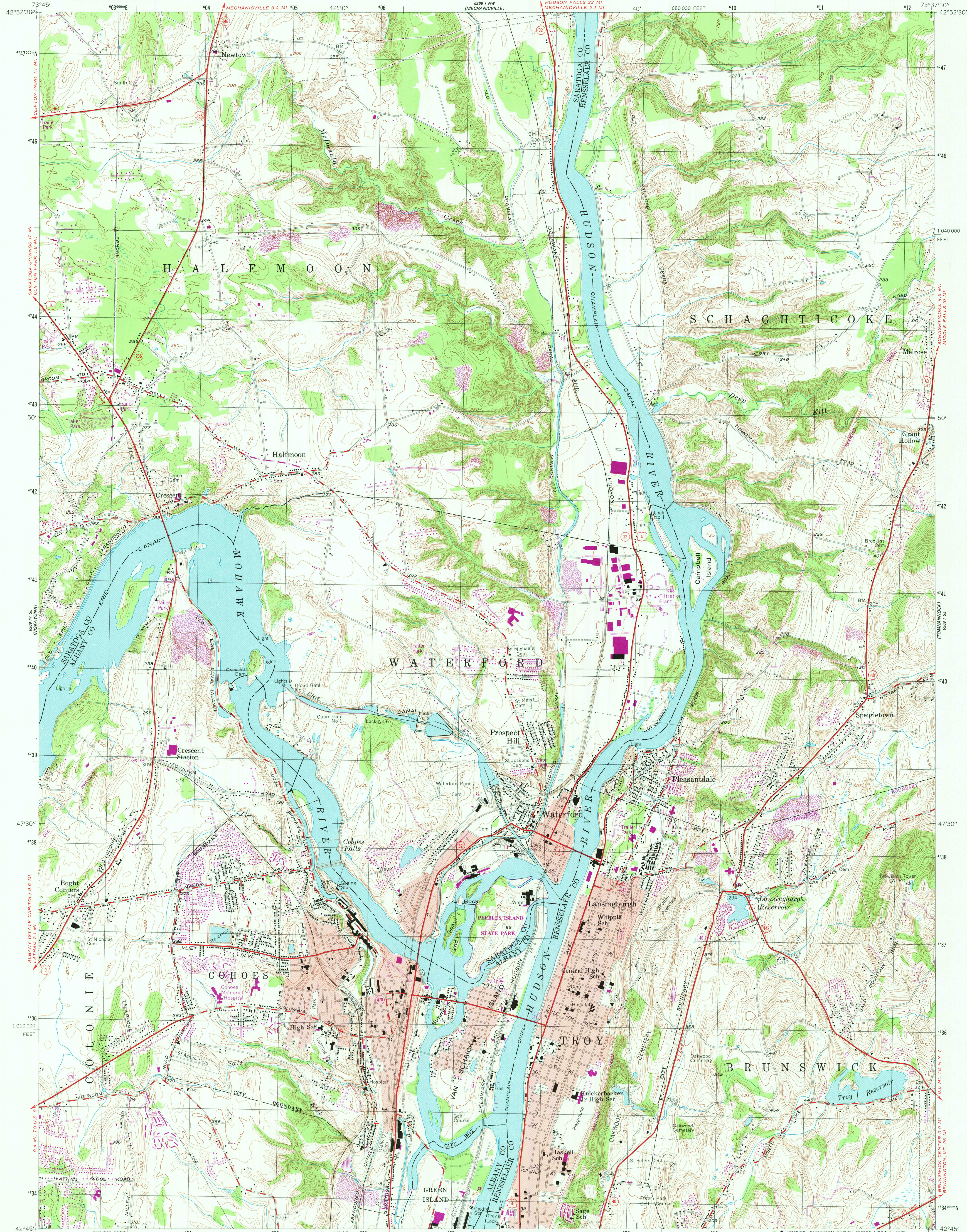
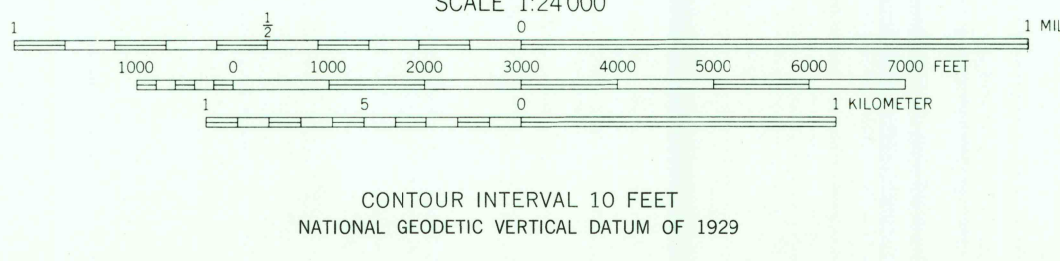
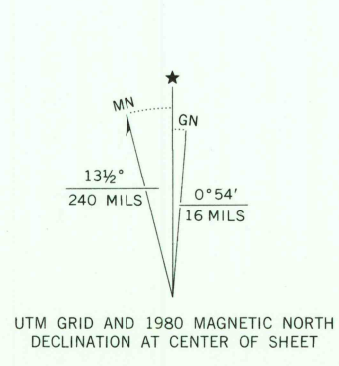


UNITED STATES
DEPARTMENT OF THE INTERIOR
GEOLOGICAL SURVEY

TROY NORTH QUADRANGLE
NEW YORK
7.5 MINUTE SERIES (TOPOGRAPHIC)
SW/4 COHOES 15' QUADRANGLE



Mapped, edited, and published by the Geological Survey
Control by USGS and USC&GS
Topography from aerial photographs by stereophotogrammetric
methods. Aerial photographs taken 1952. Field check 1954
Polyconic projection. 10,000-foot grid based on New York coordinate
system, east zone. 1000-meter Universal Transverse Mercator grid
zone 18. 1927 North American Datum. To place on the predicted
North American Datum 1983 move the projection lines 4 meters south
and 35 meters west as shown by dashed corner ticks
Red tint indicates areas in which only landmark buildings are shown
Revisions shown in purple compiled from aerial photographs
taken 1978 and other source data. This information not
field checked. Map edited 1980



ROAD CLASSIFICATION
Heavy-duty ——— Light-duty ———
Medium-duty ——— Unimproved dirt ———
U. S. Route ——— State Route ———
TROY NORTH, N. Y.
SW/4 COHOES 15' QUADRANGLE
N 4245—W 7337.5/7.5
1954
PHOTOREVISED 1980
DMA 6269 1 SW—SERIES V821

FEB 3 1981
2200