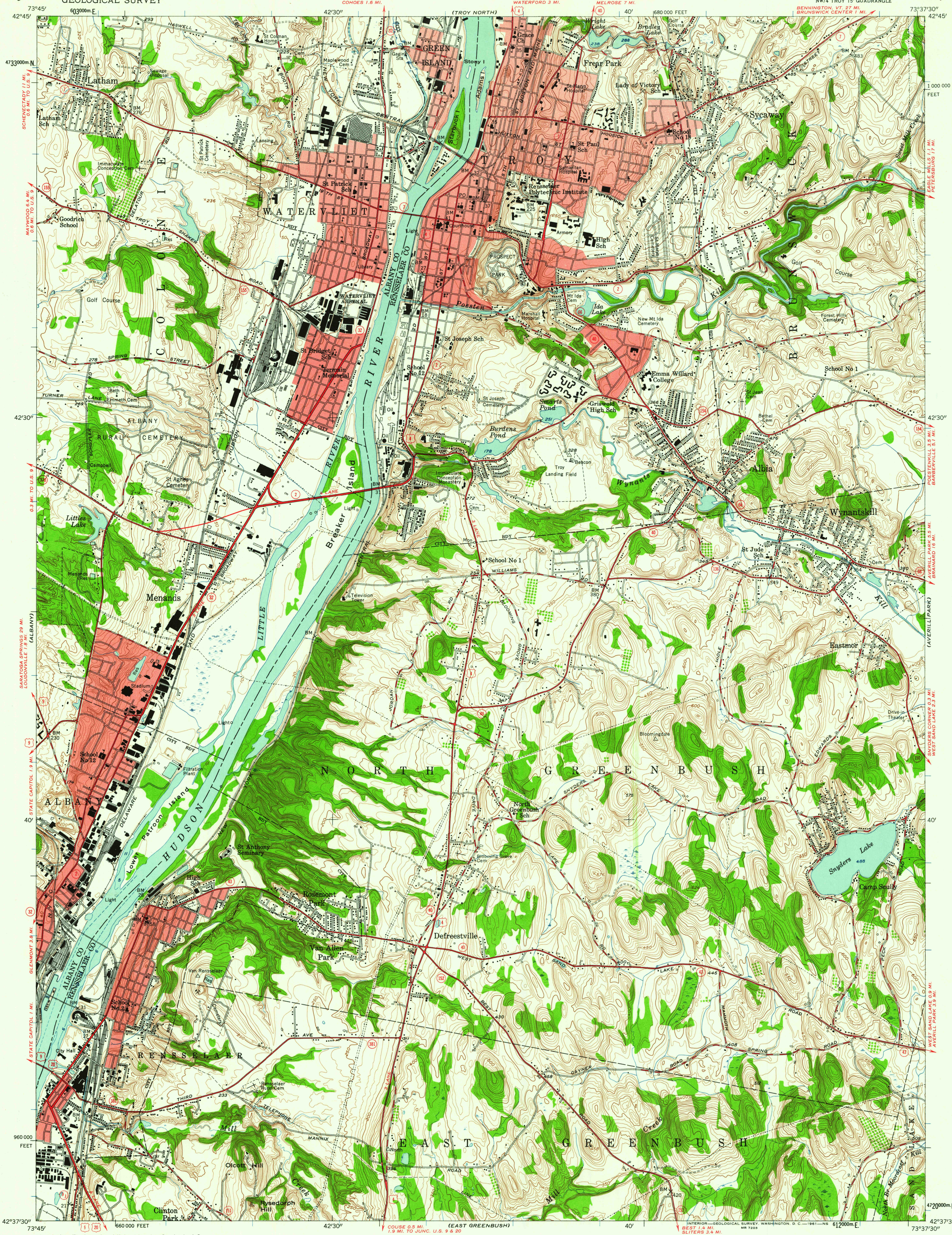


UNITED STATES
DEPARTMENT OF THE INTERIOR
GEOLOGICAL SURVEY

TROY SOUTH QUADRANGLE
NEW YORK
7.5 MINUTE SERIES (TOPOGRAPHIC)
NW 1/4 TROY 15' QUADRANGLE



Mapped, edited, and published by the Geological Survey

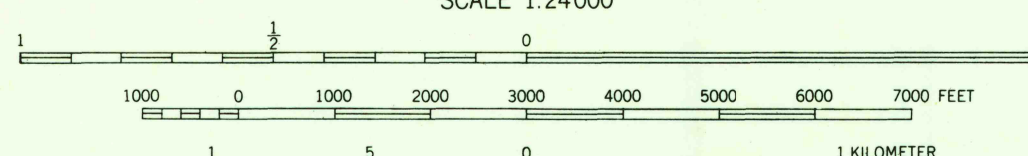
Control by USGS and USC&GS
Topography from aerial photographs by stereophotogrammetric methods. Aerial photographs taken 1952. Field check 1953

Hydrography from USC&GS chart 284, dated 1942

Polyconic projection. 1927 North American datum
10,000-foot grid based on New York coordinate system,
east zone

Red tint indicates areas in which only
landmark buildings are shown
Unchecked elevations are shown in brown

1000-meter Universal Transverse Mercator grid ticks,
zone 18, shown in blue



CONTOUR INTERVAL 10 FEET

DATUM IS MEAN SEA LEVEL

DEPTH CURVES AND SOUNDINGS IN FEET—DATUM IS MEAN LOW WATER

SHORELINE SHOWN REPRESENTS THE APPROXIMATE LINE OF MEAN HIGH WATER

THE MEAN RANGE OF TIDE IS 4.7 FEET

THIS MAP COMPLIES WITH NATIONAL MAP ACCURACY STANDARDS
FOR SALE BY U. S. GEOLOGICAL SURVEY, WASHINGTON 25, D. C.
A FOLDER DESCRIBING TOPOGRAPHIC MAPS AND SYMBOLS IS AVAILABLE ON REQUEST

USGS
Historical File
Topographic Division



ROAD CLASSIFICATION
Heavy-duty ——— Light-duty ———
Medium-duty ——— Unimproved dirt ———
U. S. Route ——— State Route ———

TROY SOUTH, N. Y.
NW 1/4 TROY 15' QUADRANGLE
N 4237.5—W 7337.5/7.5

1953

U.S.G.S.
FILE COPY
TOPOGRAPHIC DIVISION

DEC 5 1951

6000