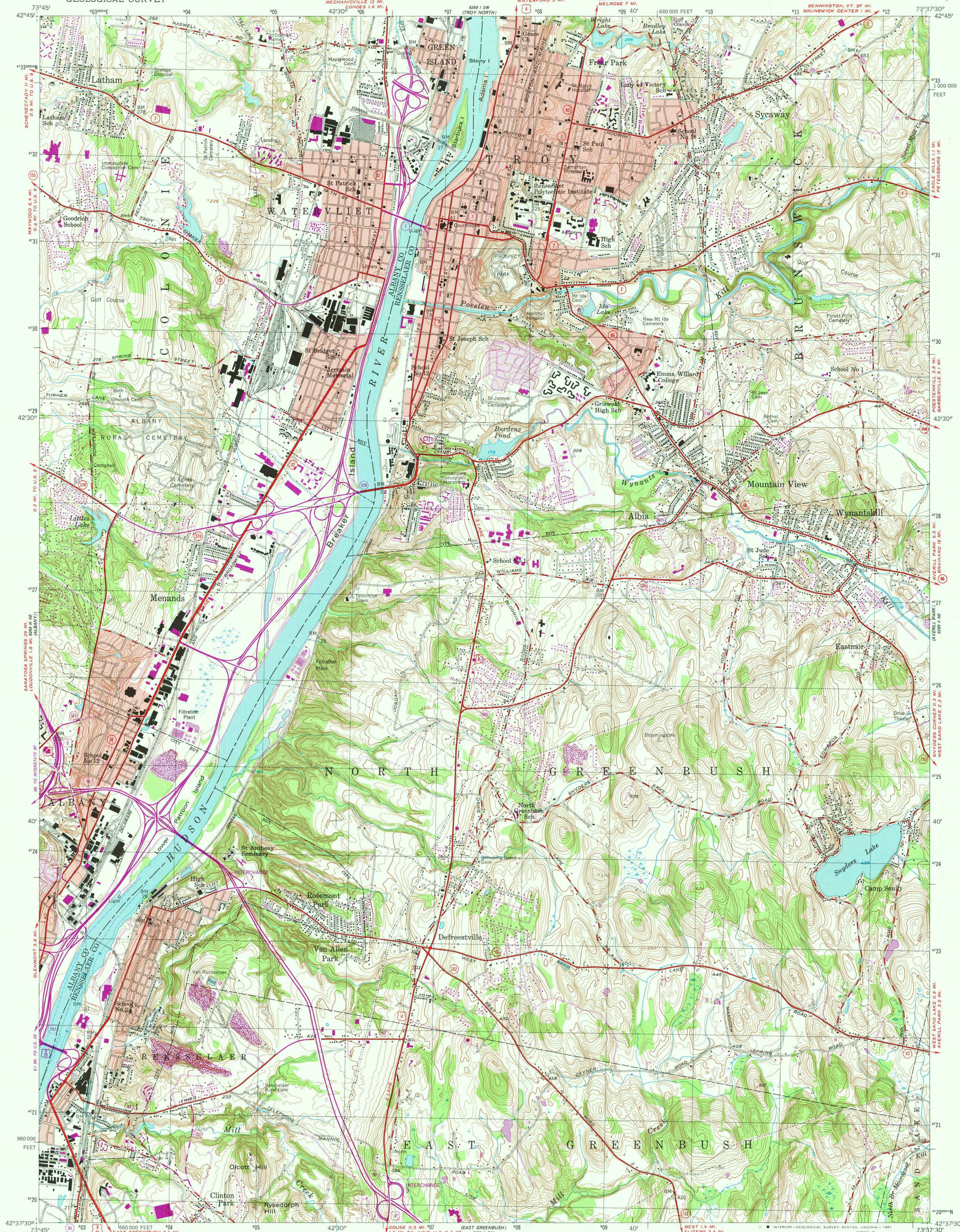


UNITED STATES
DEPARTMENT OF THE INTERIOR
GEOLOGICAL SURVEY

TROY SOUTH QUADRANGLE
NEW YORK
7.5 MINUTE SERIES (TOPOGRAPHIC)



Maped, edited, and published by the Geological Survey
Control by USGS and NOS/NOAA
Topography by photogrammetric methods from aerial photographs
taken 1952. Field checked 1953.
Hydrography from NOS chart 284, dated 1942.
This information is not intended for navigational purposes.
Polyconic projection. 10,000-foot grid ticks based on New York coordinate
system, east zone. 1000-meter Universal Transverse Mercator grid,
zone 18. 1927 North American Datum. To place on the predicted
North American Datum 1983 move the projection lines 5 meters south
and 35 meters west as shown by dashed corner ticks.
Red tint indicates areas in which only landmark buildings are shown.
Purple tint indicates extension of urban areas.
Revisions shown in purple compiled from aerial photographs
taken 1978, and other source data. This information not
field checked. Map edited 1980.

SCALE 1:24 000
1 000 000 FEET
1 000 000 METERS
1 KILOMETER

CONTOUR INTERVAL 10 FEET
NATIONAL GEODETIC VERTICAL DATUM OF 1929
DEPTH CURVES AND SOUNDINGS IN FEET—DATUM IS MEAN LOW WATER
THE RELATIONSHIP BETWEEN THE TWO DATUMS IS VARIABLE
SHORELINE SHOWN REPRESENTS THE APPROXIMATE LINE OF MEAN HIGH WATER
THE MEAN RANGE OF TIDE IS 4.7 FEET

THIS MAP COMPLIES WITH NATIONAL MAP ACCURACY STANDARDS
FOR SALE BY U. S. GEOLOGICAL SURVEY, RESTON, VIRGINIA 22092
A FOLDER DESCRIBING TOPOGRAPHIC MAPS AND SYMBOLS IS AVAILABLE ON REQUEST

ROAD CLASSIFICATION
Primary highway, all weather, hard surface
Secondary highway, . II weather, hard surface
Light-duty road, all weather, improved surface
Unimproved road, fair or dry weather
Interstate Route
U. S. Route
State Route

USGS
HISTORICAL FILE
NATIONAL MAPPING DIVISION

TROY SOUTH, N. Y.
N 4237.5—W 7337.5/7.5
1953
PHOTOREVISED 1980
DMA 6269 II NW—SERIES V821

QUADRANGLE LOCATION
NEW YORK

JUL 24 1981
2750