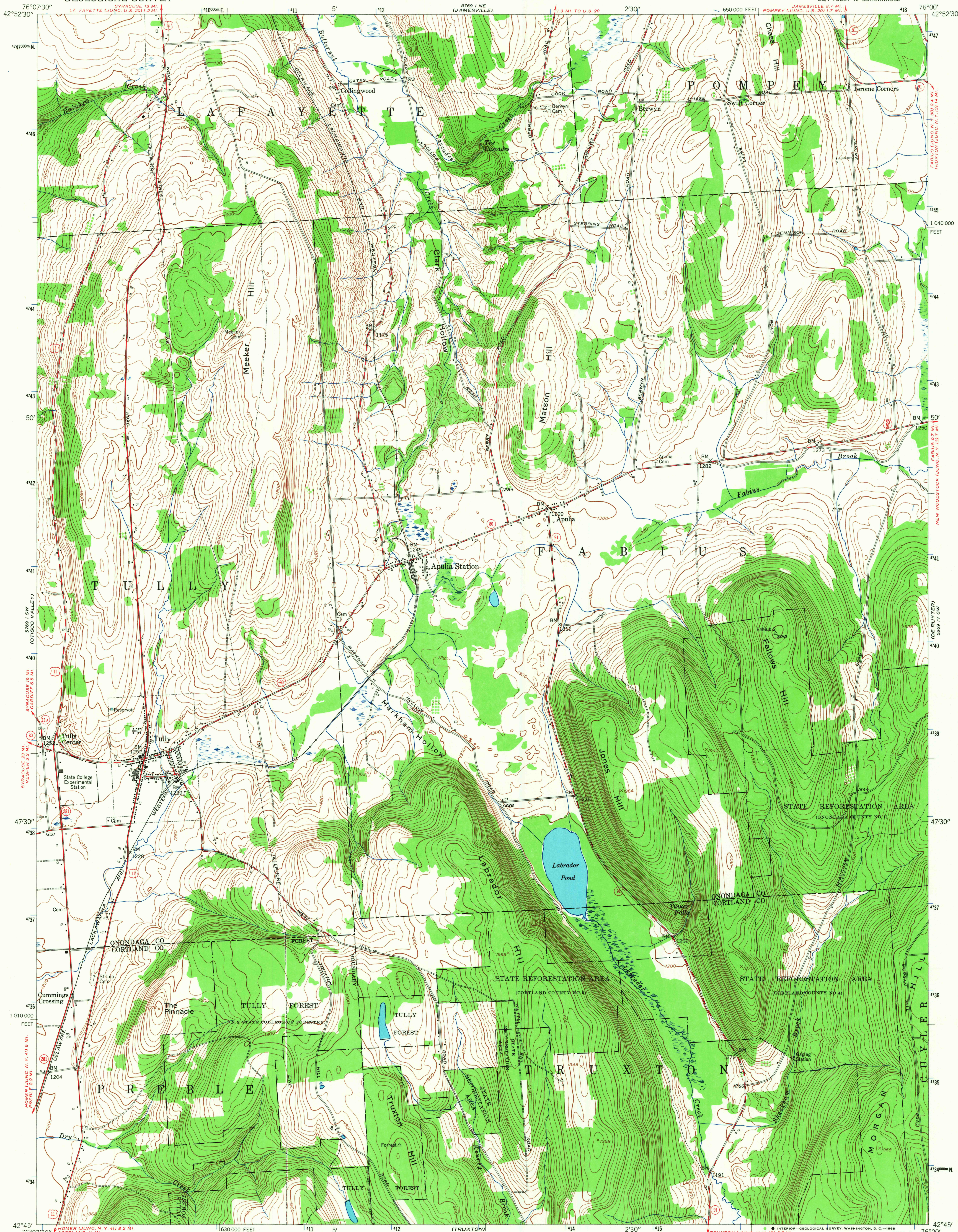


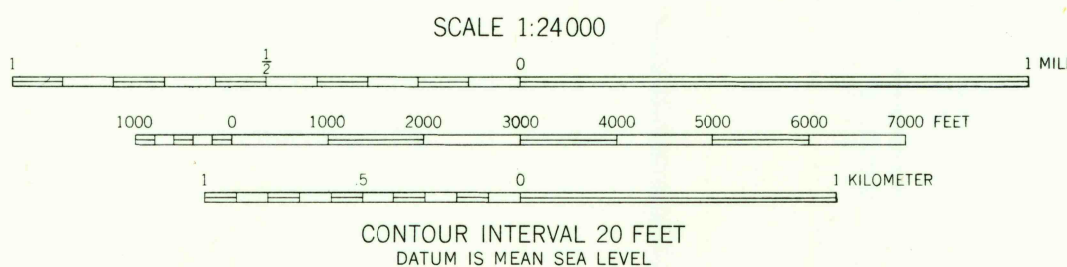
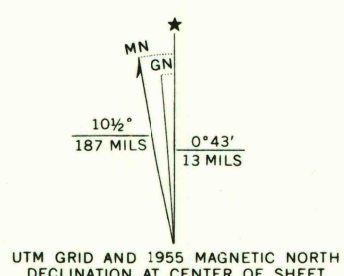
UNITED STATES
DEPARTMENT OF THE INTERIOR
GEOLOGICAL SURVEY

STATE OF NEW YORK
DEPARTMENT OF PUBLIC WORKS

TULLY QUADRANGLE
NEW YORK
7.5 MINUTE SERIES (TOPOGRAPHIC)
SE/4 TULLY 15' QUADRANGLE



Mapped by the Army Map Service
Edited and published by the Geological Survey
Control by USGS, USC&GS, and TVA
Topography from aerial photographs by photogrammetric methods. Aerial photographs taken 1942. Field check 1943.
Culture revised by the Geological Survey 1955.
Polyconic projection. 1927 North American datum.
10,000-foot grid based on New York coordinate system, central zone.
Unchecked elevations are shown in brown.
1000-meter Universal Transverse Mercator grid ticks, zone 18, shown in blue.



USGS
Historical File
Topographic Division



ROAD CLASSIFICATION
Heavy-duty ——— Light-duty ———
Medium-duty ——— Unimproved dirt ———
U.S. Route ——— State Route ———

U.S.G.S.
FILE COPY
TOPOGRAPHIC DIVISION

TULLY, N.Y.
SE/4 TULLY 15' QUADRANGLE
N 4245—W 7600/7.5
1955
AMS 5769 I SE—SERIES V821

THIS MAP COMPLIES WITH NATIONAL MAP ACCURACY STANDARDS
FOR SALE BY U.S. GEOLOGICAL SURVEY, WASHINGTON, D.C. 20242
A FOLDER DESCRIBING TOPOGRAPHIC MAPS AND SYMBOLS IS AVAILABLE ON REQUEST

4860
MAY 1 1968