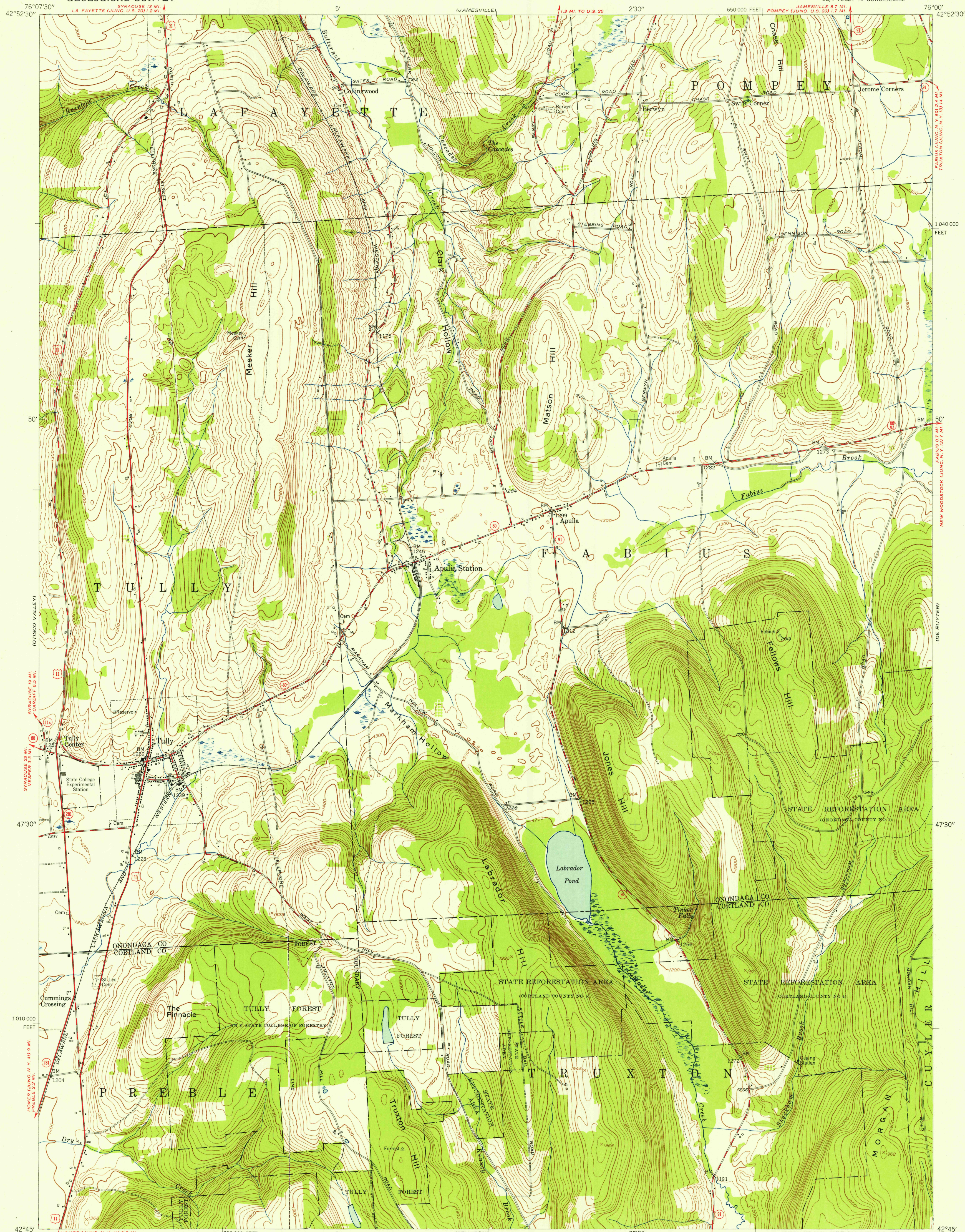


UNITED STATES
DEPARTMENT OF THE INTERIOR
GEOLOGICAL SURVEY

STATE OF NEW YORK
DEPARTMENT OF PUBLIC WORKS

TULLY QUADRANGLE
NEW YORK
7.5 MINUTE SERIES (TOPOGRAPHIC)
SE/4 TULLY 15' QUADRANGLE



U.S.G.S.
FILE COPY
TOPOGRAPHIC DIVISION

U.S.G.S.
FILE COPY
TOPOGRAPHIC DIVISION

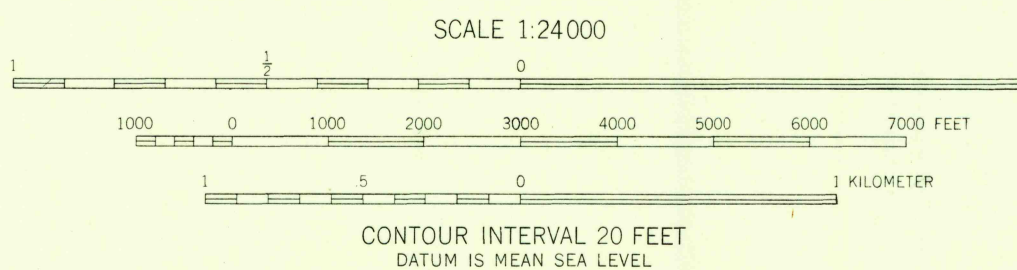
Mapped by the Army Map Service
Edited and published by the Geological Survey
Control by USGS, USC&GS, and TVA

Topography from aerial photographs by photogrammetric
methods. Aerial photographs taken 1942. Field check 1943.
Culture revised by the Geological Survey 1955.

Polyconic projection. 1927 North American datum.
10,000-foot grid based on New York coordinate system,
central zone.

Unchecked elevations are shown in brown.

APPROXIMATE MEAN
DECLINATION, 1955



USGS
Historical File
Topographic Division



ROAD CLASSIFICATION
Heavy-duty ——— Light-duty ———
Medium-duty ——— Unimproved dirt ———
U.S. Route ——— State Route ———

TULLY, N.Y.
SE/4 TULLY 15' QUADRANGLE
N4245—W7600/7.5
1955

THIS MAP COMPLIES WITH NATIONAL MAP ACCURACY STANDARDS
FOR SALE BY U. S. GEOLOGICAL SURVEY, WASHINGTON 25, D. C.
A FOLDER DESCRIBING TOPOGRAPHIC MAPS AND SYMBOLS IS AVAILABLE ON REQUEST