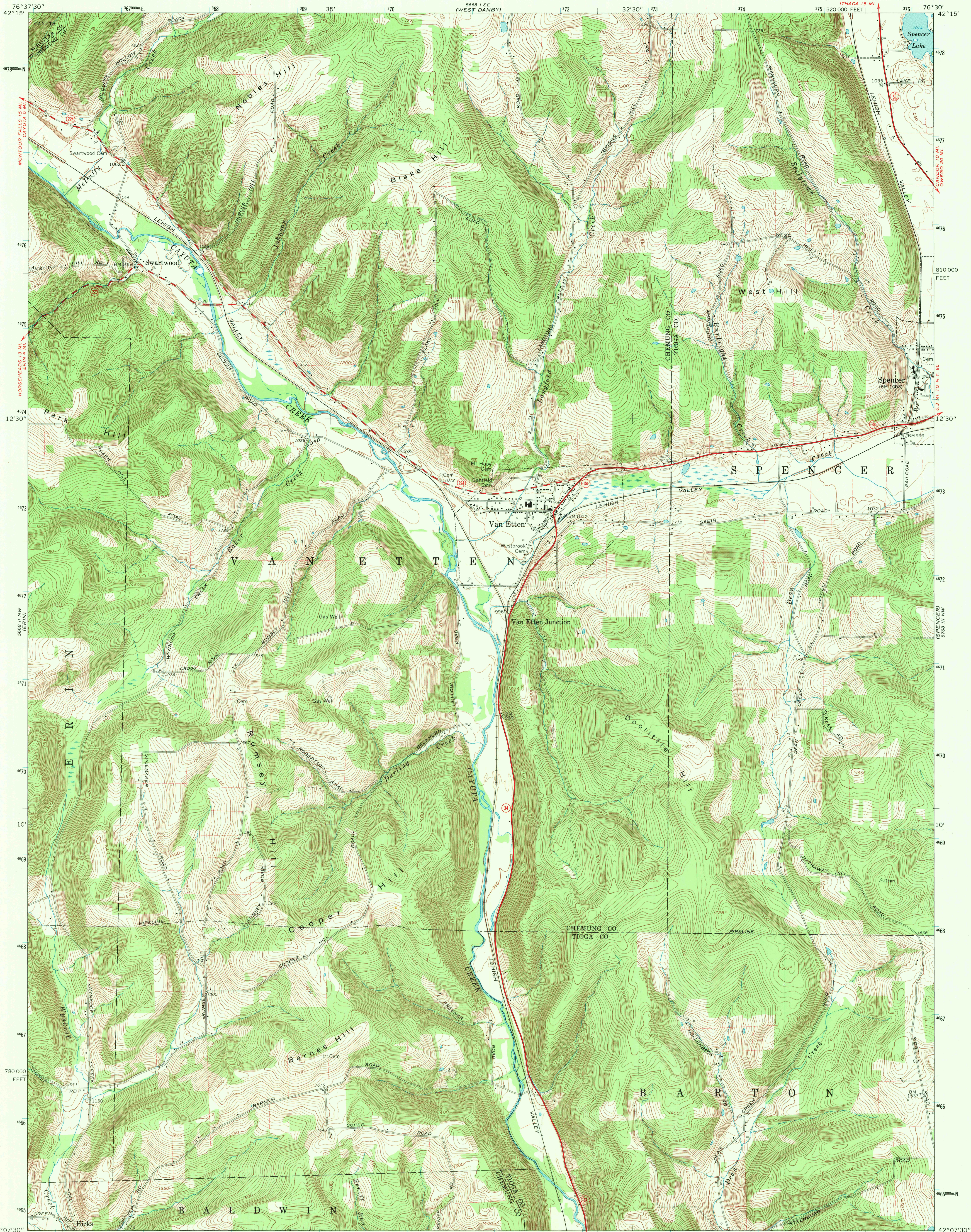


UNITED STATES
DEPARTMENT OF THE INTERIOR
GEOLOGICAL SURVEY

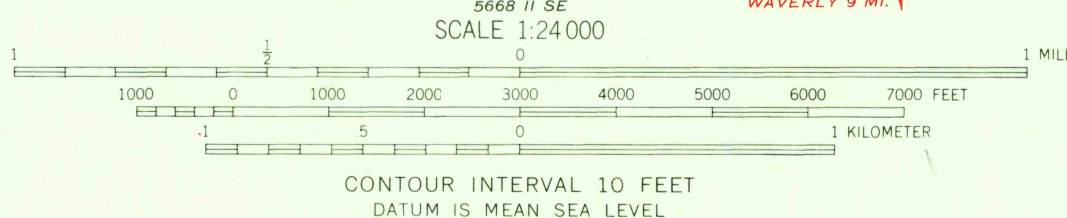
VAN ETEN QUADRANGLE
NEW YORK
7.5 MINUTE SERIES (TOPOGRAPHIC)

NE 1/4 WAVERLY 15' QUADRANGLE
17° 44' 15" N. 76° 30' 15" W.

5668 I SE
(WEST DANBY)



Maped, edited, and published by the Geological Survey
Revised in cooperation with New York Department of Transportation
Control by USGS and US&GS
Topography by photogrammetric methods from aerial photographs
taken 1944 and 1948. Field checked 1954
Revised from aerial photographs taken 1968. Field checked 1969
Polyconic projection. 1927 North American datum
10,000-foot grid based on New York coordinate system, central zone
1000-meter Universal Transverse Mercator grid ticks, zone 18,
shown in blue
Fine red dashed lines indicate selected fence and field lines where
generally visible on aerial photographs. This information is unchecked



ROAD CLASSIFICATION
Primary highway, all weather, hard surface
Secondary highway, all weather, hard surface
Light-duty road, all weather, improved surface
Unimproved road, fair or dry weather
State Route



VAN ETEN, N. Y.
NE 1/4 WAVERLY 15' QUADRANGLE
N4207.5-W7630.7/5
1969
AMS 5668 II NE-SERIES V821

DUPLICATE
3225
AUG 25 1971

THIS MAP COMPLIES WITH NATIONAL MAP ACCURACY STANDARDS
FOR SALE BY U. S. GEOLOGICAL SURVEY, WASHINGTON, D. C. 20242
A FOLDER DESCRIBING TOPOGRAPHIC MAPS AND SYMBOLS IS AVAILABLE ON REQUEST