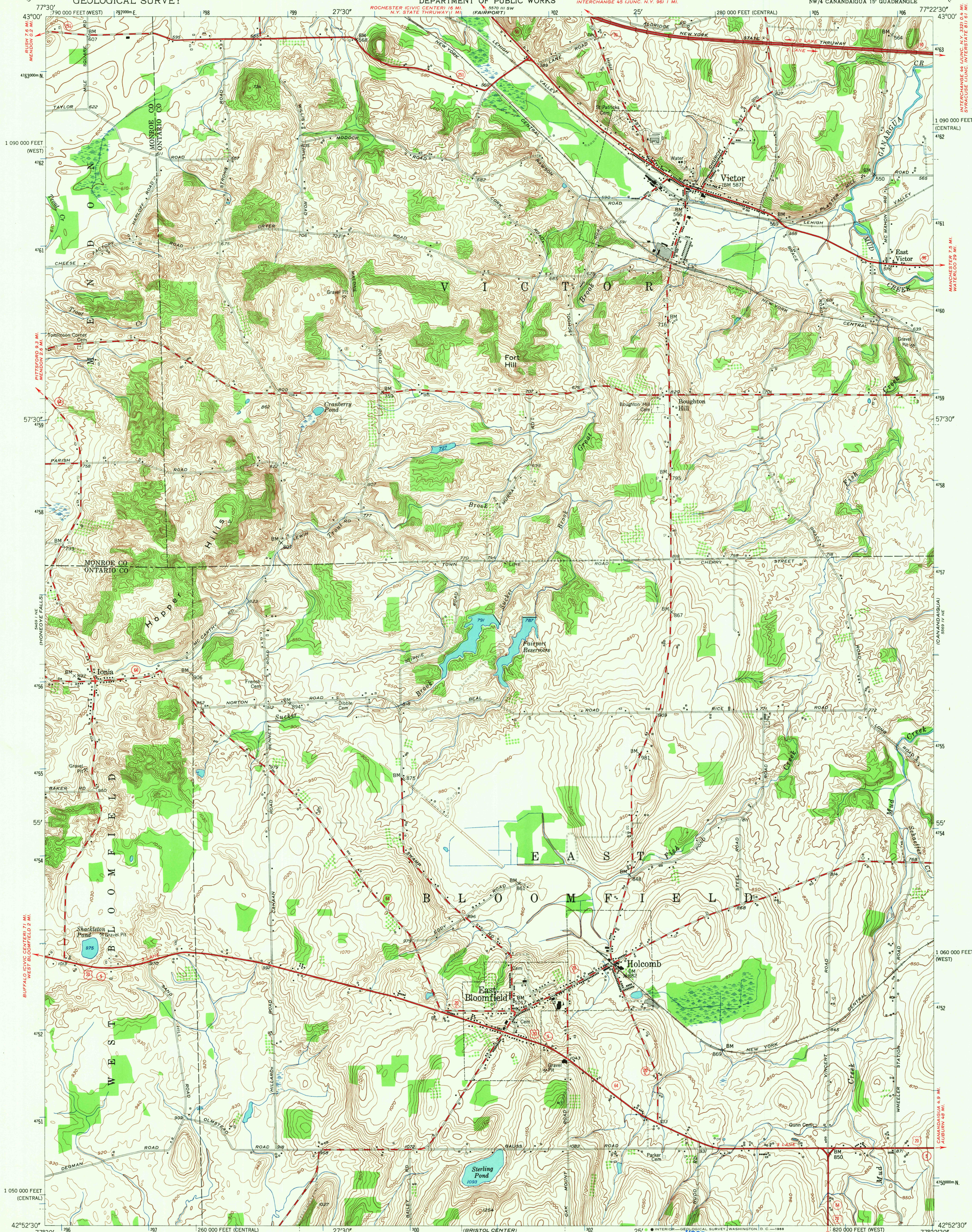


UNITED STATES  
DEPARTMENT OF THE INTERIOR  
GEOLOGICAL SURVEY

STATE OF NEW YORK  
DEPARTMENT OF PUBLIC WORKS

VICTOR QUADRANGLE  
NEW YORK  
7.5 MINUTE SERIES (TOPOGRAPHIC)  
NW/4 CANANDAIGUA 15' QUADRANGLE

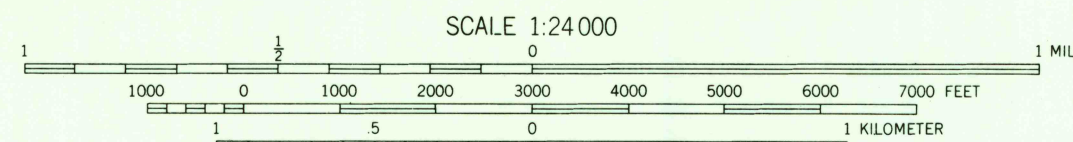
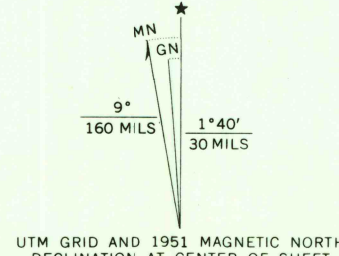


Mapped, edited, and published by the Geological Survey

Control by USGS and USC&GS

Culture and drainage in part compiled by Corps of Engineers,  
Dept. of the Army, from aerial photographs taken 1942  
Topography by plane-table methods 1951  
Contours in Monroe County surveyed 1932. Revised 1951

Polyconic projection. 1927 North American datum  
10,000-foot grids based on New York coordinate system,  
central and west zones  
1000-meter Universal Transverse Mercator grid ticks,  
zone 18, shown in blue



CONTOUR INTERVAL 10 FEET  
DATUM IS MEAN SEA LEVEL

THIS MAP COMPLIES WITH NATIONAL MAP ACCURACY STANDARDS  
FOR SALE BY U. S. GEOLOGICAL SURVEY, WASHINGTON, D. C. 20242  
A FOLDER DESCRIBING TOPOGRAPHIC MAPS AND SYMBOLS IS AVAILABLE ON REQUEST

Historical File  
Topographic Division



Heavy-duty ——— Light-duty ———  
Medium-duty ——— Unimproved dirt ———  
Interstate Route U. S. Route State Route

U.S.G.S.  
FILE COPY  
TOPOGRAPHIC DIVISION

VICTOR, N. Y.  
NW/4 CANANDAIGUA 15' QUADRANGLE  
N4252.5-W7722.5/7.5  
1951  
AMS 5569 IV NW-SERIES V821

3720  
SEP 20 1968