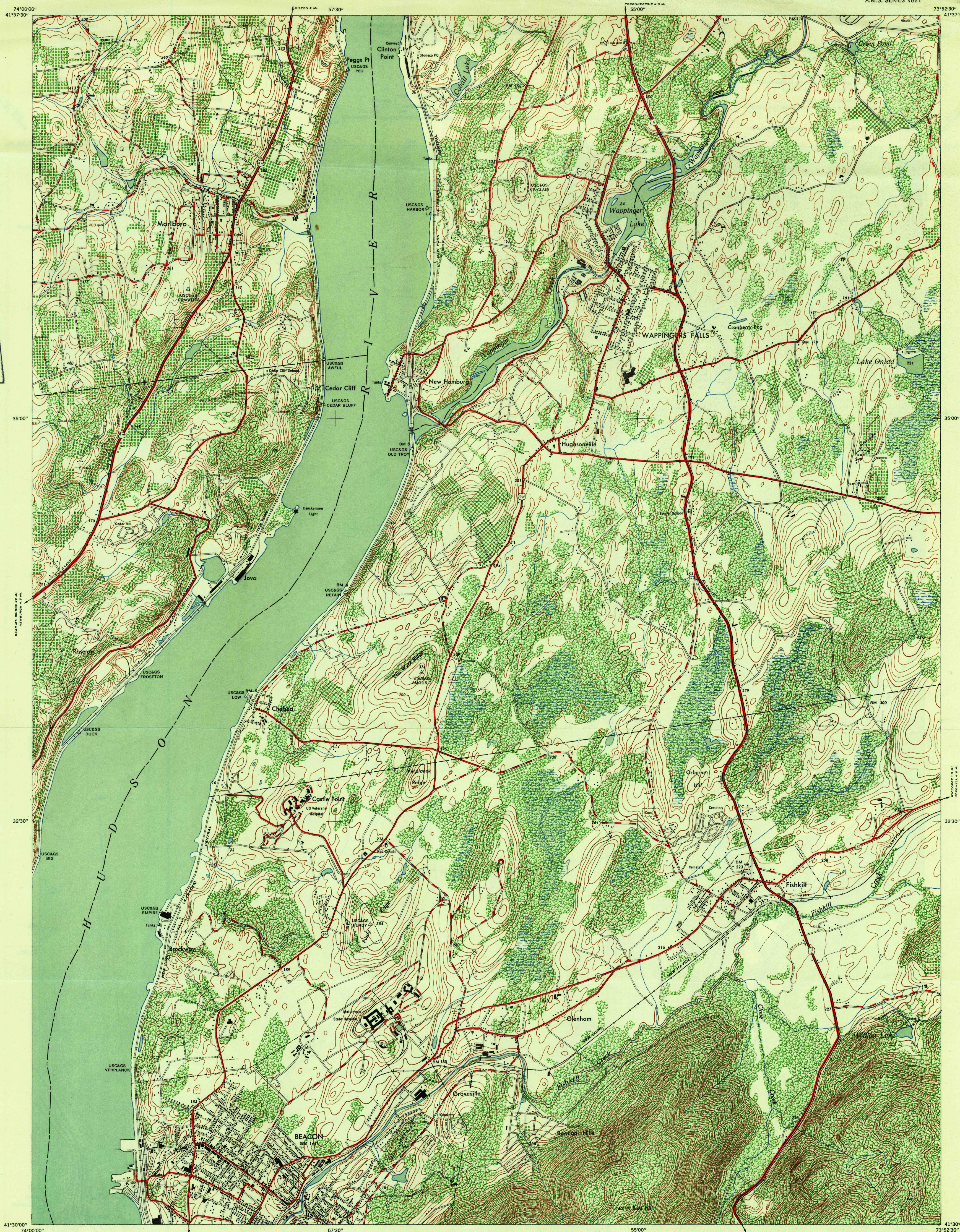
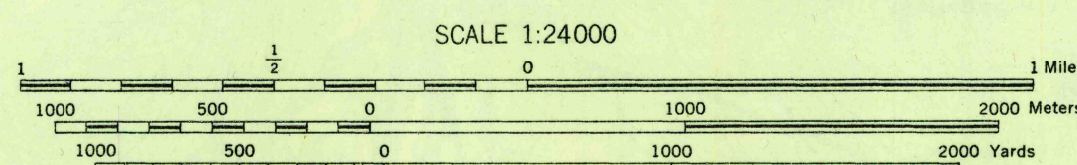
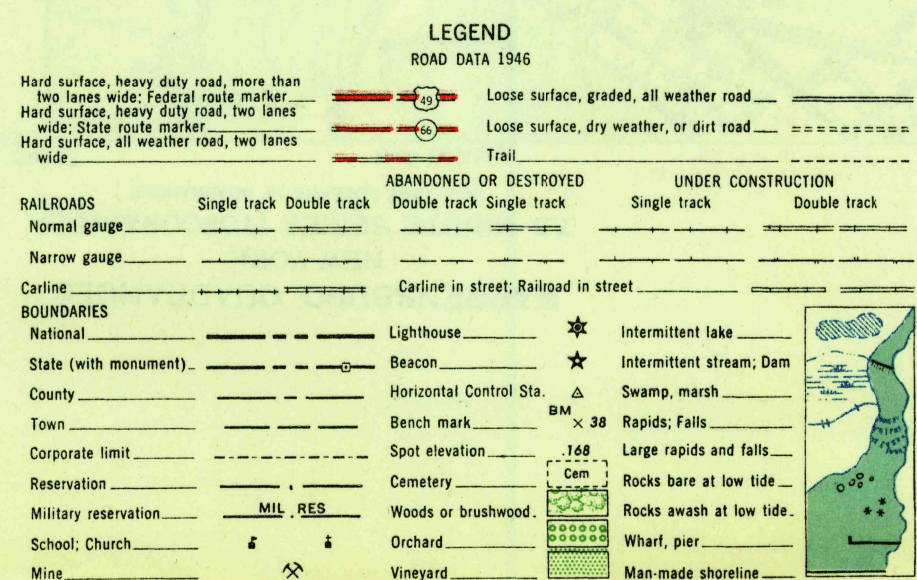


U.S.G.S.
FILE COPY
Inspection and RatingU.S.G.S.
FILE COPY
Inspection and RatingA.M.S. V821
Type F (AMS 1), 1946; Revised (AMS 2), 1946.

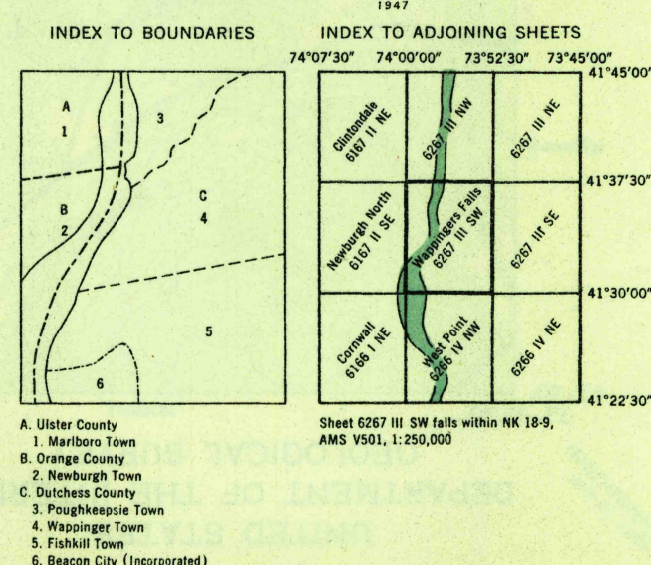
Prepared under the direction of the Chief of Engineers by the Army Map Service (AM), U. S. Army, Washington, D. C. Redrawn in 1946 from New York, 1:62,500, USGS, Poughkeepsie, 1943. Planimetric detail revised from aerial photography by photo-planimetric methods. Aerial photography by U. S. Army Air Force, 1946. Roads classified from County Maps prepared by Public Roads Administration, 1946. Horizontal and vertical control by U. S. Geological Survey. Planimetry and road classification field checked by the United States Military Academy.



CONTOUR INTERVAL 20 FEET
DATUM IS MEAN SEA LEVEL
TRANSVERSE MERCATOR PROJECTION
1927 NORTH AMERICAN DATUM

HEIGHTS IN FEET

REPRINTED FROM MILITARY EDITION FOR CIVIL USE
ENDING REVISION FOR STANDARD ISSUE
SOLD AND DISTRIBUTED BY U. S. GEOLOGICAL SURVEY, WASHINGTON 25, D. C.

USGS
Historical File
Topographic DivisionAPPROXIMATE MEAN
DECLINATION, 1947WAPPINGERS FALLS, NEW YORK
N4130-W7352.5/7.5