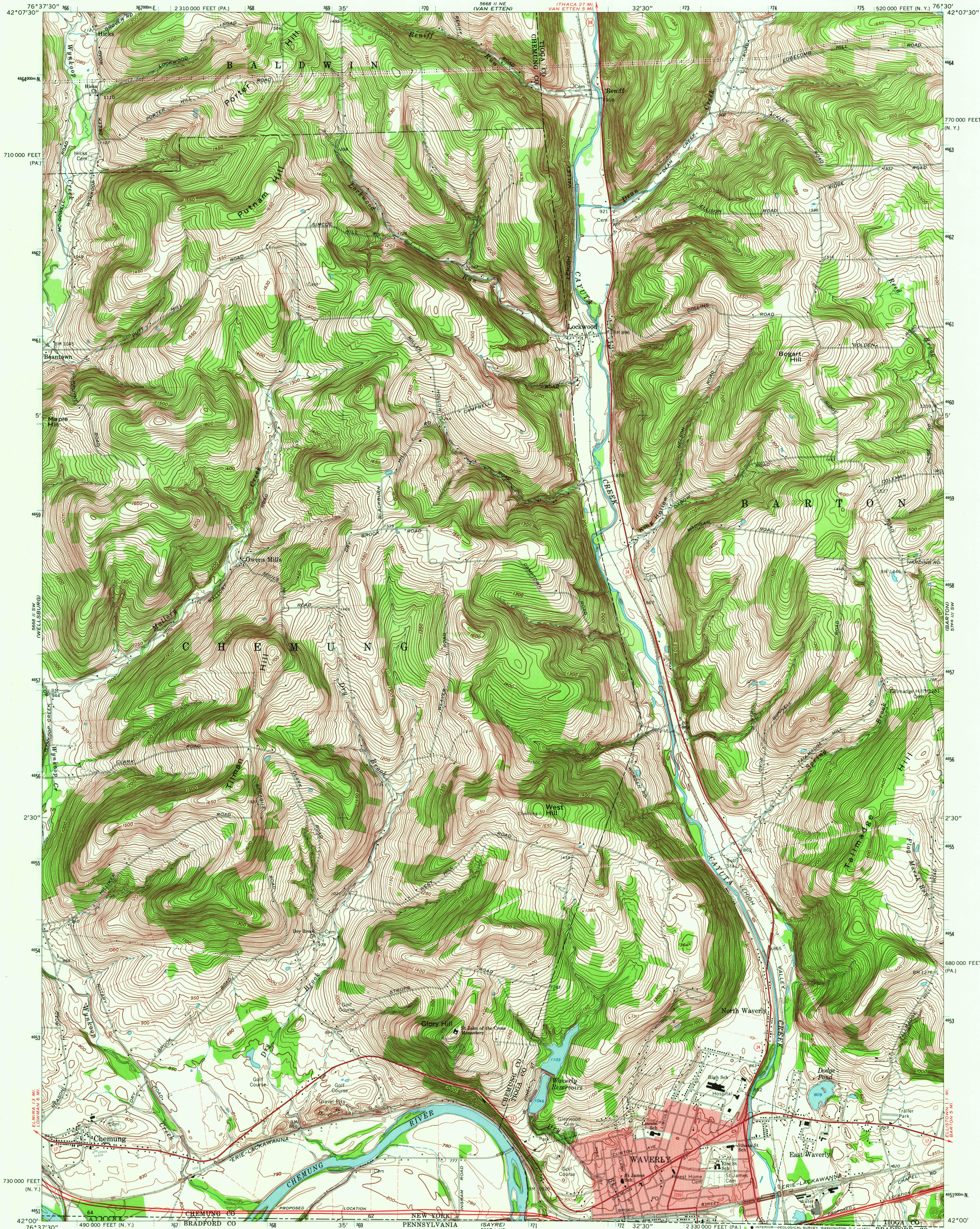
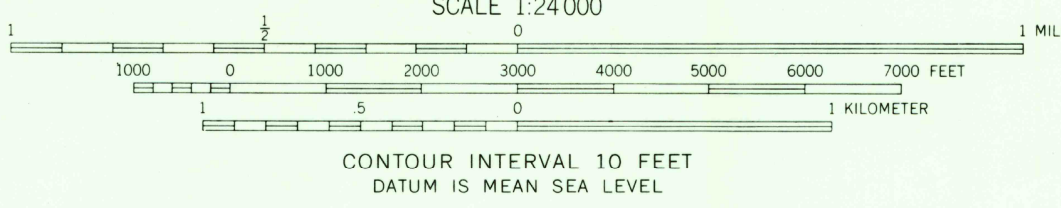
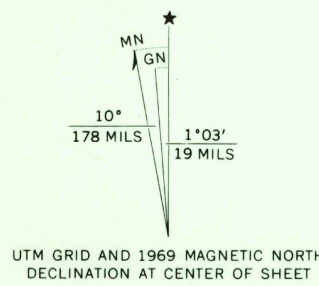


UNITED STATES
DEPARTMENT OF THE INTERIOR
GEOLOGICAL SURVEY

WAVERLY QUADRANGLE
NEW YORK-PENNSYLVANIA
7.5 MINUTE SERIES (TOPOGRAPHIC)
SE 1/4 WAVERLY 15' QUADRANGLE



Mapped, edited, and published by the Geological Survey
Revised in cooperation with New York Department of
Transportation
Control by USGS and USC&GS
Topography by photogrammetric methods from aerial photographs
taken 1948. Field checked 1954. Revised from aerial
photographs taken 1968. Field checked 1969
Polyconic projection. 1927 North American datum
10,000-foot grids based on New York coordinate system, central zone,
and Pennsylvania coordinate system, north zone
1000-meter Universal Transverse Mercator grid ticks,
zone 18, shown in blue
Fine red dashed lines indicate selected fence and field lines where
generally visible on aerial photographs. This information is uncheck
Red tint indicates area in which only landmark buildings are shown



ROAD CLASSIFICATION
Primary highway, all weather, Light-duty road, all weather,
hard surface improved surface
Unimproved road, fair or dry
weather
State Route

WAVERLY, N. Y.-PA.
SE 1/4 WAVERLY 15' QUADRANGLE
N4200-W7630/7.5

1969
AMS 5668 II SE-SERIES V821

THIS MAP COMPLIES WITH NATIONAL MAP ACCURACY STANDARDS
FOR SALE BY U. S. GEOLOGICAL SURVEY, WASHINGTON, D. C. 20242
A FOLDER DESCRIBING TOPOGRAPHIC MAPS AND SYMBOLS IS AVAILABLE ON REQUEST