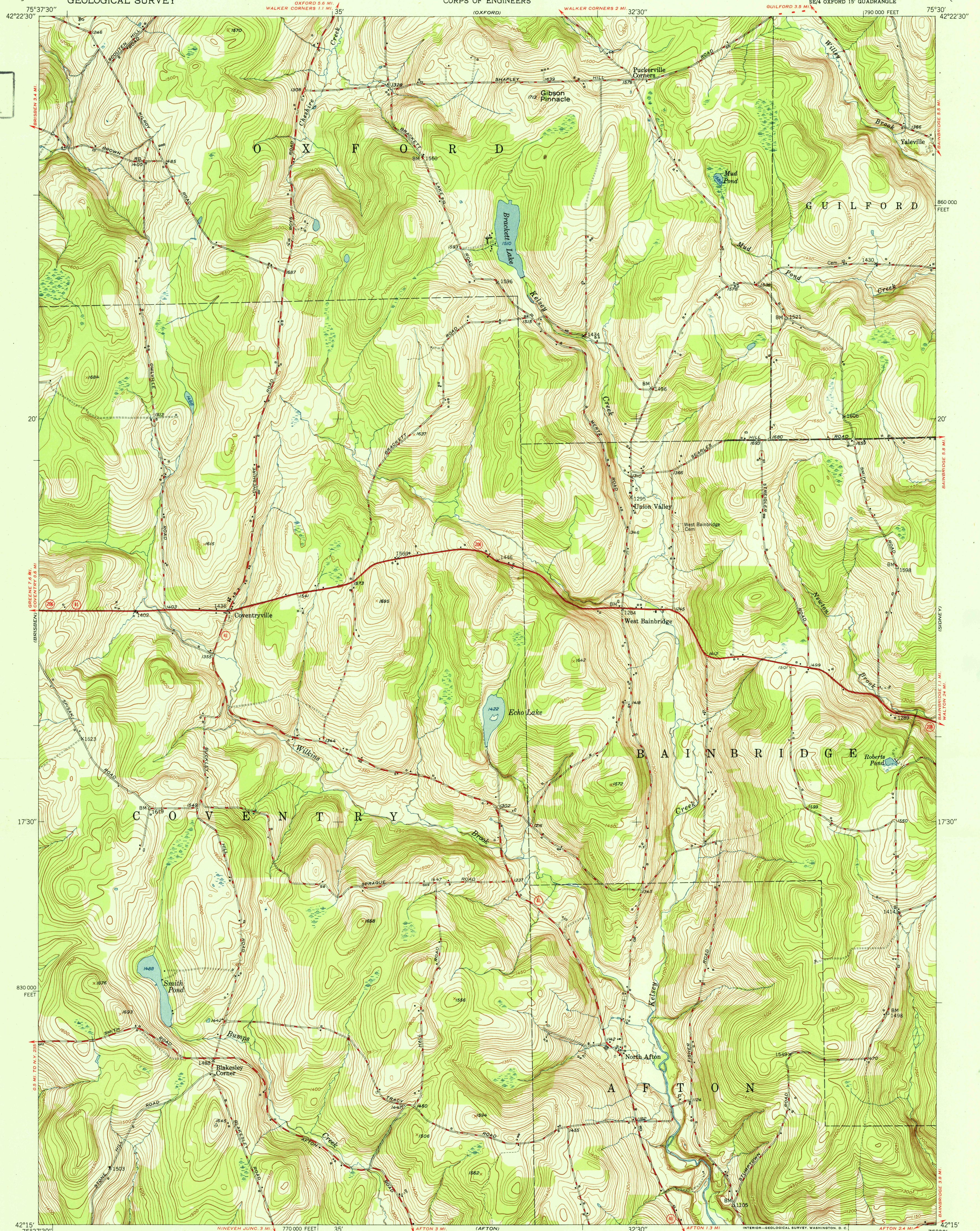
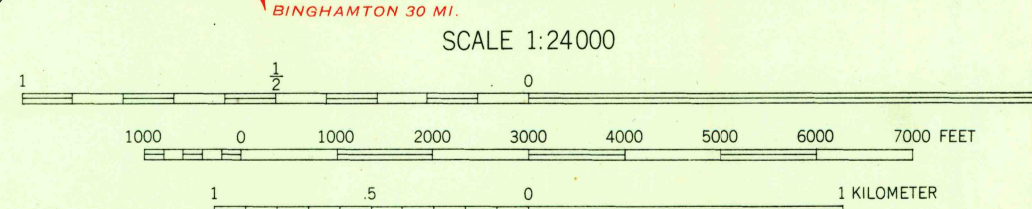


U. S. G. S.
FILE COPY
Inspection and Editing.



Maped, edited, and published by the Geological Survey
Control by USGS, USC&GS, and USED
Topography from aerial photographs by multiplex methods
Aerial photographs taken 1944. Field check 1949
Polyconic projection. 1927 North American datum
10,000-foot grid based on New York coordinate system,
central zone



CONTOUR INTERVAL 10 FEET
DATUM IS MEAN SEA LEVEL

USGS
Historical File
Topographic Division

ROAD CLASSIFICATION
HARD SURFACE ALL WEATHER ROADS DRY WEATHER ROADS
Heavy-duty — 4 LANE 16 LANE Improved dirt
Medium-duty — 4 LANE 16 LANE Unimproved dirt
Loose-surface, graded, or narrow hard-surface —
U. S. Route State Route

WEST BAINBRIDGE, N. Y.
SE/4 OXFORD 15' QUADRANGLE
N4215-W7530/7.5

U. S. G. S.
FILE COPY
Inspection and Editing.

EDITION OF 1951

THIS MAP COMPLIES WITH NATIONAL MAP ACCURACY STANDARDS
FOR SALE BY U. S. GEOLOGICAL SURVEY, WASHINGTON 25, D. C.
A FOLDER DESCRIBING TOPOGRAPHIC MAPS AND SYMBOLS IS AVAILABLE ON REQUEST