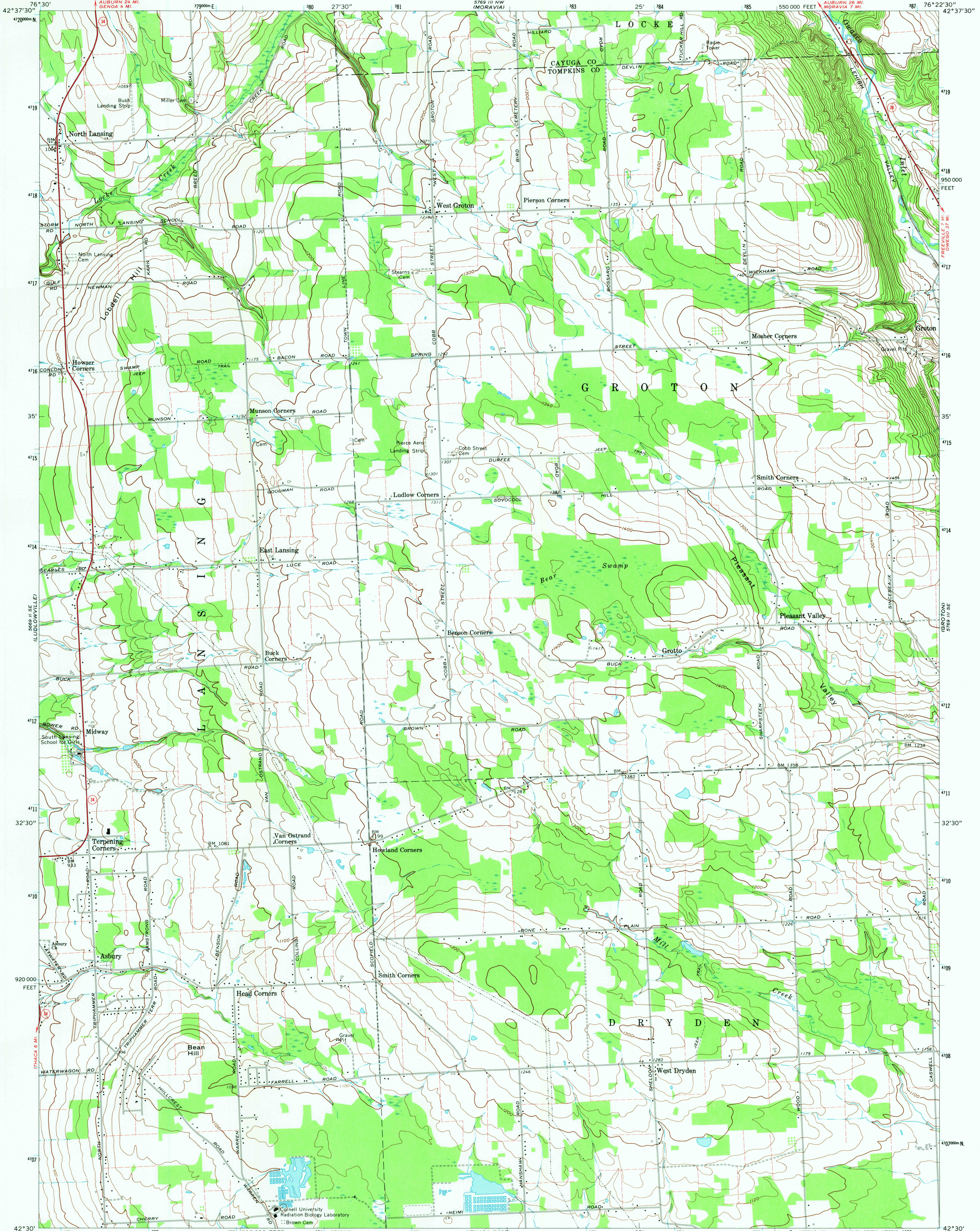
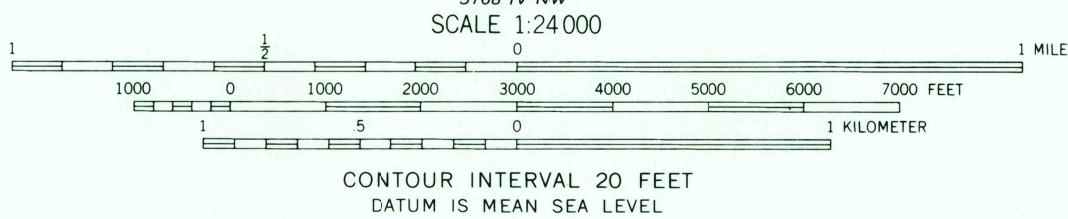


UNITED STATES  
DEPARTMENT OF THE INTERIOR  
GEOLOGICAL SURVEY

WEST GROTON QUADRANGLE  
NEW YORK  
7.5 MINUTE SERIES (TOPOGRAPHIC)



Maped by the Army Map Service  
Edited and published by the Geological Survey  
Control by USGS, USCGS and Tennessee Valley Authority  
Topography by photogrammetric methods from aerial photographs  
taken 1942. Field checked 1943. Revised by the Geological  
Survey from aerial photographs taken 1969. Field checked 1970  
Polyconic projection, 1927 North American datum  
10,000-foot grid based on New York coordinate system, central zone  
1000-meter Universal Transverse Mercator grid ticks,  
zone 18, shown in blue  
Fine red dashed lines indicate selected fence and field lines where  
generally visible on aerial photographs. This information is uncheckd  
Map photoinspected 1976  
No major culture or drainage changes observed



ROAD CLASSIFICATION  
Primary highway, hard surface  
Secondary highway, hard surface  
Light-duty road, hard or improved surface  
Unimproved road  
Interstate Route  
U. S. Route  
State Route



WEST GROTON, N. Y.  
N4230—W7622.5/7.5  
1970  
PHOTOINSPECTED 1976  
AMS 5769 III SW—SERIES V821

JUL 7 1983

1600