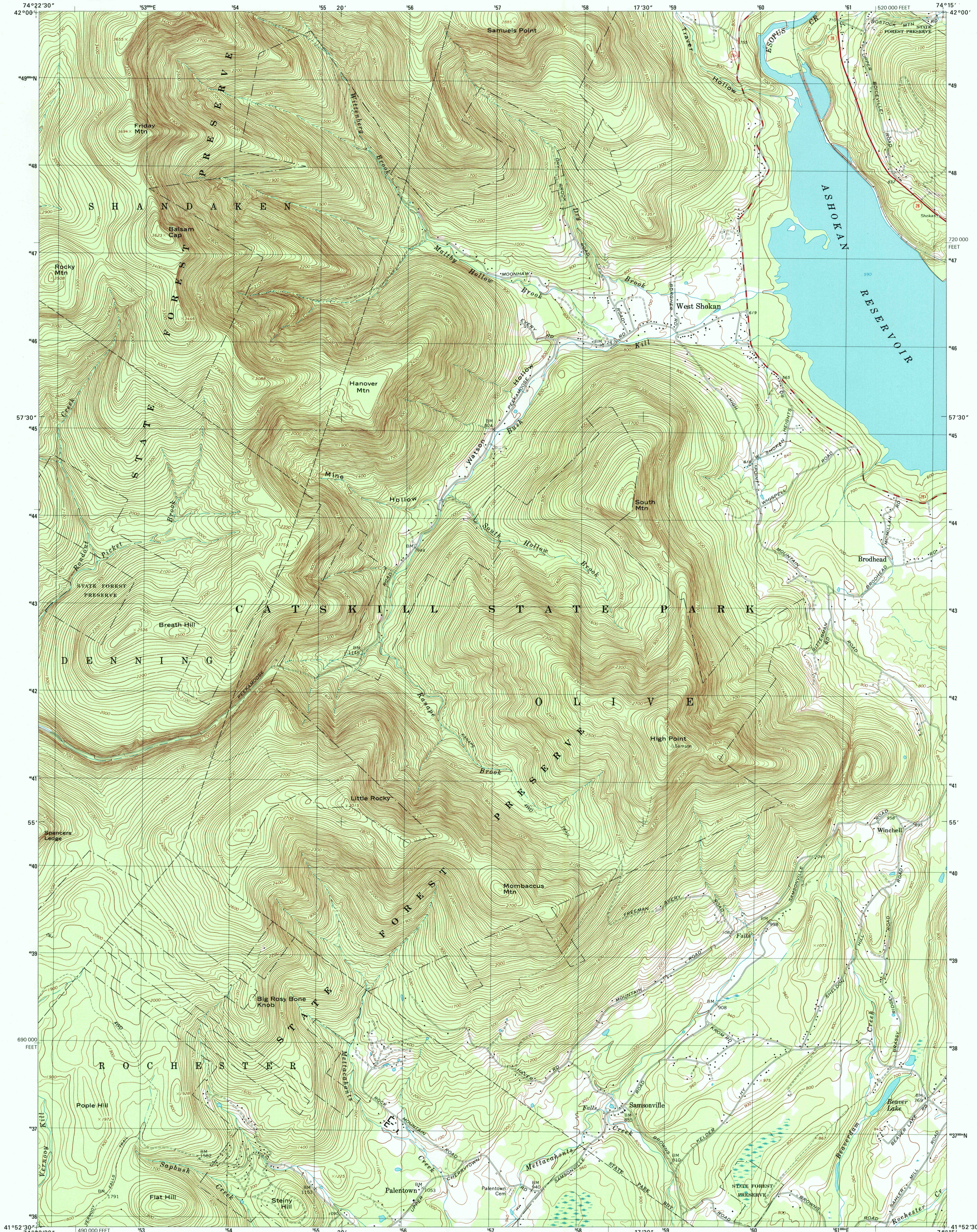




U.S. DEPARTMENT OF THE INTERIOR
U.S. GEOLOGICAL SURVEY

WEST SHOKAN QUADRANGLE
NEW YORK-ULSTER CO.
7.5-MINUTE SERIES (TOPOGRAPHIC)



RECEIVED

FEB 28 2001

USGS NWL

HISTORICAL MAP ARCHIVES

Produced by the United States Geological Survey

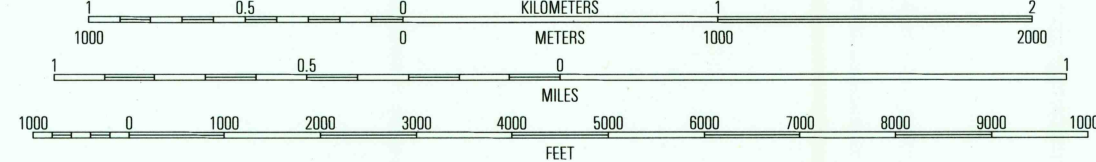
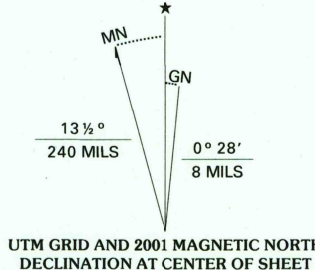
Derived from imagery taken 1968 and other sources. Photoinspected using imagery taken 1997; no major culture or drainage changes observed. Survey control current as of 1969. Boundaries verified 2000.

North American Datum of 1927 (NAD 27). Projection and 10 000-foot ticks: New York coordinate system, east zone (transverse Mercator).

1000-meter Universal Transverse Mercator grid, zone 18.

North American Datum of 1983 (NAD 83) is shown by dashed corner ticks. The values of the shift between NAD 27 and NAD 83 for 7.5-minute intersections are obtainable from National Geodetic Survey NADCON software.

There may be private inholdings within the boundaries of the National or State reservations shown on this map.



SCALE 1:24 000
CONTOUR INTERVAL 20 FEET
NATIONAL GEODETIC DATUM OF 1927
TO CONVERT FROM FEET TO METERS, MULTIPLY BY 0.3048



QUADRANGLE LOCATION

ROAD CLASSIFICATION		
Primary highway hard surface	Light-duty road, hard or improved surface	
Secondary highway hard surface	Unimproved road	
Interstate Route	U.S. Route	State Route

1	2	3
4	5	6
7	8	9

1 Shandaken
2 Phoenicia
3 Bearville
4 Peekamoose Mountain
5 Ashokan
6 Rondout Reservoir
7 Kerhonkson
8 Mohawk Lake

WEST SHOKAN, NY

1997

NIMA 6167 IV NE-SERIES V821

