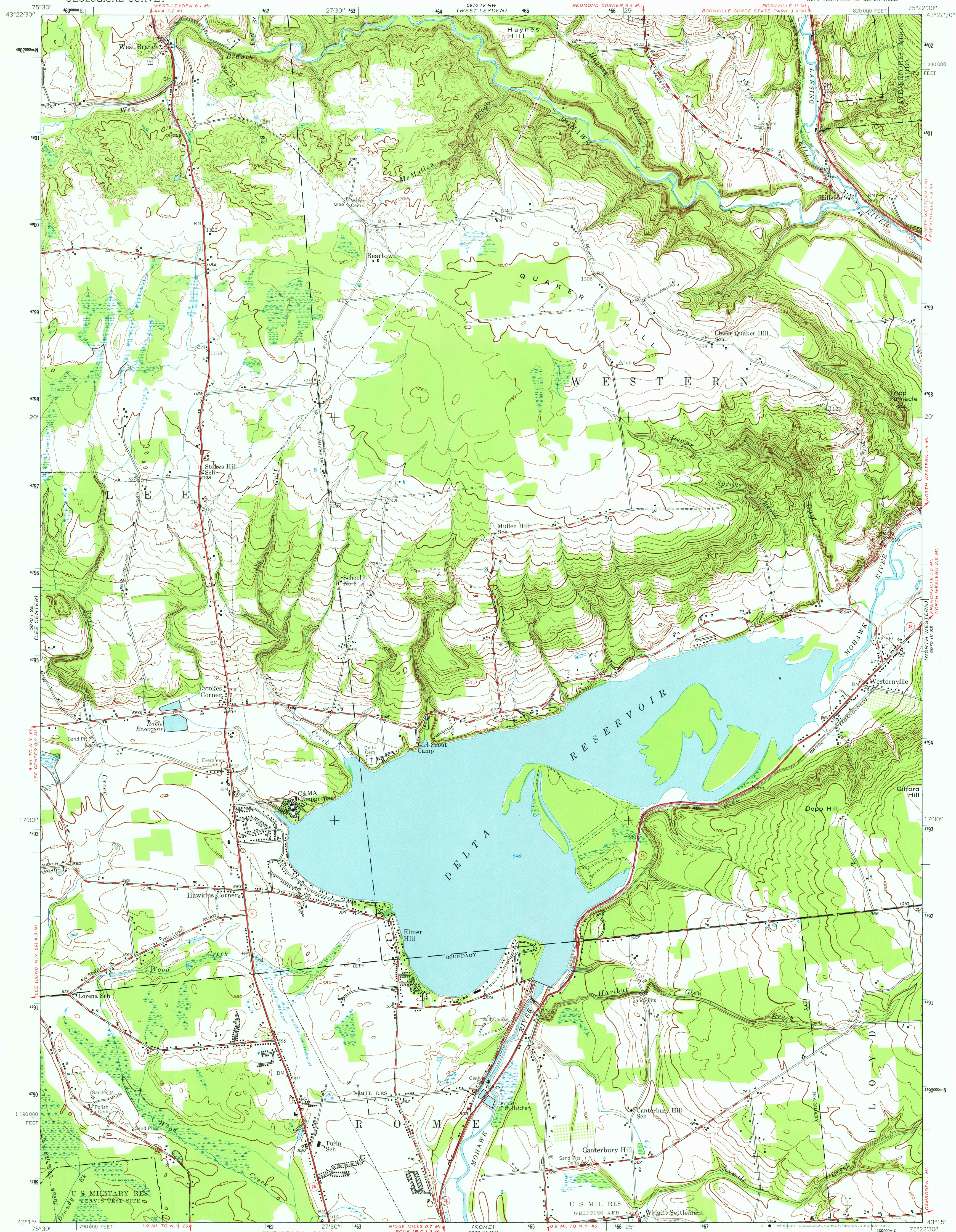


UNITED STATES  
DEPARTMENT OF THE INTERIOR  
GEOLOGICAL SURVEY

WESTERNVILLE QUADRANGLE  
NEW YORK—ONEIDA CO.  
7.5 MINUTE SERIES (TOPOGRAPHIC)  
SW/4 BOONVILLE 15' QUADRANGLE

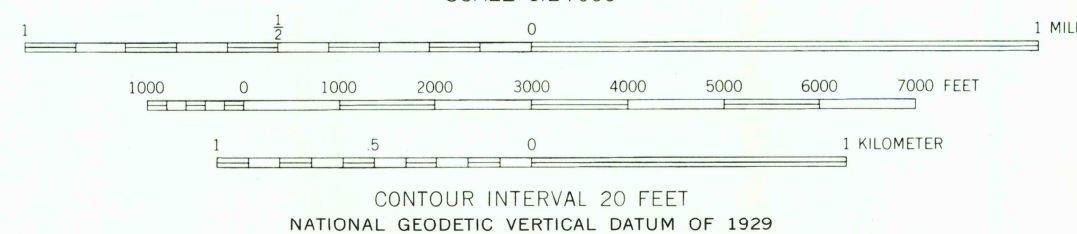
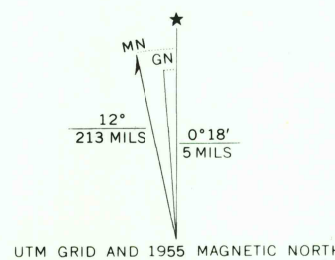


Mapped, edited, and published by the Geological Survey

Control by USGS and USC&GS

Culture and drainage in part compiled from aerial photographs  
taken 1942. Topography by planetable surveys 1946  
Revised 1955

Polyconic projection. 1927 North American datum  
10,000-foot grid based on New York coordinate system,  
central zone  
1,000-meter Universal Transverse Mercator grid ticks,  
zone 18, shown in blue



THIS MAP COMPLIES WITH NATIONAL MAP ACCURACY STANDARDS  
FOR SALE BY U. S. GEOLOGICAL SURVEY, RESTON, VIRGINIA 22092  
A FOLDER DESCRIBING TOPOGRAPHIC MAPS AND SYMBOLS IS AVAILABLE ON REQUEST



ROAD CLASSIFICATION  
Heavy-duty ——— Light-duty ———  
Medium-duty ——— Unimproved dirt ———  
State Route ———

USGS  
Historical File  
Topographic Division

WESTERNVILLE, N. Y.  
SW/4 BOONVILLE 15' QUADRANGLE  
N4315—W7522.5/7.5

1955  
AMS 5970 IV SW—SERIES V821

2300  
OCT 20 1977