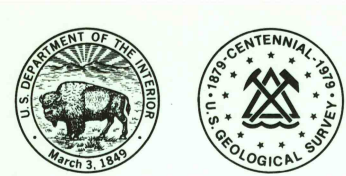
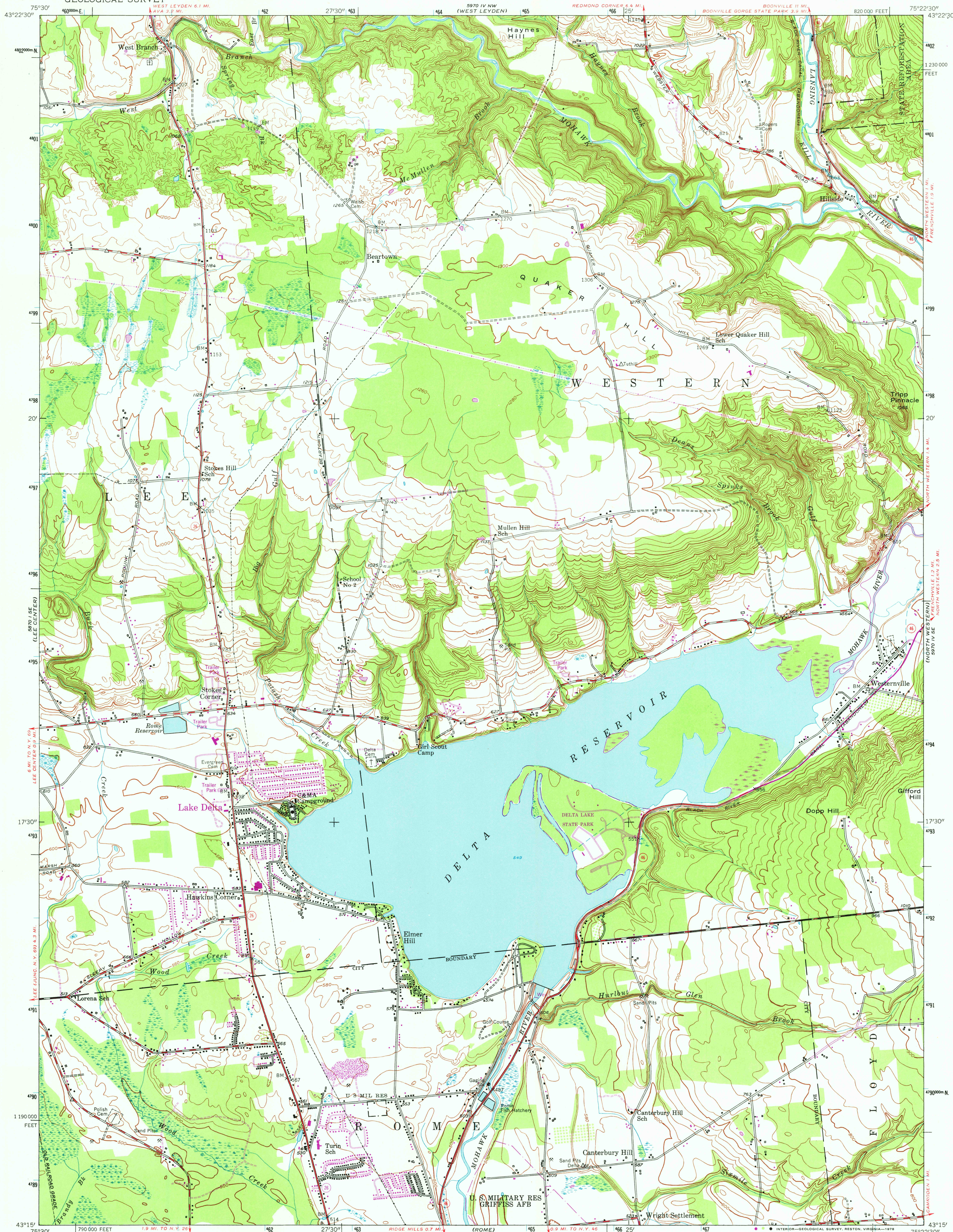


UNITED STATES  
DEPARTMENT OF THE INTERIOR  
GEOLOGICAL SURVEY



WESTERNVILLE QUADRANGLE  
NEW YORK—ONEIDA CO.  
7.5 MINUTE SERIES (TOPOGRAPHIC)

5970 IV NE  
(BOONVILLE)



Mapped, edited, and published by the Geological Survey

Control by USGS and USC&GS

Culture and drainage in part compiled from aerial photographs  
taken 1942. Topography by planetable surveys 1946  
Revised 1955

Polyconic projection. 1927 North American datum

10,000-foot grid based on New York coordinate system,

central zone

1,000-meter Universal Transverse Mercator grid ticks,

zone 18, shown in blue

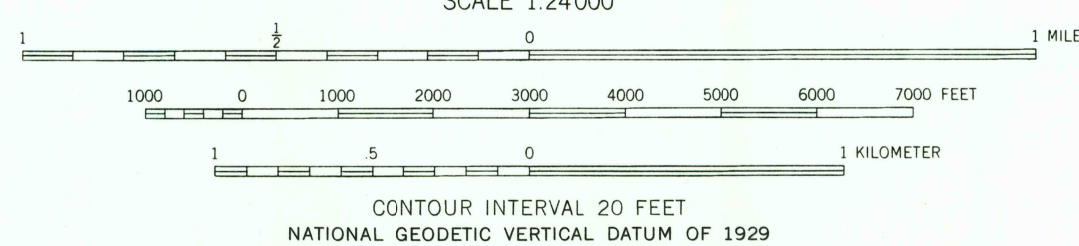
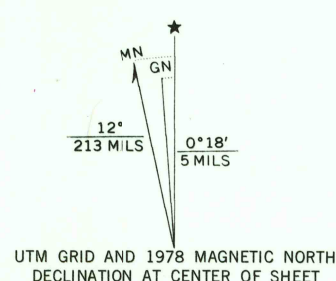
There may be private inholdings within the boundaries of

the National or State reservations shown on this map

Revisions shown in purple compiled from aerial photographs

taken 1976 and other source data. This information not

field checked. Map edited 1978



THIS MAP COMPLIES WITH NATIONAL MAP ACCURACY STANDARDS  
FOR SALE BY U.S. GEOLOGICAL SURVEY, RESTON, VIRGINIA 22092  
A FOLDER DESCRIBING TOPOGRAPHIC MAPS AND SYMBOLS IS AVAILABLE ON REQUEST



ROAD CLASSIFICATION  
Heavy-duty ——— Light-duty ———  
Medium-duty ——— Unimproved dirt ———  
State Route ———

WESTERNVILLE, N. Y.

N 4315—W 7522.5/7.5

USGS  
Historical File  
Topographic Division

1955  
PHOTOREVISED 1978  
AMS 5970 IV SW—SERIES V821

APR 23 1978

3300