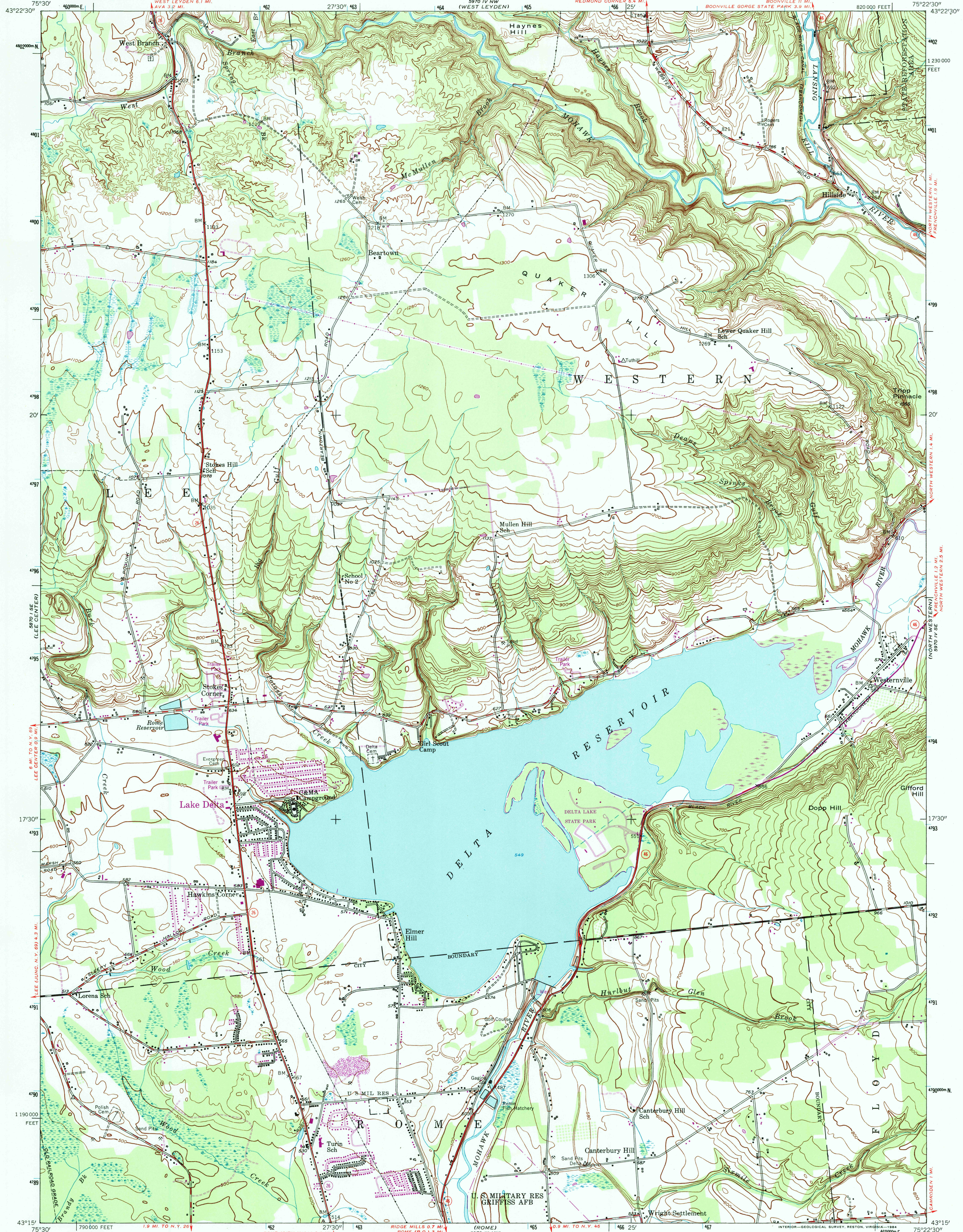
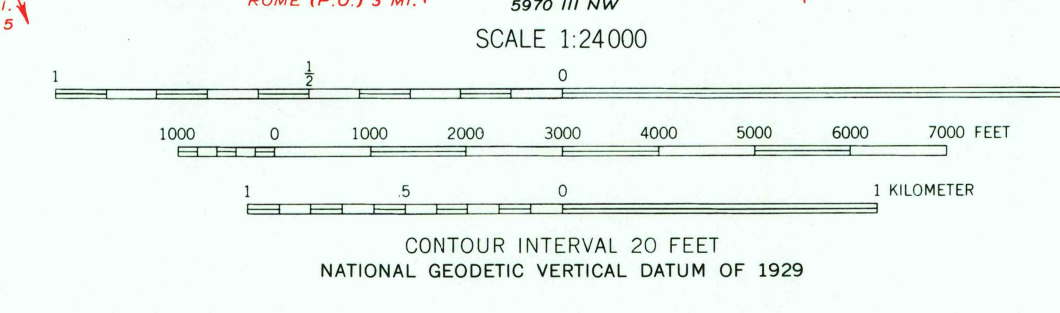
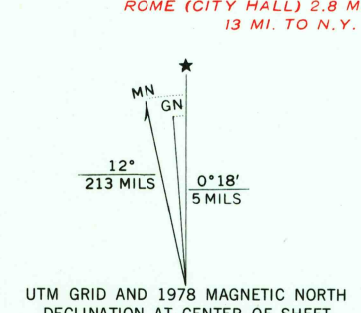


UNITED STATES  
DEPARTMENT OF THE INTERIOR  
GEOLOGICAL SURVEY

WESTERNVILLE QUADRANGLE  
NEW YORK—ONEIDA CO.  
7.5 MINUTE SERIES (TOPOGRAPHIC)



Mapped, edited, and published by the Geological Survey  
Control by USGS and USC&GS  
Culture and drainage in part compiled from aerial photographs  
taken 1942. Topography by planetable surveys 1946  
Revised 1955  
Polyconic projection. 1927 North American datum  
10,000-foot grid based on New York coordinate system,  
central zone  
1,000-meter Universal Transverse Mercator grid ticks,  
zone 18, shown in blue  
There may be private inholdings within the boundaries of  
the National or State reservations shown on this map  
Revisions shown in purple compiled from aerial photographs  
taken 1976 and other source data. This information not  
field checked. Map edited 1978



THIS MAP COMPLIES WITH NATIONAL MAP ACCURACY STANDARDS  
FOR SALE BY U. S. GEOLOGICAL SURVEY, RESTON, VIRGINIA 22092  
A FOLDER DESCRIBING TOPOGRAPHIC MAPS AND SYMBOLS IS AVAILABLE ON REQUEST



ROAD CLASSIFICATION  
Heavy-duty ——— Light-duty ———  
Medium-duty ——— Unimproved dirt ———  
State Route ———

WESTERNVILLE, N. Y.

N 4315—W 7522.5/7.5  
1955  
PHOTOREVISED 1978  
AMS 5970 IV SW—SERIES V821

