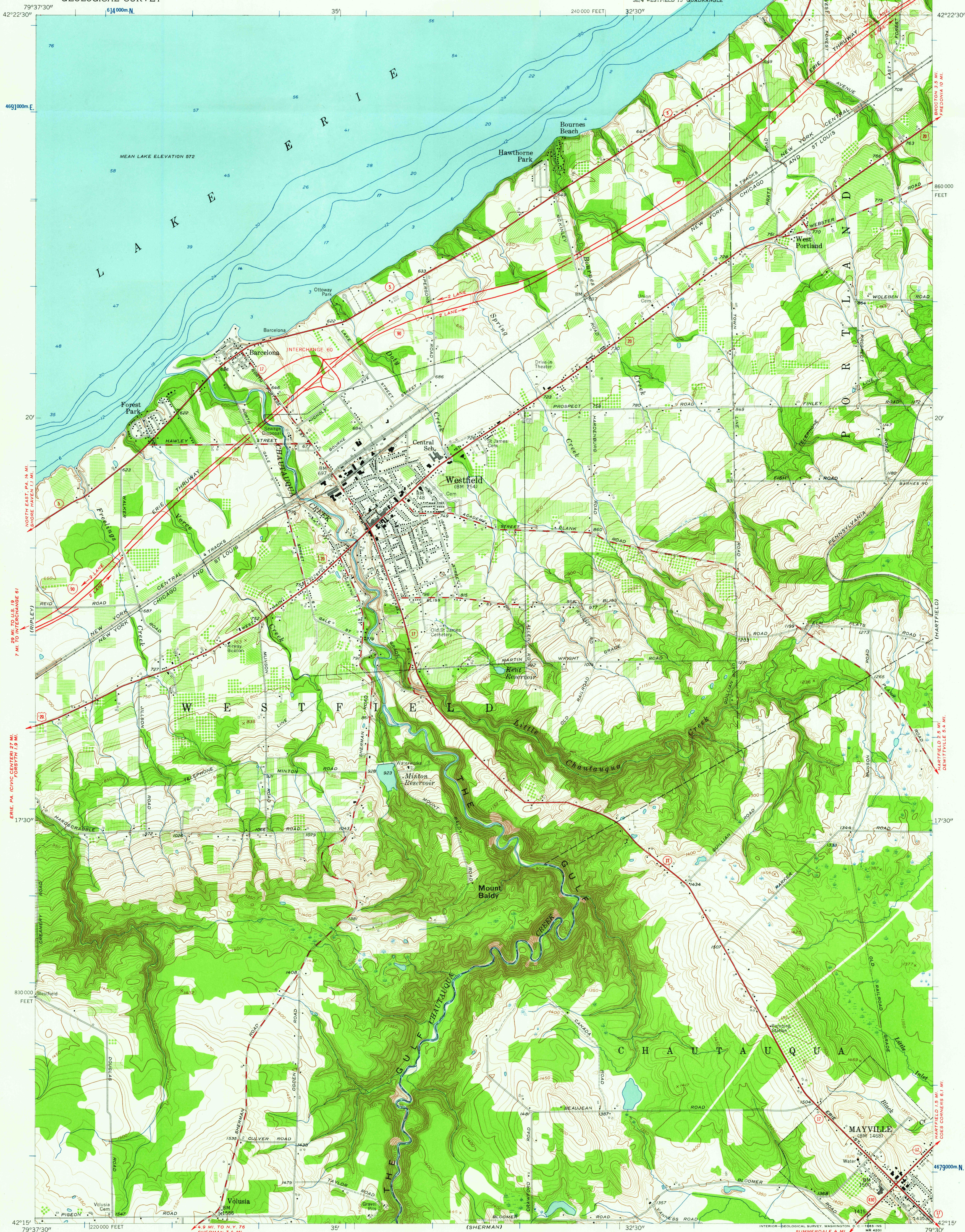


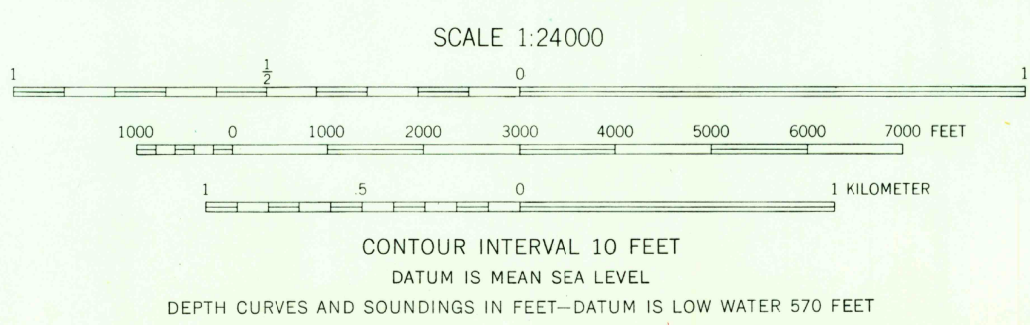
UNITED STATES
DEPARTMENT OF THE INTERIOR
GEOLOGICAL SURVEY

WESTFIELD QUADRANGLE
NEW YORK—CHAUTAUQUA CO.
7.5 MINUTE SERIES (TOPOGRAPHIC)
SE 1/4 WESTFIELD 15' QUADRANGLE



Mapped, edited, and published by the Geological Survey
Control by USGS, USC&GS, and U. S. Lake Survey
Topography from aerial photographs by photogrammetric methods
Aerial photographs taken 1953. Field check 1954
Hydrography compiled from U. S. Lake Survey chart 32 (1953)
Polyconic projection. 1927 North American datum
10,000-foot grid based on New York coordinate system,
west zone
1,000-meter Universal Transverse Mercator grid ticks,
zone 17, shown in blue
Unchecked elevations are shown in brown

APPROXIMATE MEAN
DECLINATION, 1954



USGS
Historical File
Topographic Division



ROAD CLASSIFICATION
Heavy-duty ——— Light-duty ———
Medium-duty ——— Unimproved dirt ———
Interstate Route U. S. Route State Route

WESTFIELD, N. Y.
SE 1/4 WESTFIELD 15' QUADRANGLE
N4215—W7930/7.5

1954

THIS MAP COMPLIES WITH NATIONAL MAP ACCURACY STANDARDS
FOR SALE BY U. S. GEOLOGICAL SURVEY, WASHINGTON 25, D. C.
A FOLDER DESCRIBING TOPOGRAPHIC MAPS AND SYMBOLS IS AVAILABLE ON REQUEST

FEB 12 1963

3190