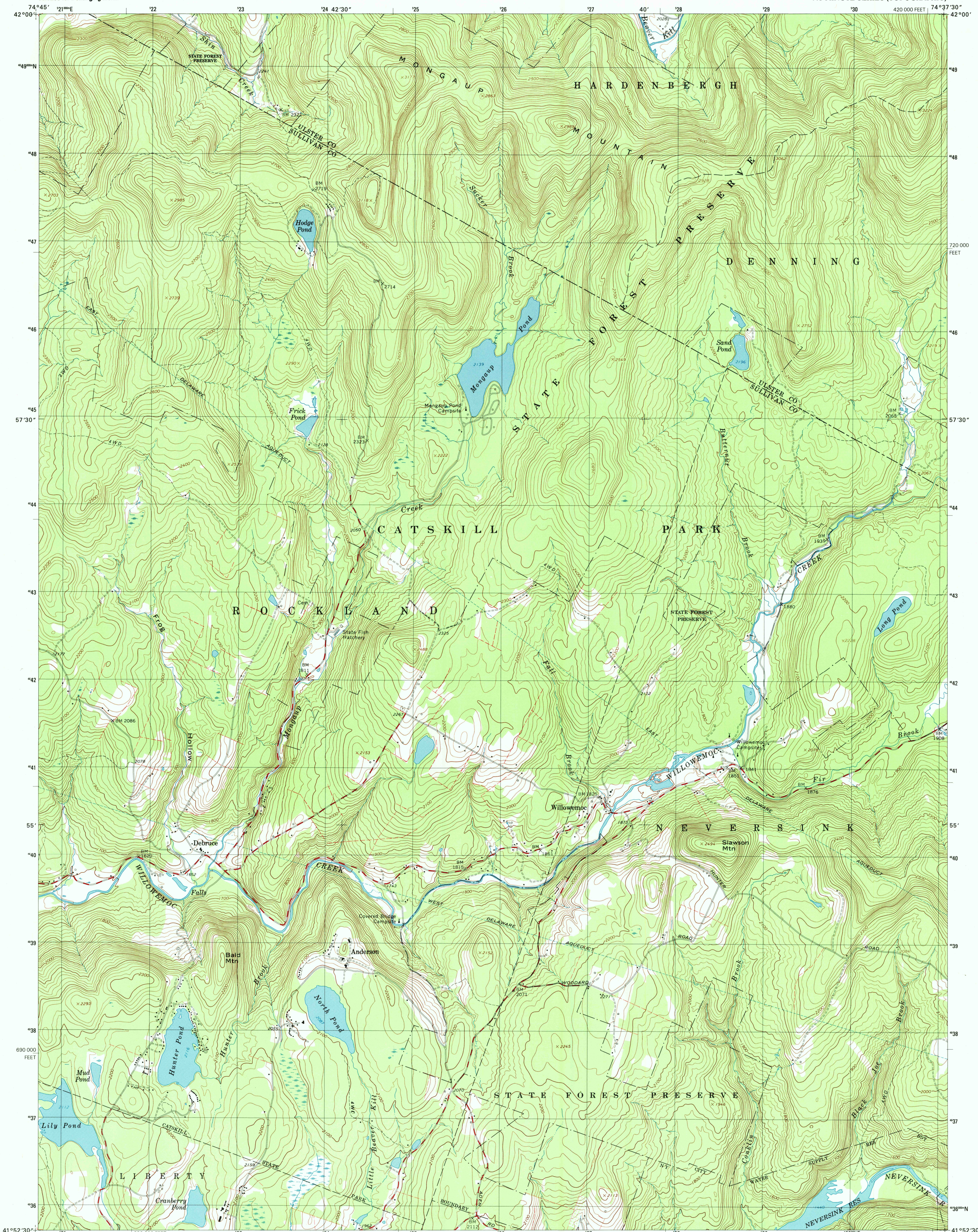




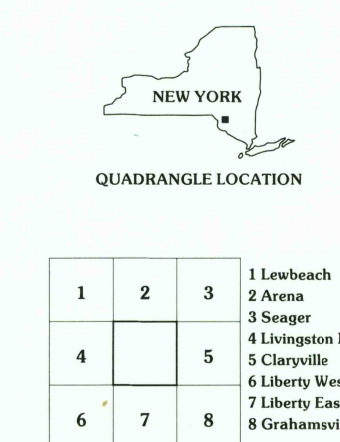
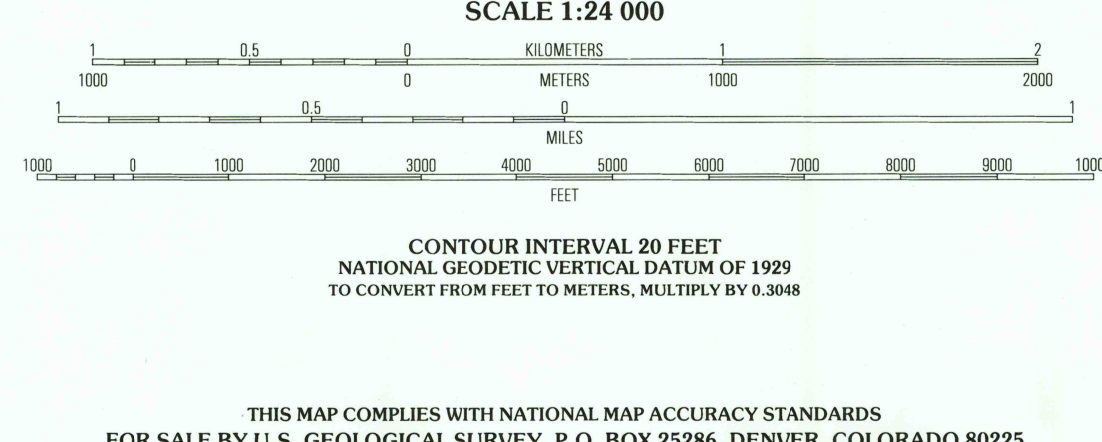
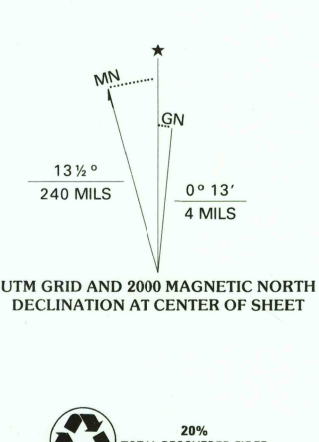
U.S. DEPARTMENT OF THE INTERIOR  
U.S. GEOLOGICAL SURVEY

WILLOWEMOC QUADRANGLE  
NEW YORK  
7.5-MINUTE SERIES (TOPOGRAPHIC)



RECEIVED  
MAY 31 2000  
USGS NAD  
HISTORICAL MAP ARCHIVES

Produced by the United States Geological Survey  
Derived from imagery taken 1963 and other sources. Photospected using imagery taken 1997; no major culture or drainage changes observed. Survey control current as of 1966  
Boundaries revised 1999  
North American Datum of 1927 (NAD 27). Projection and 10 000-foot ticks: New York coordinate system, east zone (transverse Mercator)  
1000-meter Universal Transverse Mercator grid, zone 18  
North American Datum of 1983 (NAD 83) is shown by dashed corner ticks. The values of the shift between NAD 27 and NAD 83 for 7.5-minute intersections are obtainable from National Geodetic Survey NADCON software  
There may be private inholdings within the boundaries of the National or State reservations shown on this map



ROAD CLASSIFICATION		
Primary highway	Light-duty road, hard or hard surface	.....
Secondary highway	Improved surface	.....
Unimproved road	.....	.....
Interstate Route	U.S. Route	State Route

WILLOWEMOC, NY  
1997  
NIMA 6067 1 NW-SERIES V821

