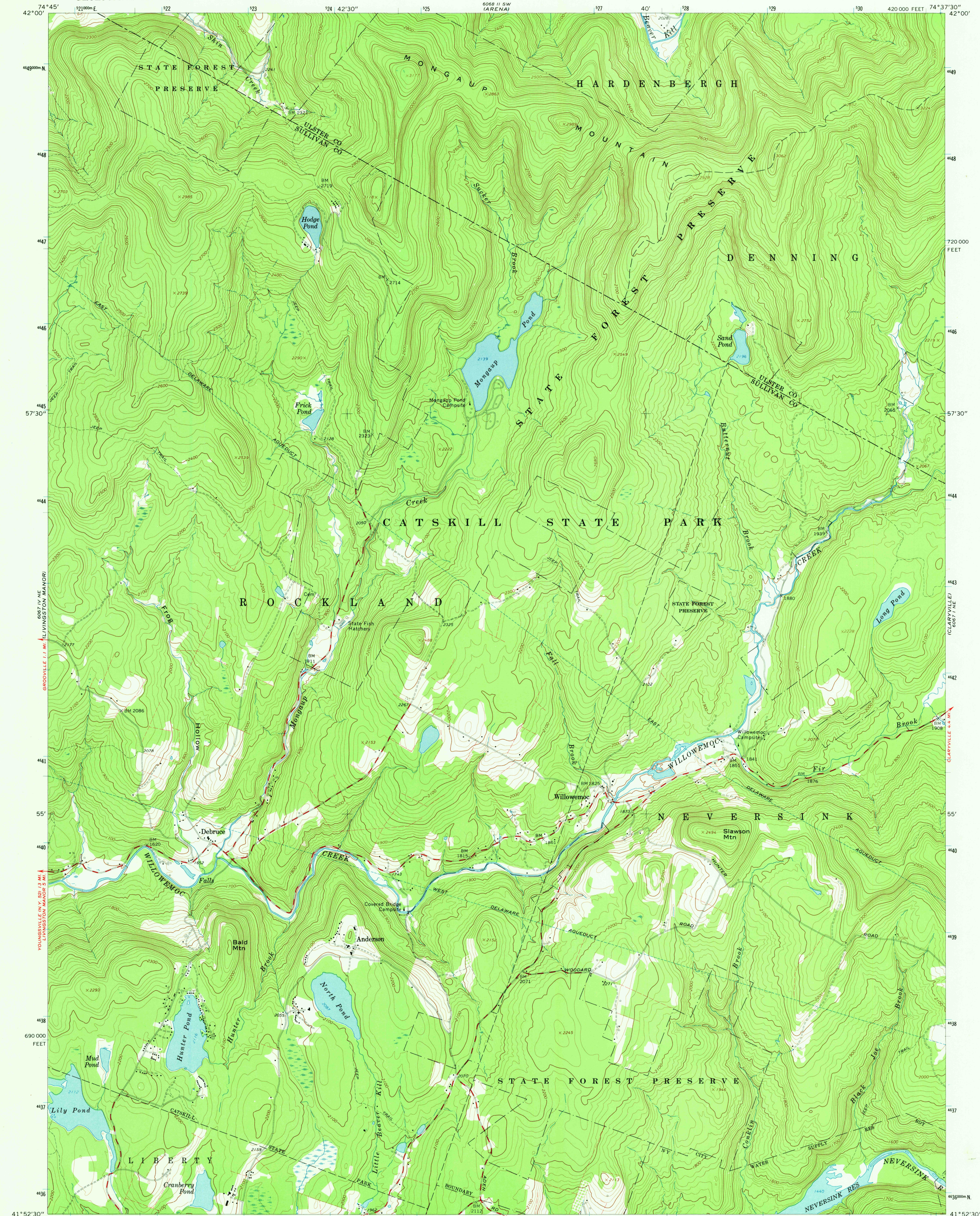


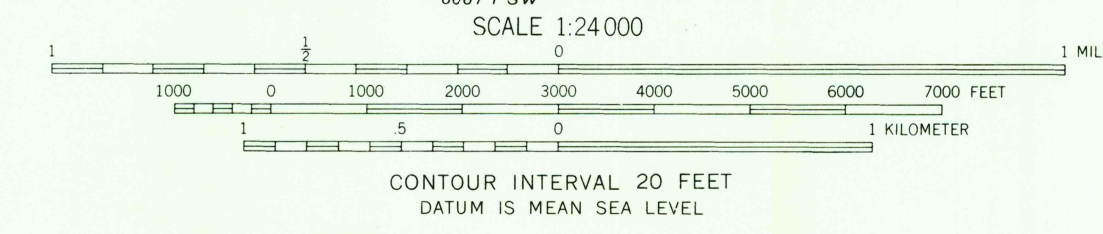
6067 I SE
(LEW BEACH)

6067 I SE
(SEAGER)



Mapped, edited, and published by the Geological Survey
Control by USGS and USC&GS
Topography by photogrammetric methods from aerial
photographs taken 1963. Field checked 1966
Polyconic projection. 1927 North American datum
10,000-foot grid based on New York coordinate system, east zone
1000-meter Universal Transverse Mercator grid ticks,
zone 18, shown in blue
Fine red dashed lines indicate selected fence and field lines where
generally visible on aerial photographs. This information is unchecked

UTM GRID AND 1966 MAGNETIC NORTH
DECLINATION AT CENTER OF SHEET



ROAD CLASSIFICATION
Medium duty ——— Light duty ———
Unimproved dirt ———

USGS
Historical File
Topographic Division

WILLOWMOC, N. Y.
N4152.5—W7437.5/7.5
1966 JUN 5
AMS 6067 I NW—SERIES V821

THIS MAP COMPLIES WITH NATIONAL MAP ACCURACY STANDARDS
FOR SALE BY U.S. GEOLOGICAL SURVEY, WASHINGTON, D. C. 20242
A FOLDER DESCRIBING TOPOGRAPHIC MAPS AND SYMBOLS IS AVAILABLE ON REQUEST

7430