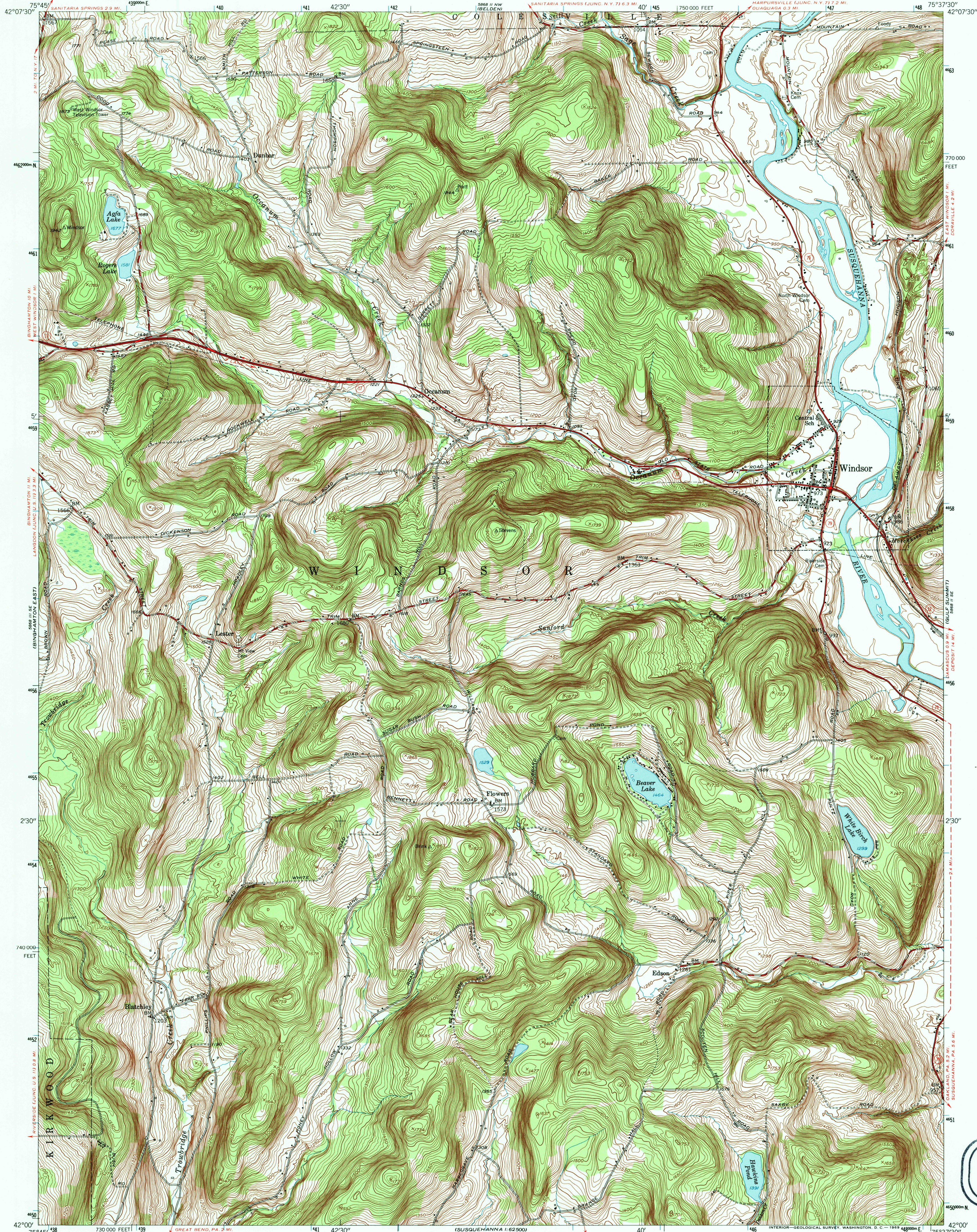
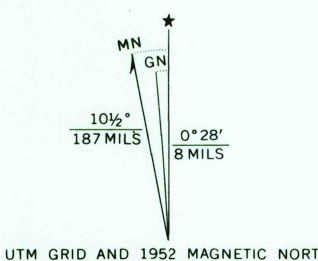


UNITED STATES
DEPARTMENT OF THE INTERIOR
GEOLOGICAL SURVEY

WINDSOR QUADRANGLE
NEW YORK—BROOME CO.
7.5 MINUTE SERIES (TOPOGRAPHIC)
SW 1/4 NINEVEH 15' QUADRANGLE



Mapped, edited, and published by the Geological Survey
Control by USGS, USC&GS, USCE, and New York State Survey
Topography from aerial photographs by multiplex methods
Aerial photographs taken 1948. Field check 1952
Polyconic projection. 1927 North American datum
10,000-foot grid based on New York coordinate system,
central zone
1000-meter Universal Transverse Mercator grid ticks,
zone 18, shown in blue



CONTOUR INTERVAL 10 FEET
DATUM IS MEAN SEA LEVEL



ROAD CLASSIFICATION
Heavy-duty ——— 4 LANE 16 LANE Light-duty ———
Medium-duty ——— 4 LANE 16 LANE Unimproved dirt =====
U. S. Route State Route

WINDSOR, N. Y.
SW 1/4 NINEVEH 15' QUADRANGLE
N4200—W7537.5/7.5

1952

AMS 5868 II SW—SERIES V821

USGS HISTORICAL
MAP ARCHIVES
JAN 24 1996
REC'D FILE COPY

