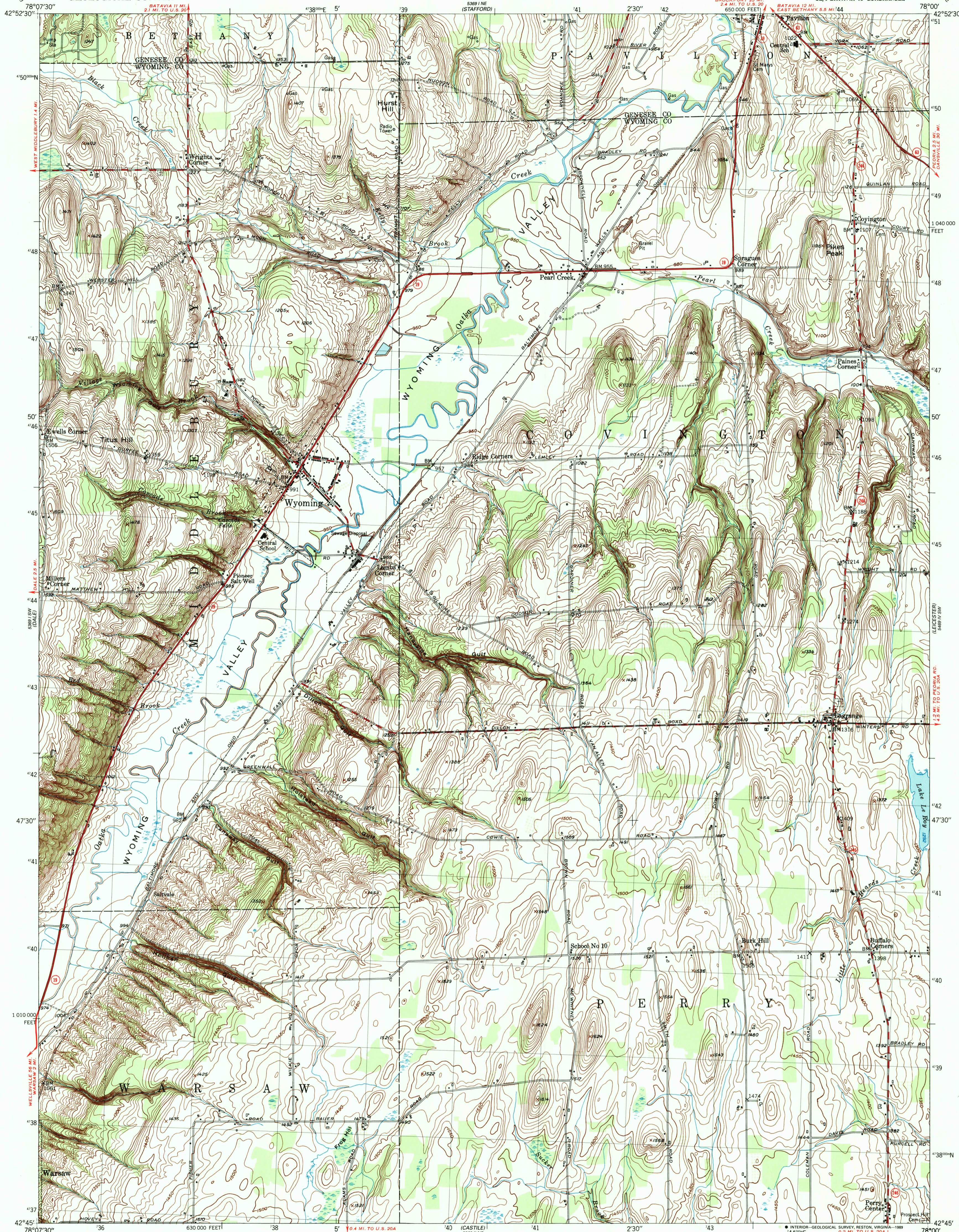


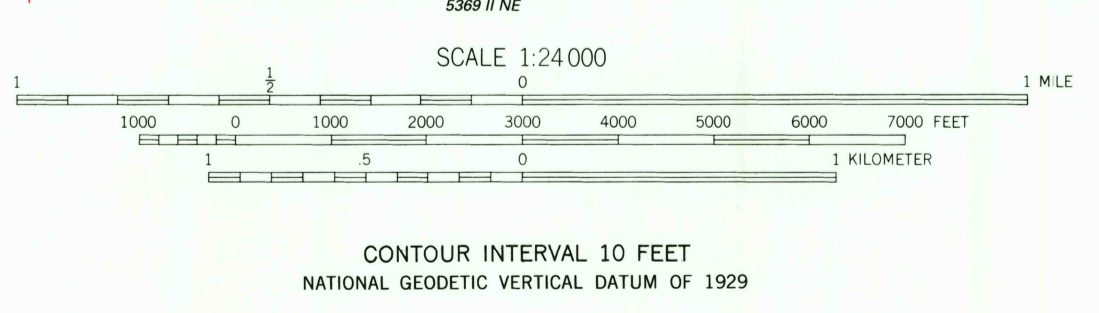
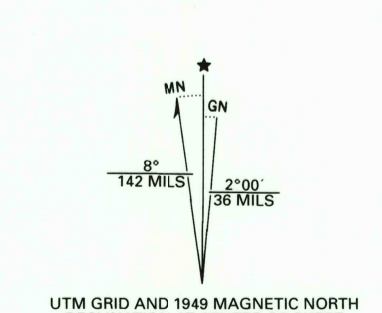
UNITED STATES
DEPARTMENT OF THE INTERIOR
GEOLOGICAL SURVEY

STATE OF NEW YORK
DEPARTMENT OF PUBLIC WORKS

WYOMING QUADRANGLE
NEW YORK
7.5 MINUTE SERIES (TOPOGRAPHIC)
SE/4 BATAVIA 15' QUADRANGLE



Mapped, edited, and published by the Geological Survey
Control by USGS, USC&GS, and USED
Culture and drainage in part compiled by Corps of Engineers,
Dept. of the Army, from aerial photographs taken 1942
Topography by plane-table methods 1949
Polyconic projection. 1927 North American datum
10,000-foot grid based on New York coordinate system,
west zone
1000-meter Universal Transverse Mercator grid, zone 17
To place on the predicted North American Datum 1983
move the projection lines 2 meters south and
22 meters west as shown by dashed corner ticks
Map photoinspected 1976
No major culture or drainage changes observed



ROAD CLASSIFICATION
Heavy-duty 4 LANE 18 LANE Light duty
Medium-duty 4 LANE 18 LANE Unimproved dirt
U. S. Route State Route

WYOMING, N. Y.
SE/4 BATAVIA 15' QUADRANGLE
42078-G1-TF-024

USGS NMO HISTORICAL MAP
AUG 0 2 1989
REC'D FILE COPY

THIS MAP COMPLIES WITH NATIONAL MAP ACCURACY STANDARDS
FOR SALE BY U. S. GEOLOGICAL SURVEY
DENVER, COLORADO 80225, OR RESTON, VIRGINIA 22092
A FOLDER DESCRIBING TOPOGRAPHIC MAPS AND SYMBOLS IS AVAILABLE ON REQUEST

1951
PHOTOINSPECTED 1976
DMA 5369 I SE-SERIES V821