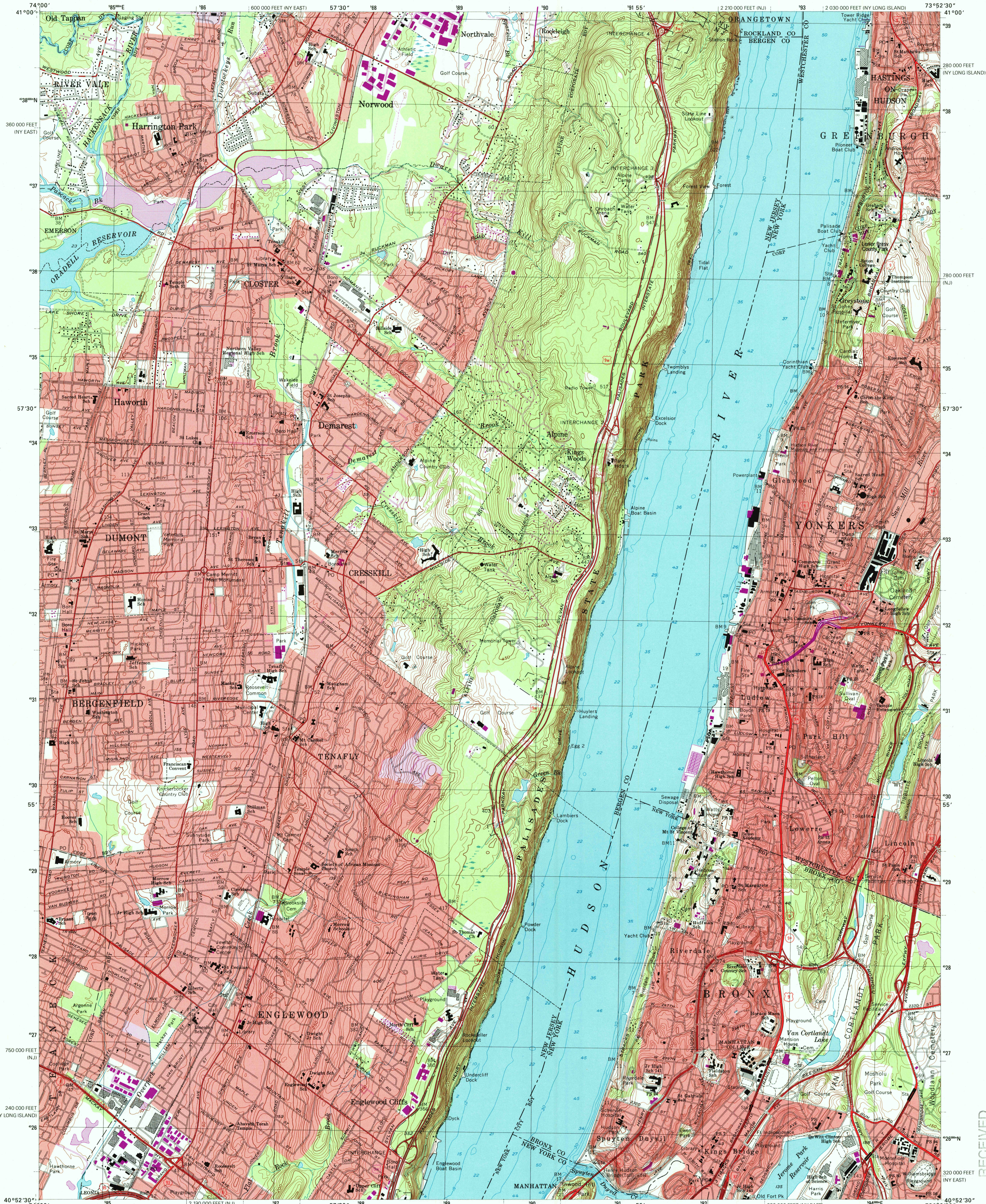




U.S. DEPARTMENT OF THE INTERIOR
U.S. GEOLOGICAL SURVEY

YONKERS QUADRANGLE
NEW YORK-NEW JERSEY
7.5-MINUTE SERIES (TOPOGRAPHIC)

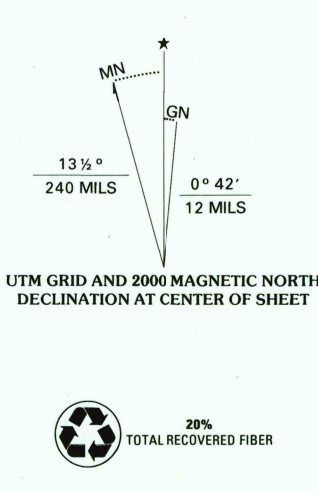


RECEIVED

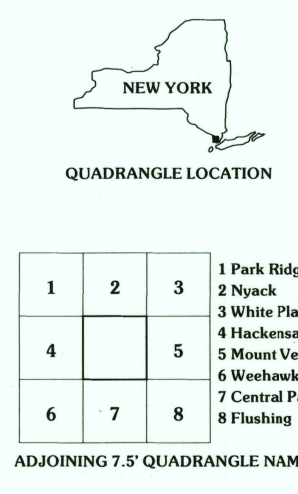
SEP 30 2000

USGS NAD
HISTORICAL MAP ARCHIVES

Produced by the United States Geological Survey
Topography compiled 1966. Planimetry derived from imagery taken 1977 and other sources. Photorevised using imagery dated 1998; no major culture or drainage changes observed. Survey control current as of 1966. Boundaries, other than corporate, revised 2000
North American Datum of 1927 (NAD 27)
Projection: New Jersey coordinate system (transverse Mercator)
10 000-foot ticks: New Jersey coordinate system, and New York coordinate system, east and Long Island zones 1000-meter Universal Transverse Mercator grid, zone 18
North American Datum of 1983 (NAD 83) is shown by dashed corner ticks. The values of the shift between NAD 27 and NAD 83 for 7.5-minute intersections are obtainable from National Geodetic Survey NADCON software
There may be private inholdings within the boundaries of the National or State reservations shown on this map
Information shown in purple may not meet USGS content standards and may conflict with previously mapped contours



SCALE 1:24 000
CONTOUR INTERVAL 10 FEET
NATIONAL GEODETIC VERTICAL DATUM OF 1929
TO CONVERT FROM FEET TO METERS, MULTIPLY BY 0.3048
DEPTH CURVES AND SOUNDINGS IN FEET, DATUM IS MEAN LOWER LOW WATER
THE RELATIONSHIP BETWEEN THE TWO DATUMS IS VARIABLE
MEAN RANGE OF TIDE IS APPROXIMATELY 3.7 FEET
THIS MAP COMPLIES WITH NATIONAL MAP ACCURACY STANDARDS
FOR SALE BY U.S. GEOLOGICAL SURVEY, P.O. BOX 25286, DENVER, COLORADO 80225
A FOLDER DESCRIBING TOPOGRAPHIC MAPS AND SYMBOLS IS AVAILABLE ON REQUEST



ROAD CLASSIFICATION
Primary highway
hard surface
Secondary highway
hard surface
Light-duty road, hard or
improved surface
Unimproved road
Interstate Route
U.S. Route
State Route
YONKERS, NY-NJ
1998
NIMA 6265 IV NW-SERIES V821

