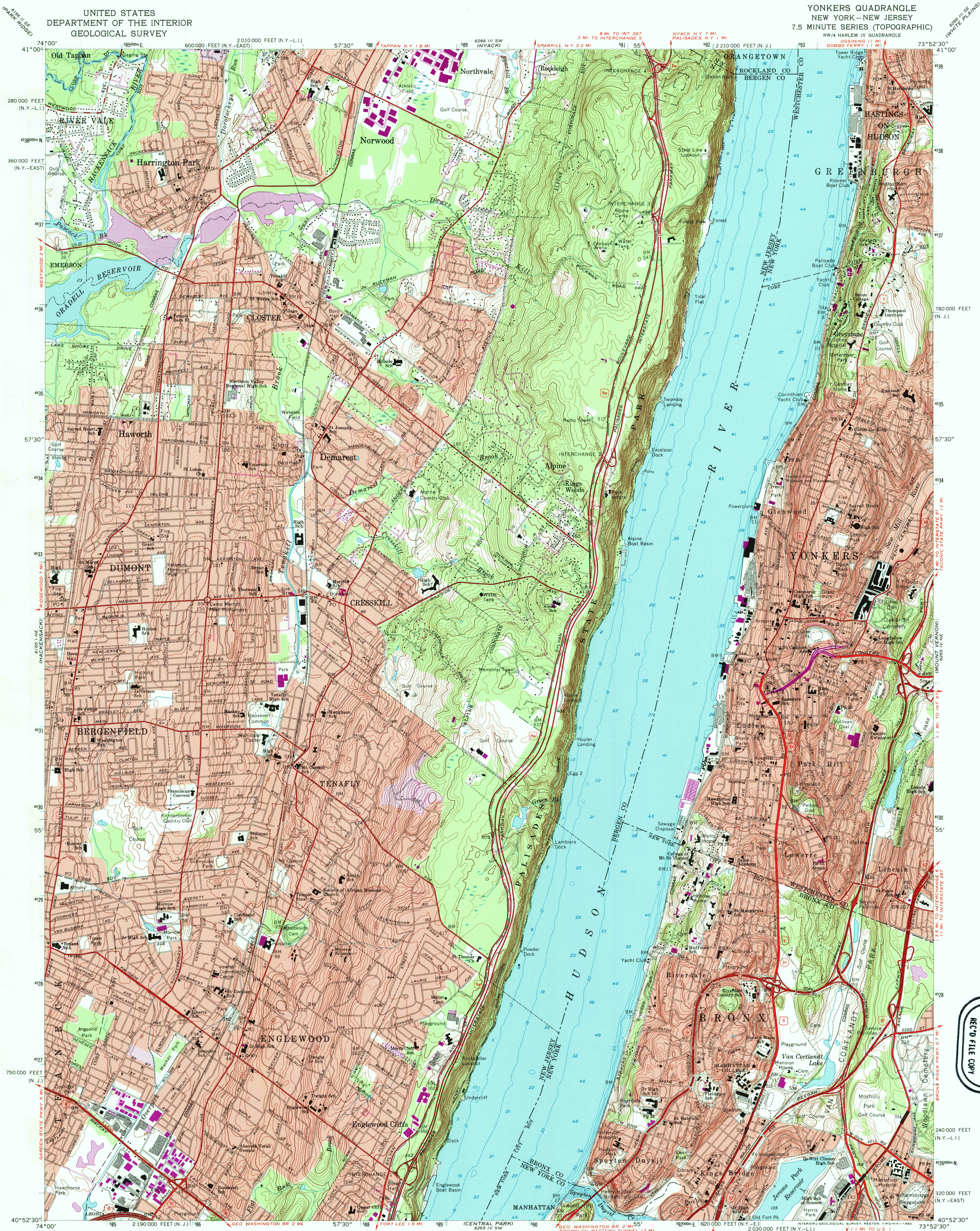


UNITED STATES
DEPARTMENT OF THE INTERIOR
GEOLOGICAL SURVEY

YONKERS QUADRANGLE
NEW YORK-NEW JERSEY
7.5 MINUTE SERIES (TOPOGRAPHIC)



USGS AND HISTORICAL
MAP NOTES
JUL 3 1 1995
REC'D FILE COPY

Mapped, edited, and published by the Geological Survey
New York area revised in cooperation with New York
Department of Transportation
Control by USGS, USC&GS, USCE, New Jersey Geodetic Survey,
and City of New York Board of Estimate and Apportionment
Topography by photogrammetric methods from aerial photographs
taken 1954. Field checked 1956. Revised 1966
Selected hydrographic data compiled from USC&GS Charts 747 and 748
(1966). This information is not intended for navigational purposes
Polyconic projection. 1927 North American datum
10,000-foot grids based on New Jersey coordinate system, and
New York coordinate system, east and Long Island zones
1000-meter Universal Transverse Mercator grid ticks,
zone 18, shown in blue
To place on the predicted North American Datum 1983 move the projection
lines 6 meters south and 35 meters west as shown by dashed corner ticks

UTM GRID AND 1979 MAGNETIC NORTH
DECLINATION AT CENTER OF SHEET
12° 213 MILLS
0° 43' 13 MILLS
This map complies with National Map Accuracy Standards
FOR SALE BY U.S. GEOLOGICAL SURVEY
DENVER, COLORADO 80225, OR RESTON, VIRGINIA 22092
FOLDER DESCRIBING TOPOGRAPHIC MAPS AND SYMBOLS IS AVAILABLE ON REQUEST

SCALE 1:24,000
CONTOUR INTERVAL 10 FEET
NATIONAL GEODETIC VERTICAL DATUM OF 1929
DEPTH CURVES AND SOUNDINGS IN FEET-DATUM IS MEAN LOW WATER
THE RELATIONSHIP BETWEEN THE TWO DATUMS IS VARIABLE
SHORELINE SHOWN REPRESENTS THE APPROXIMATE LINE OF MEAN HIGH WATER
MEAN RANGE OF TIDE IS APPROXIMATELY 3.7 FEET

ROAD CLASSIFICATION
Heavy-duty ——— Light-duty ———
Medium-duty ——— Unimproved dirt ———
Interstate Route U.S. Route State Route
YONKERS, N.Y.-N.J.
NW 1/4 HARLEM 15' QUADRANGLE
N4052.5-W7352.5/7.5
1966
PHOTO REVISOR 1979
AMS 6265 IV NW-SERIES V821

QUADRANGLE LOCATION
Revisions shown in purple compiled from aerial photographs
taken 1977 and other source data. This information
not field checked. Map edited 1979
Purple tint indicates extension of urban areas