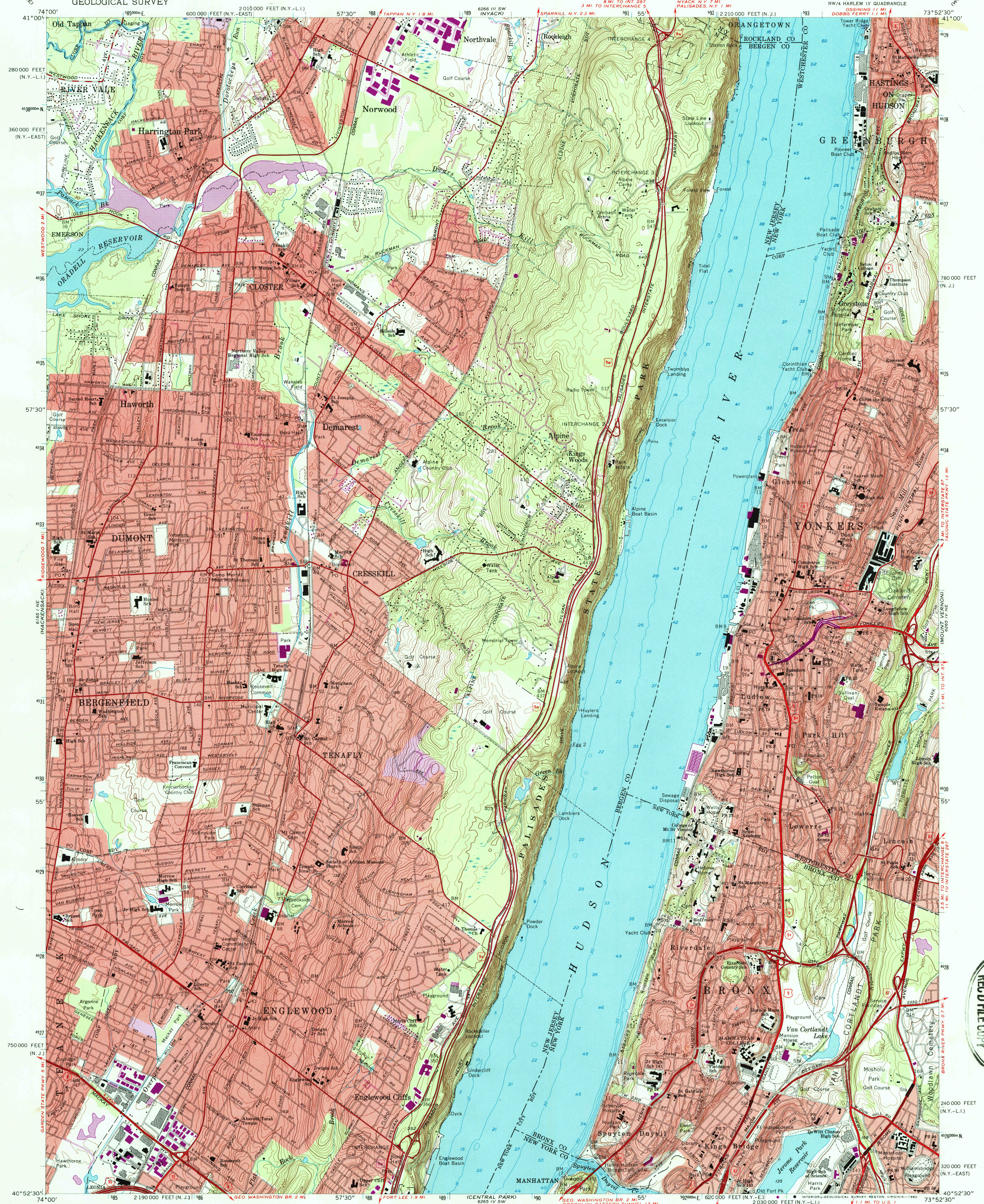


UNITED STATES
DEPARTMENT OF THE INTERIOR
GEOLOGICAL SURVEY

YONKERS QUADRANGLE
NEW YORK-NEW JERSEY
7.5 MINUTE SERIES (TOPOGRAPHIC)



USGS AND HISTORICAL MAP
OCT 16 1986
REC'D FILE COPY

Mapped, edited, and published by the Geological Survey
New York area revised in cooperation with New York
Department of Transportation

Control by USGS, USC&GS, USCE, New Jersey Geodetic Survey,
and City of New York Board of Estimate and Apportionment

Topography by photogrammetric methods from aerial photographs
taken 1954. Field checked 1956. Revised 1966

Selected hydrographic data compiled from US&GS Charts 747 and 748
(1966). This information is not intended for navigational purposes

Polycyclic projection. 1927 North American datum
10,000-foot grids based on New Jersey coordinate system, and
New York coordinate system, east and Long Island zones

1000-meter Universal Transverse Mercator grid ticks,
zone 18, shown in blue

To place on the predicted North American Datum 1983 move the projection
lines 6 meters south and 35 meters west as shown by dashed corner ticks

There may be private inholdings within the boundaries of
the National or State reservations shown on this map
Red tint indicates areas in which only landmark
buildings are shown

SCALE 1:24,000

1 1000 2000 3000 4000 5000 6000 7000 FEET
1 1 2 3 4 5 6 KILOMETER

CONTOUR INTERVAL 10 FEET
NATIONAL GEODETIC VERTICAL DATUM OF 1929
DEPTH CURVES AND SOUNDINGS IN FEET-DATUM IS MEAN LOW WATER
THE RELATIONSHIP BETWEEN THE TWO DATUMS IS VARIABLE
SHORELINE SHOWN REPRESENTS THE APPROXIMATE LINE OF MEAN HIGH WATER
MEAN RANGE OF TIDE IS APPROXIMATELY 1.7 FEET

THIS MAP COMPLIES WITH NATIONAL MAP ACCURACY STANDARDS
FOR SALE BY U.S. GEOLOGICAL SURVEY, RESTON, VIRGINIA 22092
A FOLDER DESCRIBING TOPOGRAPHIC MAPS AND SYMBOLS IS AVAILABLE ON REQUEST

ROAD CLASSIFICATION

Heavy-duty ——— Light-duty ———
Medium-duty ——— Unimproved dirt ———

Interstate Route U.S. Route State Route

YONKERS, N.Y.-N.J.

NW/4 HARLEM 15' QUADRANGLE
N4052.5-W7352.5/7.5

1966
PHOTOREVISED 1979
AMS 6265 IV NW-SERIES V821