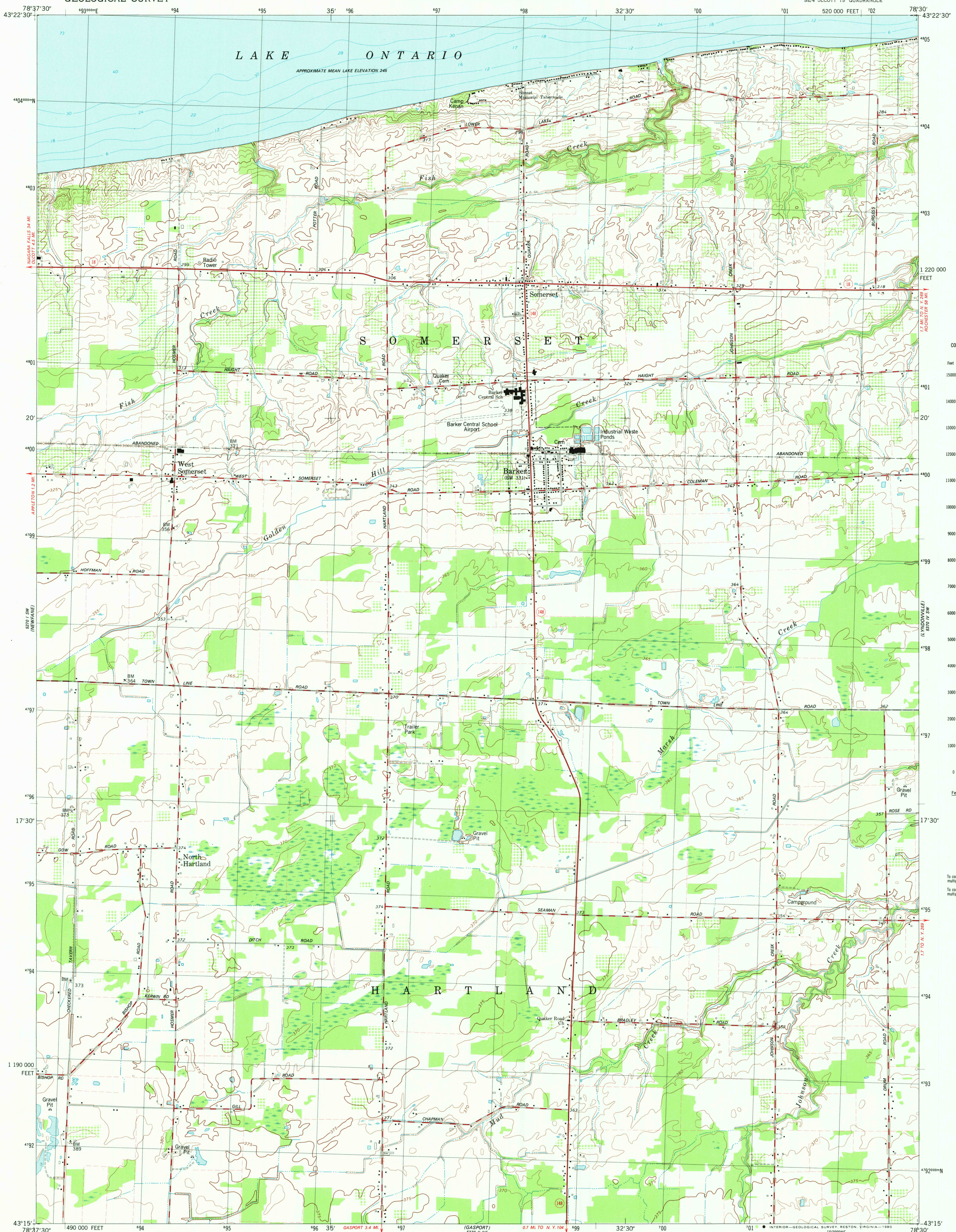


UNITED STATES
DEPARTMENT OF THE INTERIOR
GEOLOGICAL SURVEY

STATE OF NEW YORK
DEPARTMENT OF TRANSPORTATION

BARKER QUADRANGLE
NEW YORK-NIAGARA CO.
7.5 MINUTE SERIES (TOPOGRAPHIC)
SE/4 OLCOTT 15' QUADRANGLE



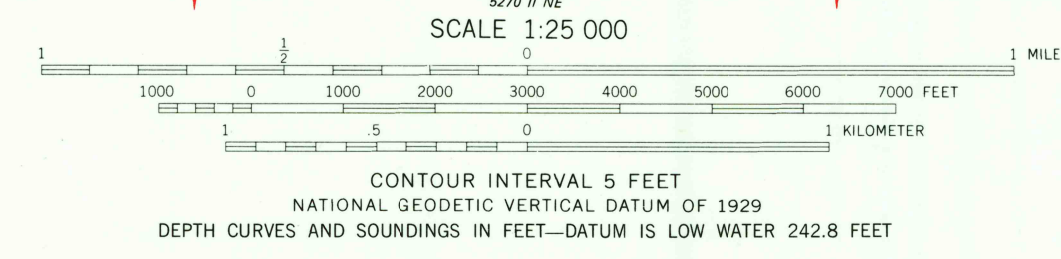
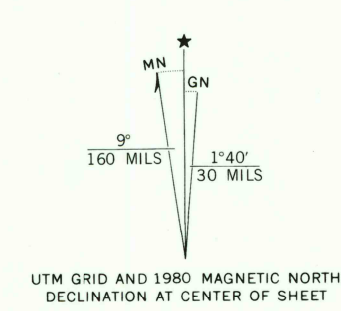
CONVERSION SCALES

Feet	Meters
1500	450
1400	427
1300	406
1200	381
1100	357
1000	335
900	313
800	293
700	274
600	259
500	244
400	229
300	213
200	198
100	100
0	0

To convert feet to meters multiply by .3048
To convert meters to feet multiply by 3.2808

Feet	Meters
1	.3048
2	.6096
3	.9144
4	1.2192
5	1.5240
6	1.8288
7	2.1336
8	2.4384
9	2.7432
10	3.0480

Mapped, edited, and published by the Geological Survey
Control by USGS and NOS/NOAA
Topography by photogrammetric methods from aerial photographs taken 1972. Field checked 1973. Map edited 1980
Supersedes 1:24 000-scale map dated 1965
Selected hydrographic data compiled from NOS chart 14806 (1978)
This information is not intended for navigational purposes
Projection and 10,000-foot grid ticks: New York coordinate system, west zone (transverse Mercator)
1000-meter Universal Transverse Mercator grid, zone 17
1927 North American Datum
To place on the predicted North American Datum 1983 move the projection lines 2 meters south and 21 meters west as shown by dashed corner ticks
Fine red dashed lines indicate selected fence and field lines where generally visible on aerial photographs. This information is unchecked



ROAD CLASSIFICATION

Primary highway, hard surface	Light-duty road, hard or improved surface
Secondary highway, hard surface	Unimproved road
Interstate Route	U. S. Route
	State Route

THIS MAP COMPLIES WITH NATIONAL MAP ACCURACY STANDARDS
FOR SALE BY U. S. GEOLOGICAL SURVEY, RESTON, VIRGINIA 22092
A FOLDER DESCRIBING TOPOGRAPHIC MAPS AND SYMBOLS IS AVAILABLE ON REQUEST

USGS
Historical File
Topographic Division
BARKER, N. Y.
SE/4 OLCOTT 15' QUADRANGLE
N4315-W7830/7.5
1980

DMA 5270 1 SE-SERIES V821

OCT - 3 1980