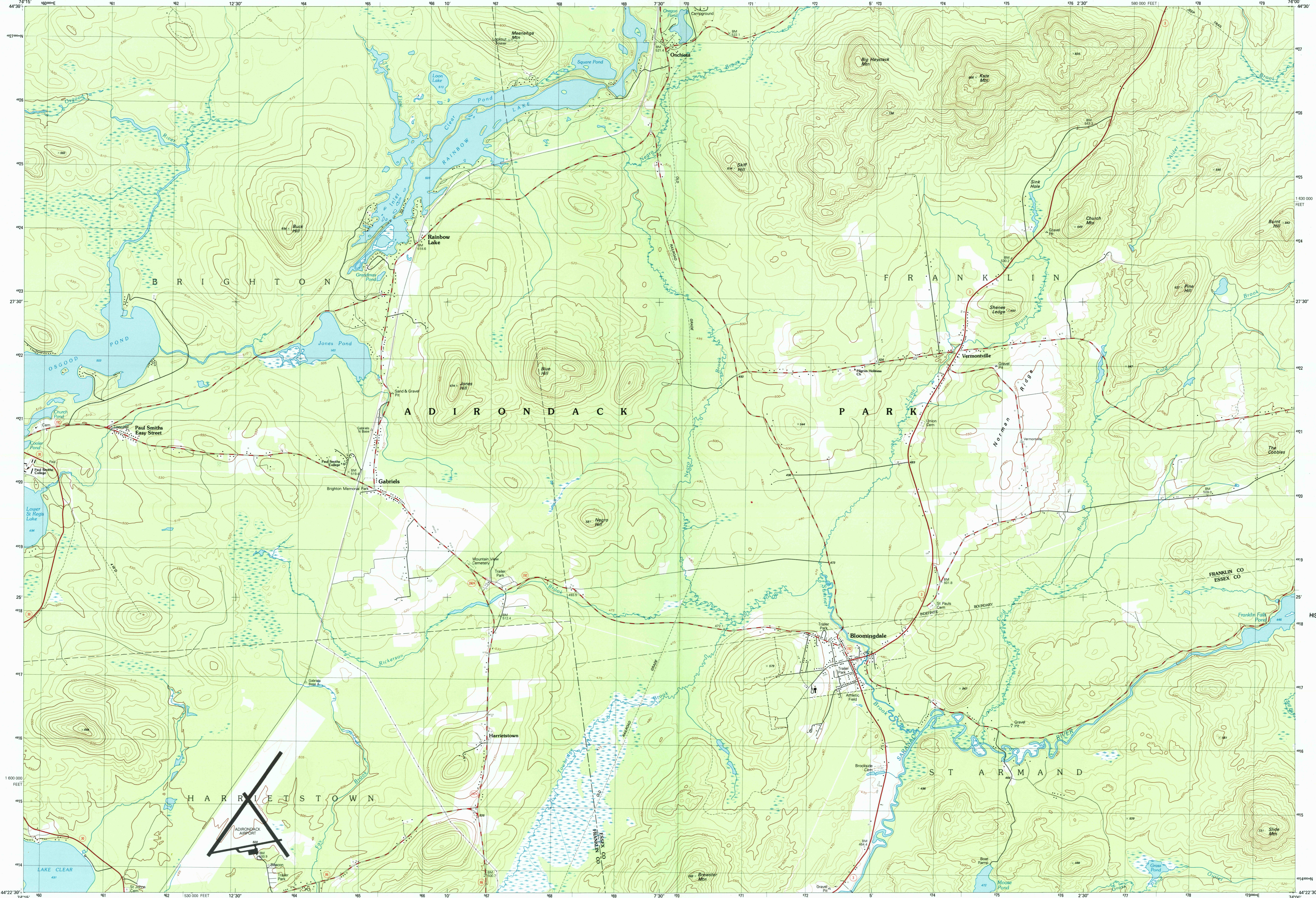


Bloomingdale
NEW YORK
1:25 000-scale metric
topographic map of

7.5 X 15 MINUTE QUADRANGLE
SHOWING

- Contours and elevations in meters
- Highways, roads and other manmade structures
- Water features
- Woodland areas
- Geographic names

U.S. Department of the Interior
U.S. Geological Survey
1999



Produced by the United States Geological Survey
Derived from imagery taken 1976 and other sources
Photorevised using imagery taken 1999; no major culture
or drainage changes observed. Survey control current
as of 1976. Boundaries, other than corporate, revised 2001
North American Datum of 1927 (NAD 27). Projection and
1000-meter grid. Universal Transverse Mercator, zone 18
10 000-foot ticks. New York coordinate system, east zone
North American Datum of 1983 (NAD 83) is shown by dashed
corner ticks. The values of the shift between NAD 27 and
NAD 83 for 7.5-minute intersections are obtainable from
National Geodetic Survey NADCON software.
There may be private inholdings within the boundaries of
the National or State reservations shown on this map.

CONTOUR INTERVAL 10 METERS
SUPPLEMENTARY CONTOUR INTERVAL 5 METERS
NATIONAL GEODETIC VERTICAL DATUM OF 1929
CONTOUR ELEVATIONS SHOWN TO THE NEAREST 0.1 METER
OTHER ELEVATIONS SHOWN TO THE NEAREST METER

THIS MAP COMPLIES WITH NATIONAL MAP ACCURACY STANDARDS

Meters	Feet
1	3.2808
2	6.5617
3	9.8425
4	13.1234
5	16.4042
6	19.6850
7	22.9659
8	26.2467
9	29.5276
10	32.8084

To convert meters to feet multiply by 3.2808
To convert feet to meters multiply by 0.3048

UTM grid convergence (GN) and 2011 magnetic declination (MN) at center of map
Diagram is approximate.

ADJOINING MAPS
1 Meacham Lake (7.5)
2a Debar Mtn (7.5)
2b Loom Lake (7.5)
3 Alder Brook (7.5)
4 Sable Rock Mtn
5 Wilmington
6 Upper Saranac Lake
7 Saranac Lake
8 Lake Placid

RECEIVED
MAY 31 2001

ISBN 0-607-96446-4
9 780607 964462

HISTORICAL MAP ARCHIVES

Topographic Map Symbols

Primary highway, hard surface	—+—+—+—+—+—+—+—+—+—
Secondary highway, hard surface	—+—+—+—+—+—+—+—+—+—
Light-duty road, hard or improved surface	—+—+—+—+—+—+—+—+—+—
Unimproved road, trail	—+—+—+—+—+—+—+—+—+—
Route marker: Interstate, U.S., State	—+—+—+—+—+—+—+—+—+—
Railroad: standard gauge, narrow gauge	—+—+—+—+—+—+—+—+—+—
Bridge: drawbridge	—+—+—+—+—+—+—+—+—+—
Footbridge; overpass; underpass	—+—+—+—+—+—+—+—+—+—
Built-up area: only selected landmark buildings shown	—+—+—+—+—+—+—+—+—+—
House; barn; church; school; large structure	—+—+—+—+—+—+—+—+—+—
Boundary:	—+—+—+—+—+—+—+—+—+—
National, with monument	—+—+—+—+—+—+—+—+—+—
State	—+—+—+—+—+—+—+—+—+—
County, parish	—+—+—+—+—+—+—+—+—+—
Civil township, precinct, district	—+—+—+—+—+—+—+—+—+—
Incorporated city, village, town	—+—+—+—+—+—+—+—+—+—
National or State reservation; small park	—+—+—+—+—+—+—+—+—+—
Land grant with monument; found section corner	—+—+—+—+—+—+—+—+—+—
U.S. public lands survey: range, township, section	—+—+—+—+—+—+—+—+—+—
Range, township, section line: location approximate	—+—+—+—+—+—+—+—+—+—
Fence or field line	—+—+—+—+—+—+—+—+—+—
Power transmission line, located tower	—+—+—+—+—+—+—+—+—+—
Dam; dam with lock	—+—+—+—+—+—+—+—+—+—
Cemetery: grave	—+—+—+—+—+—+—+—+—+—
Campground; picnic area; U.S. location monument	—+—+—+—+—+—+—+—+—+—
Windmill; water well; spring	—+—+—+—+—+—+—+—+—+—
Mine shaft; prospect; adit or cove	—+—+—+—+—+—+—+—+—+—
Control: horizontal station; vertical station; spot elevation	—+—+—+—+—+—+—+—+—+—
Contours: index; intermediate; supplementary; depression	—+—+—+—+—+—+—+—+—+—
Distorted surface: strip mine, lava; sand	—+—+—+—+—+—+—+—+—+—
Bathymetric contours: index; intermediate	—+—+—+—+—+—+—+—+—+—
Perennial lake and stream; intermittent lake and stream	—+—+—+—+—+—+—+—+—+—
Rapids; large and small; falls, large and small	—+—+—+—+—+—+—+—+—+—
Swamp; marsh	—+—+—+—+—+—+—+—+—+—
Submerged marsh; land subject to controlled inundation	—+—+—+—+—+—+—+—+—+—
Woodland; overland tree	—+—+—+—+—+—+—+—+—+—
Scrub; mangrove	—+—+—+—+—+—+—+—+—+—
Orchard; vineyard	—+—+—+—+—+—+—+—+—+—

A pamphlet describing topographic maps is available on request

FOR SALE BY U.S. GEOLOGICAL SURVEY
P.O. BOX 25286, DENVER, COLORADO 80225

1999