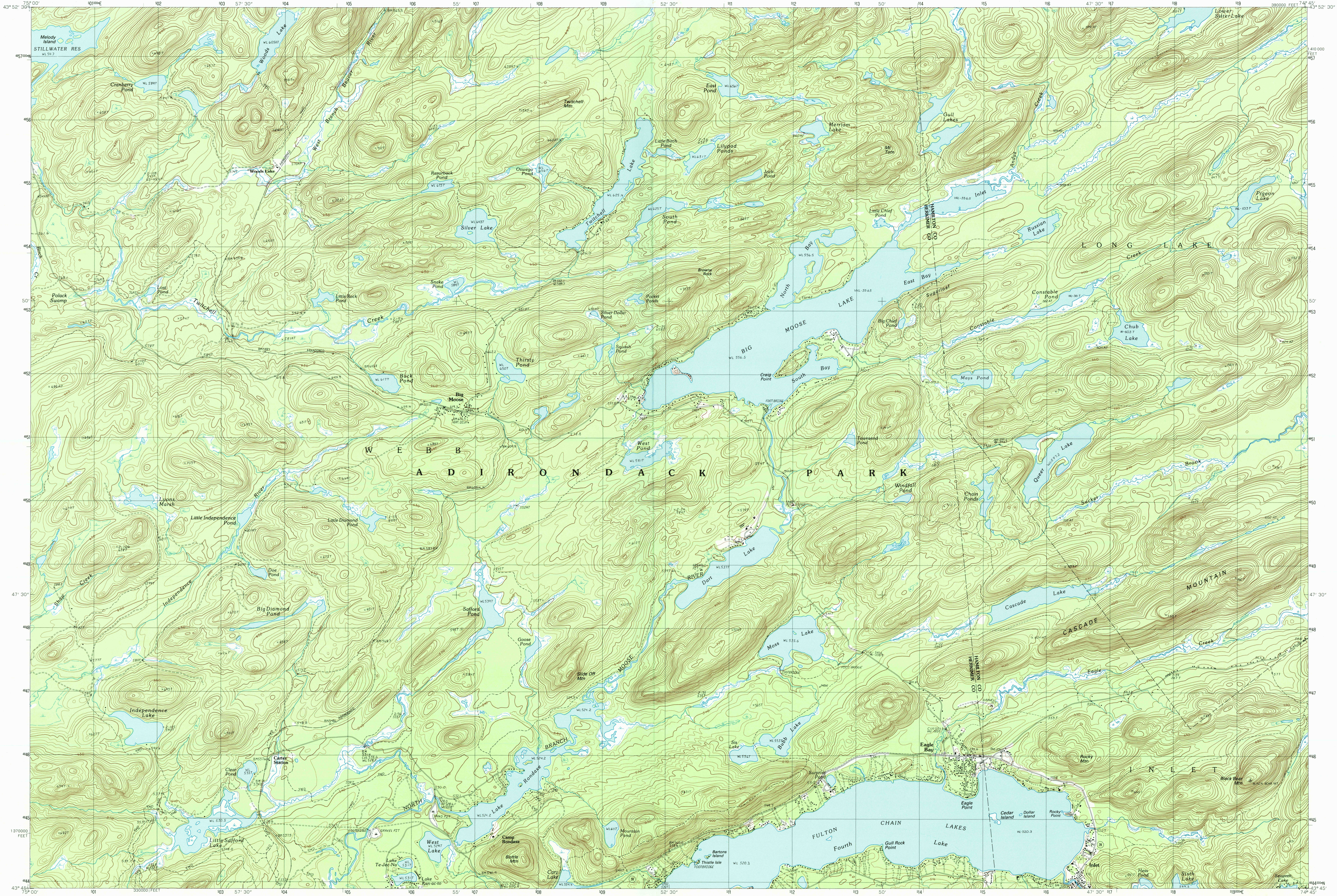


EAGLE BAY, NEW YORK

7.5 X 15 MINUTE SERIES (TOPOGRAPHIC)



Eagle Bay NEW YORK

1:25 000-scale metric
topographic map

7.5 X 15 MINUTE QUADRANGLE SHOWING

- Contours and elevations in meters
- Highways, roads and other manmade structures
- Water features
- Woodland areas
- Geographic names

GEOLOGICAL SURVEY
PROVISIONAL EDITION 1989

PRODUCED BY THE UNITED STATES GEOLOGICAL SURVEY CONTROL BY AERIAL PHOTOGRAPHS TAKEN 1981-82 FIELD CHECKED 1985 MAP EDITED 1989 PROJECTION UNIVERSAL TRANSVERSE MERCATOR GRID 100-METER UNIVERSAL TRANSVERSE MERCATOR ZONE 18 18000-FOOT STATE GRID TICKS NEW YORK, EAST ZONE 1989 MAGNETIC NORTH DECLINATION 1905 EAST UTM GRID DECLINATION 1905 WEST VERTICAL DATUM NATIONAL GEODETIC DATUM OF 1983 HORIZONTAL DATUM 1983 NORTH AMERICAN DATUM To place on the predicted North American Datum of 1983, move the projection lines as shown by dashed corner ticks (2 meters south and 30 meters west). There may be private inholdings within the boundaries of any Federal or State reservations shown on this map. No distinction made between houses, barns, and other buildings.

CONTOUR INTERVAL 6 METERS
CONTOUR AND FIELD ESTABLISHED ELEVATIONS SHOWN TO THE NEAREST 0.1 METER OTHER ELEVATIONS SHOWN TO THE NEAREST METER

THIS MAP COMPLIES WITH NATIONAL MAP ACCURACY STANDARDS

CONVERSION TABLE		ADJOINING MAPS		
Meters	Feet	1	2	3
1	3.2808			
2	6.5617			
3	9.8425			
4	13.1234			
5	16.4042			
6	19.6850			
7	22.9659			
8	26.2467			
9	29.5276			
10	32.8084			

To convert meters to feet multiply by 3.2808
To convert feet to meters multiply by 0.3048

1	Stillwater
2	Boomer River
3	Forked Lake
4	Number Four
5	Sagette Lake
6	Thendara
7	Old Forge
8	Walden Mtn



ROAD LEGEND

Improved Road
Unimproved Road
Trail

○ Interstate Route □ U.S. Route ○ State Route

PROVISIONAL MAP
Produced from original manuscript drawings. Information shown as of date of photography.

RECEIVED
- 2002
USGS/NM
HISTORICAL MAP ARCHIVES