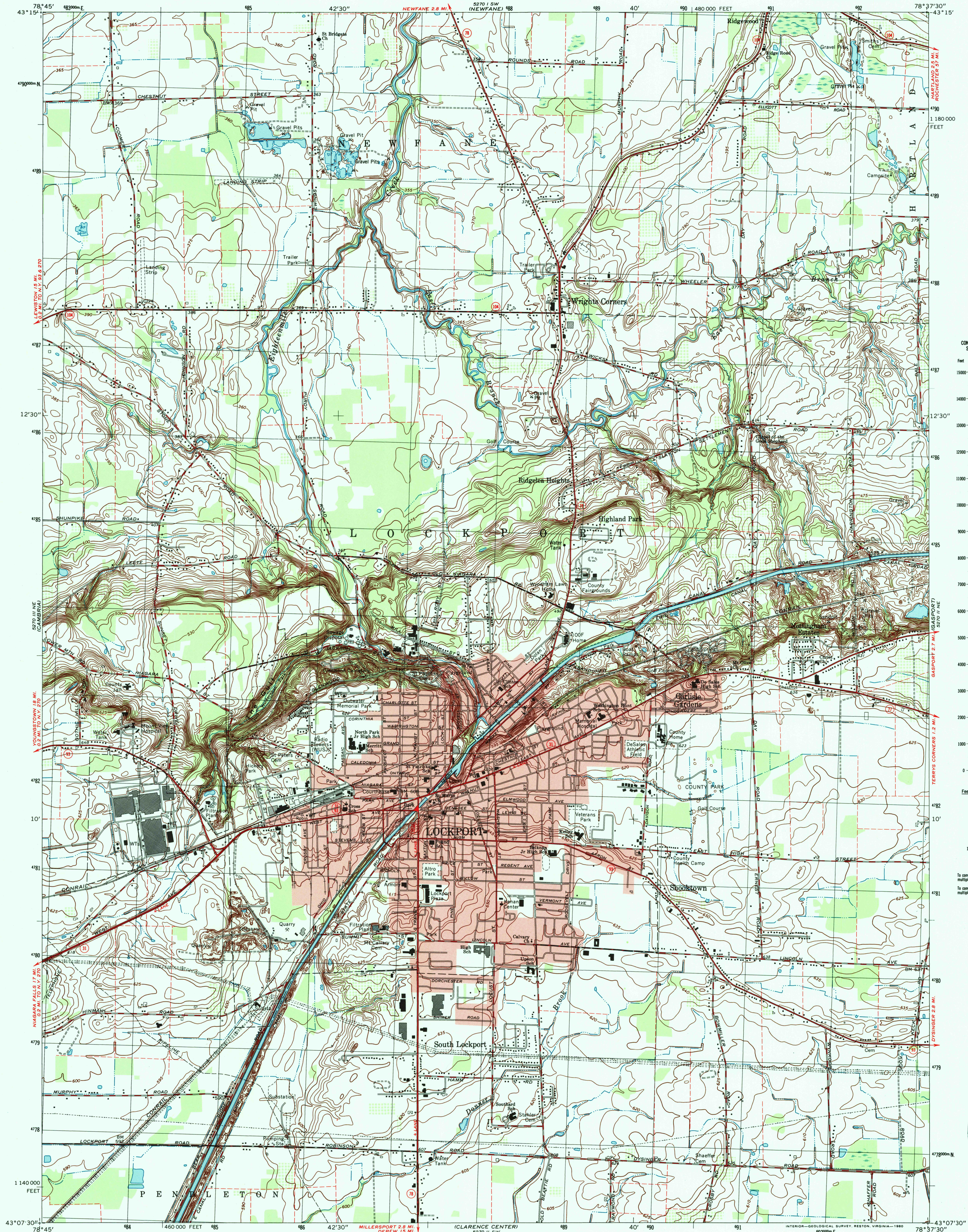


UNITED STATES
DEPARTMENT OF THE INTERIOR
GEOLOGICAL SURVEY

STATE OF NEW YORK
DEPARTMENT OF TRANSPORTATION

LOCKPORT QUADRANGLE
NEW YORK—NIAGARA CO.
7.5 MINUTE SERIES (TOPOGRAPHIC)
NW/4 LOCKPORT 15' QUADRANGLE



CONVERSION SCALES

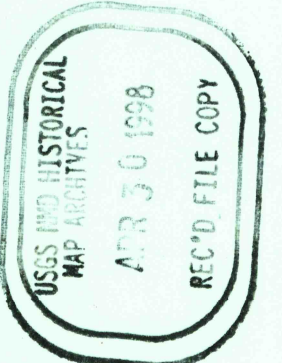
Feet	Meters
15000	4500
14000	4000
13000	3500
12000	3000
11000	2500
10000	2000
9000	1500
8000	1000
7000	500
6000	0
5000	0
4000	0
3000	0
2000	0
1000	0
0	0

Feet Meters

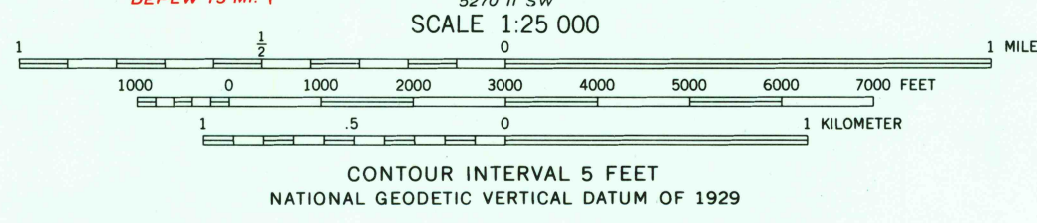
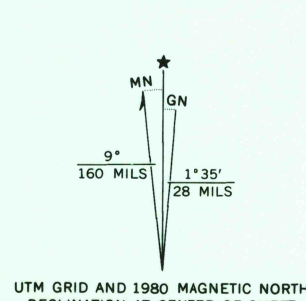
1	3048
2	6096
3	9144
4	12192
5	15240
6	18288
7	21336
8	24384
9	27432
10	30480

To convert feet to meters
multiply by .3048

To convert meters to feet
multiply by 3.2808



Mapped, edited, and published by the Geological Survey
Control by USGS and NOS/NOAA
Topography by photogrammetric methods from aerial
photographs taken 1972. Field checked 1973. Map edited 1980
Supersedes 1:24 000-scale map dated 1965
Projection and 10,000-foot grid ticks: New York coordinate
system, west zone (transverse Mercator)
1000-meter Universal Transverse Mercator grid, zone 17
1927 North American datum
To place on the predicted North American Datum 1983
move the projection lines 2 meters south and
20 meters west as shown by dashed corner ticks
Fine red dashed lines indicate selected fence and field lines where
generally visible on aerial photographs. This information is unchecked
Red tint indicates areas in which only landmark buildings are shown



ROAD CLASSIFICATION

Primary highway, hard surface	Light-duty road, hard or improved surface
Secondary highway, hard surface	Unimproved road
Interstate Route	U. S. Route
	State Route

LOCKPORT, N. Y.
NW/4 LOCKPORT 15' QUADRANGLE
N4307.5—W7837.5/7.5
1980
DMA 5270 II NW—SERIES V821

THIS MAP COMPLIES WITH NATIONAL MAP ACCURACY STANDARDS
FOR SALE BY U. S. GEOLOGICAL SURVEY
DENVER, COLORADO 80225, OR RESTON, VIRGINIA 22092
A FOLDER DESCRIBING TOPOGRAPHIC MAPS AND SYMBOLS IS AVAILABLE ON REQUEST

