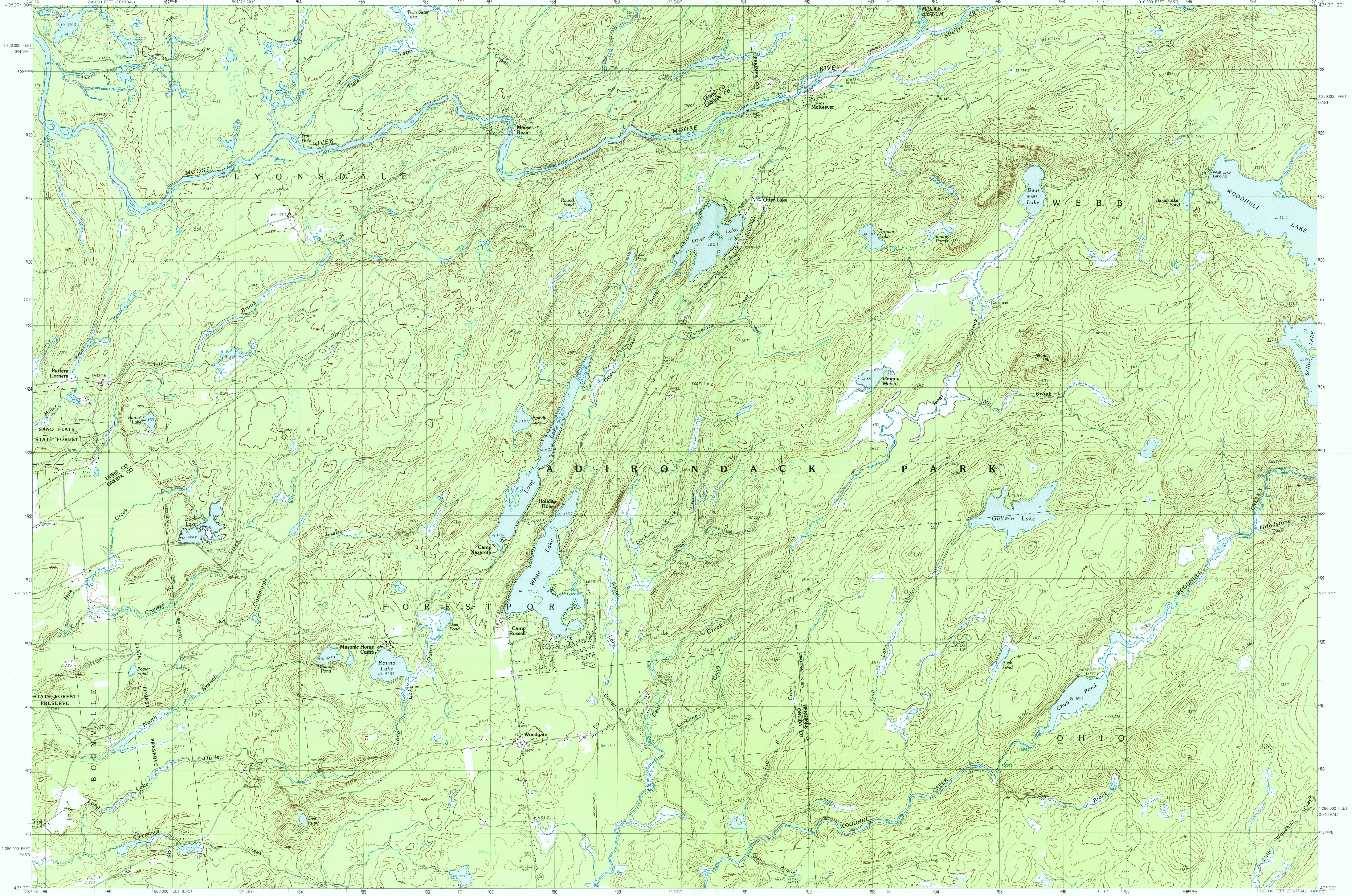


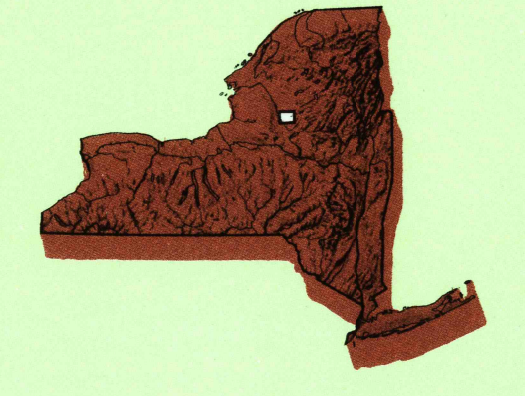
MC KEEVER, NEW YORK

7.5 X 15 MINUTE SERIES (TOPOGRAPHIC)



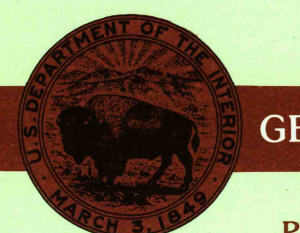
McKeever NEW YORK

1:25 000-scale metric topographic map



7.5 X 15 MINUTE QUADRANGLE SHOWING

- Contours and elevations in meters
- Highways, roads and other manmade structures
- Water features
- Woodland areas
- Geographic names



GEOLOGICAL SURVEY

PROVISIONAL EDITION 1989

PRODUCED BY THE UNITED STATES GEOLOGICAL SURVEY CONTROL BY... USGS AND NOS/NOAA COMPILED FROM AERIAL PHOTOGRAPHS TAKEN... 1981-82 FIELD CHECKED... 1983, MAP EDITED... 1989 PROJECTION... UNIVERSAL TRANSVERSE MERCATOR GRID... 1000-METER UNIVERSAL TRANSVERSE MERCATOR... ZONE 18 10,000-FOOT STATE GRID TICKS... NEW YORK EAST AND CENTRAL ZONES UTM GRID DECLINATION... 0°05' WEST 1983 MAGNETIC NORTH DECLINATION... 13°30' WEST VERTICAL DATUM... NATIONAL GEODETIC VERTICAL DATUM OF 1929 HORIZONTAL DATUM... 1927 NORTH AMERICAN DATUM To place on the predicted North American Datum of 1983, move the projection lines as shown by dashed corner ticks (3 meters south and 30 meters west) There may be private inholdings within the boundaries of any Federal or State reservations shown on this map No distinction made between houses, barns, and other buildings

CONTOUR INTERVAL 6 METERS

CONTROL AND FIELD ESTABLISHED ELEVATIONS SHOWN TO THE NEAREST 0.1 METER OTHER ELEVATIONS SHOWN TO THE NEAREST METER

THIS MAP COMPLIES WITH NATIONAL MAP ACCURACY STANDARDS

FOR SALE BY U.S. GEOLOGICAL SURVEY P.O. BOX 25286, DENVER, COLORADO 80225

CONVERSION TABLE

Meters	Feet
1	3.2808
2	6.5617
3	9.8425
4	13.1234
5	16.4042
6	19.6850
7	22.9659
8	26.2467
9	29.5275
10	32.8084

To convert meters to feet multiply by 3.2808
To convert feet to meters multiply by 0.3048

ADJOINING MAPS

1	2	3
4	5	6
7	8	9

1 Birmingham (7.5)
2 Thendara
3 Old Forge
4 Port Leyden (7.5)
5 Homestead Lake
6 Boonville (7.5)
7 Fairport (7.5)
8 North Wilmar (7.5)
9 Morehouseville



ROAD LEGEND

- Improved Road
- Unimproved Road
- Trail
- Interstate Route
- U. S. Route
- State Route

PROVISIONAL MAP Produced from original manuscript drawings. Information shown as of date of photography.

RECEIVED DEC 31 2000 USGS/AMNH HISTORICAL MAP ARCHIVES

MC KEEVER, NEW YORK PROVISIONAL EDITION 1989

43075-E1-TM-025

SCALE 1:25 000

1 CENTIMETER ON THE MAP REPRESENTS 250 METERS ON THE GROUND

CONTOUR INTERVAL 6 METERS



INTERIOR- GEOLOGICAL SURVEY, RESTON, VIRGINIA-1989

