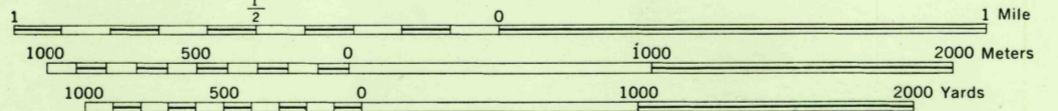


Prepared under the direction of the Chief of Engineers by the Army Map Service (AM), U. S. Army, Washington, D. C. Copied in 1946 from New York, 1:31,680, AMS, Sheet 5769 III NW, 1943. Original map compiled by USGS and TVA from wide angle aerial photography by stereophotogrammetric methods. Aerial photography for TVA, 1942. Horizontal and vertical control by USCGS and TVA. Scale changed and marginal data revised, 1946. Map field checked. This map complies with the national standard map accuracy requirements. Universal Transverse Mercator Grid added, 1945.

LEGEND

ROAD DATA 1943
In developed areas, only through roads are classified.

Hard surface, heavy duty road, more than two lanes wide	Loose surface, graded, dry-weather road
Hard surface, heavy duty road, two lanes wide; Federal route marker	Trail; dirt road
Secondary, hard surface, all-weather road, two lanes wide; State route marker	Railroad in street; Carline in street
Under construction	Abandoned
Standard gauge	Single track
Double track	Double track
Narrow gauge	Single track
Double track	Double track
Single track carline	Double track carline
BOUNDARIES	
International	Mine
State	Horizontal control pt.
County (with monument)	Bench mark
Town	Spot elevation, feet
Reservation	Woods
Military reservation	Brushwood
School; Church	Woods-brushwood
Cemetery	Orchard
Churchyard	Vineyard
	Man-made shoreline
	Intermittent lake
	Horizontal control pt.
	Intermittent stream
	Dam
	Rapids; Falls
	Large rapids and falls
	Swamp, marsh
	Rocks awash at low tide
	Wharf, pier
	Man-made shoreline

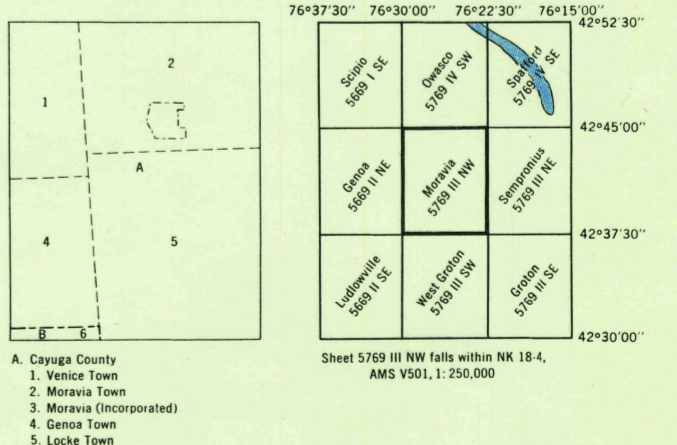
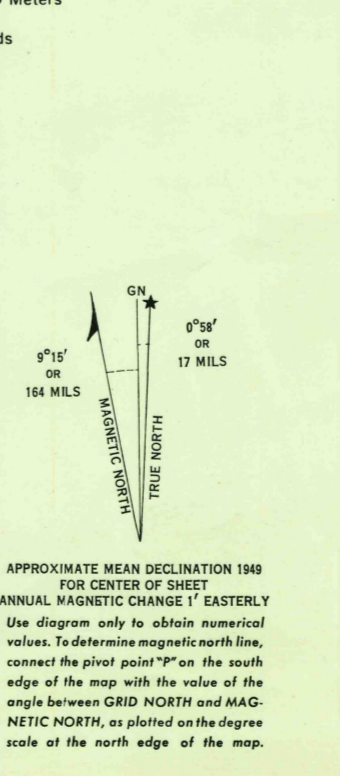


Scale 1:25,000
CONTOUR INTERVAL 20 FEET
DATUM IS MEAN SEA LEVEL

TRANSVERSE MERCATOR PROJECTION
1927 NORTH AMERICAN DATUM

ONE THOUSAND METER UNIVERSAL TRANSVERSE MERCATOR GRID, ZONE 18
BROWN NUMBERED TICKS INSIDE THE HEATLINE INDICATE
THE 1000 METER U. S. POLYCONIC GRID, ZONE A

THE LAST THREE DIGITS OF THE GRID NUMBERS ARE OMITTED
USERS NOTING ERRORS ON THIS MAP ARE URGED TO WARN HEREIN AND FORWARD DIRECTLY TO COMMANDING
OFFICER, ARMY MAP SERVICE, WASHINGTON, D. C. MAPS SO FORWARDED WILL BE RETURNED OR REPLACED IF DESIRED.



HISTORICAL FILES
(DO NOT REMOVE)

MORAVIA, NEW YORK
N4237.5-W7622.5/7.5

USGS Library
Reston, VA.
Topo Archive

FILE COPY
Not to be Removed From Files