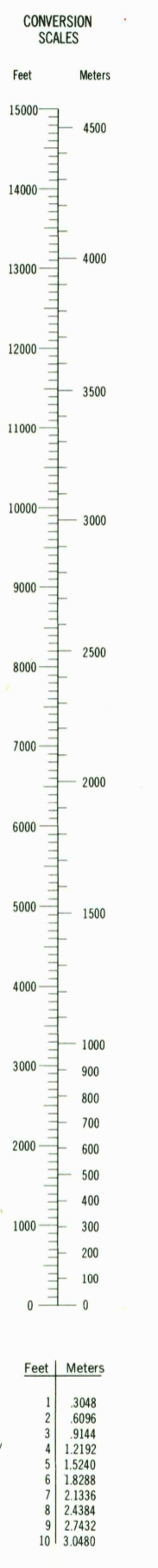
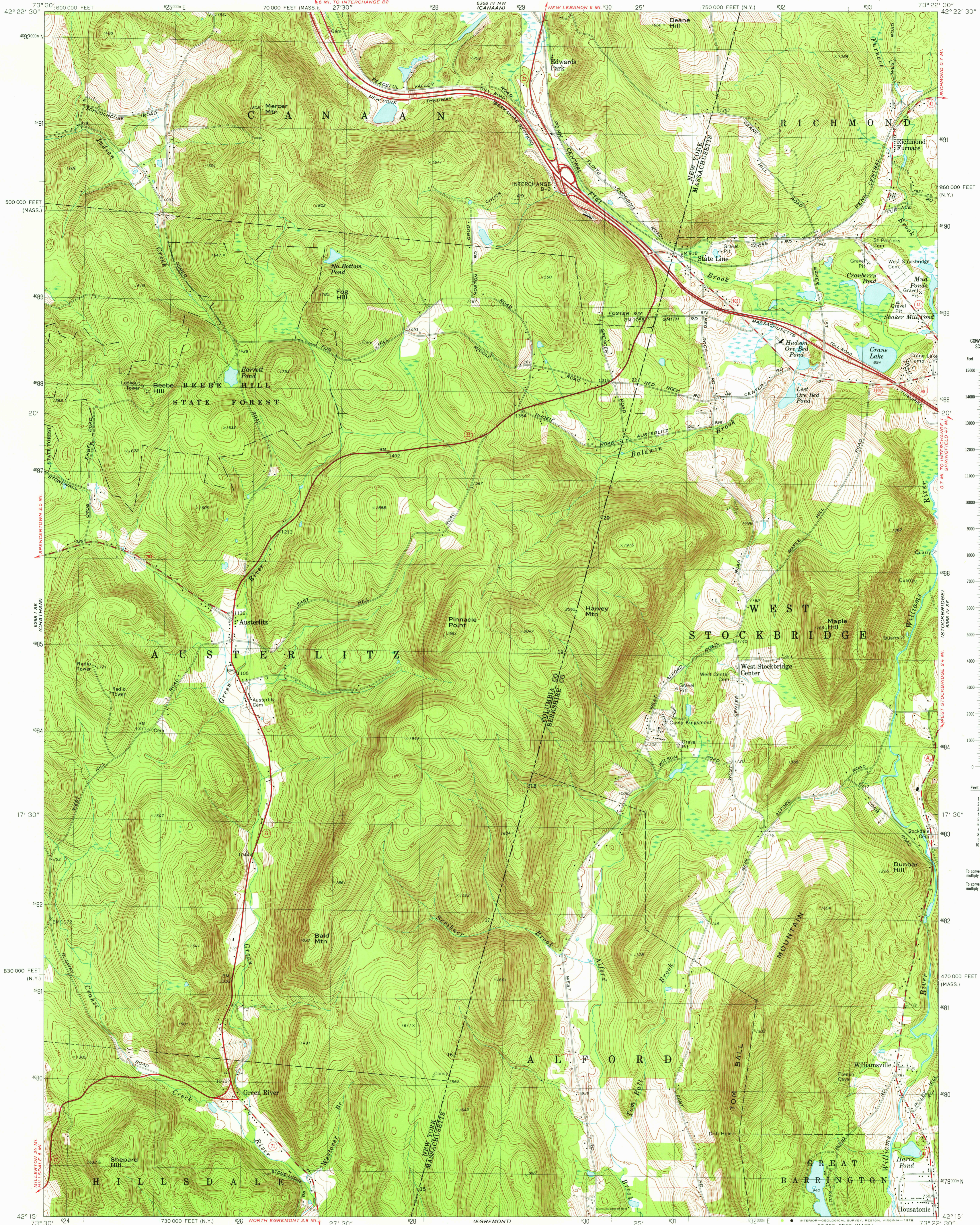
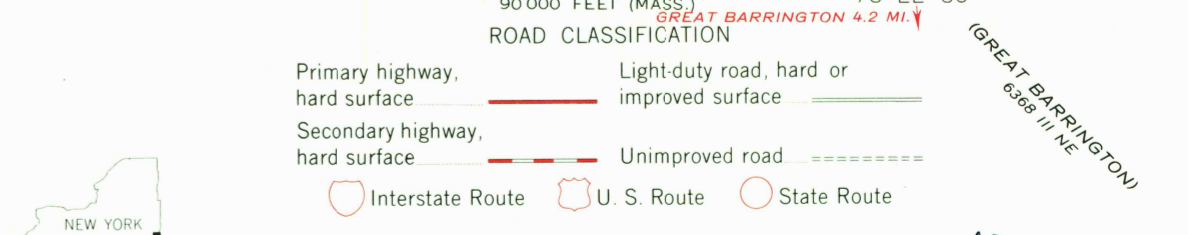
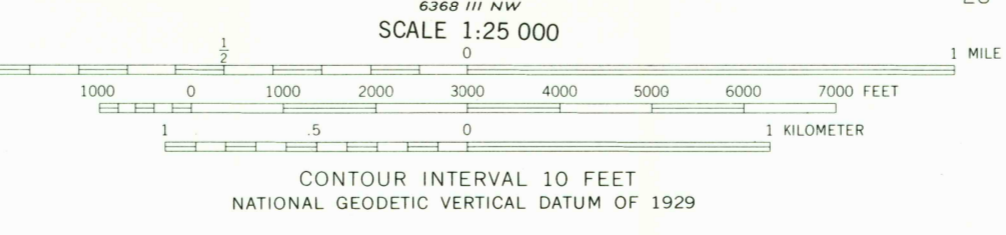
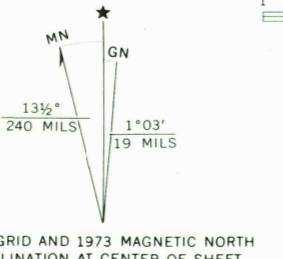


UNITED STATES
DEPARTMENT OF THE INTERIOR
GEOLOGICAL SURVEY

STATE LINE QUADRANGLE
NEW YORK - MASSACHUSETTS
7.5 MINUTE SERIES (TOPOGRAPHIC)



Mapped, edited, and published by the Geological Survey
in cooperation with Massachusetts Department of Public Works
Control by USGS, USC&GS, and Massachusetts Harbor and Land Commission
Topography by photogrammetric methods from aerial photographs
taken 1942 and planimetric surveys 1944. Revised from aerial photographs
taken 1971. Field checked 1973
Polyconic projection. 1927 North American datum
10,000-foot grids based on New York coordinate system, east zone,
and Massachusetts coordinate system, mainland zone
1000-meter Universal Transverse Mercator grid, zone 18
Fine red dashed lines indicate selected fence and field lines where
generally visible on aerial photographs. This information is unchecked



STATE LINE, N. Y. - MASS.
N4215 - W7322.5/7.5
1973
AMS 6368 IV SW - SERIES V821

THIS MAP COMPLIES WITH NATIONAL MAP ACCURACY STANDARDS
FOR SALE BY U.S. GEOLOGICAL SURVEY, RESTON, VIRGINIA 22092
A FOLDER DESCRIBING TOPOGRAPHIC MAPS AND SYMBOLS IS AVAILABLE ON REQUEST

APR 14 1978
5500

USGS
Historical File
Topographic Division