



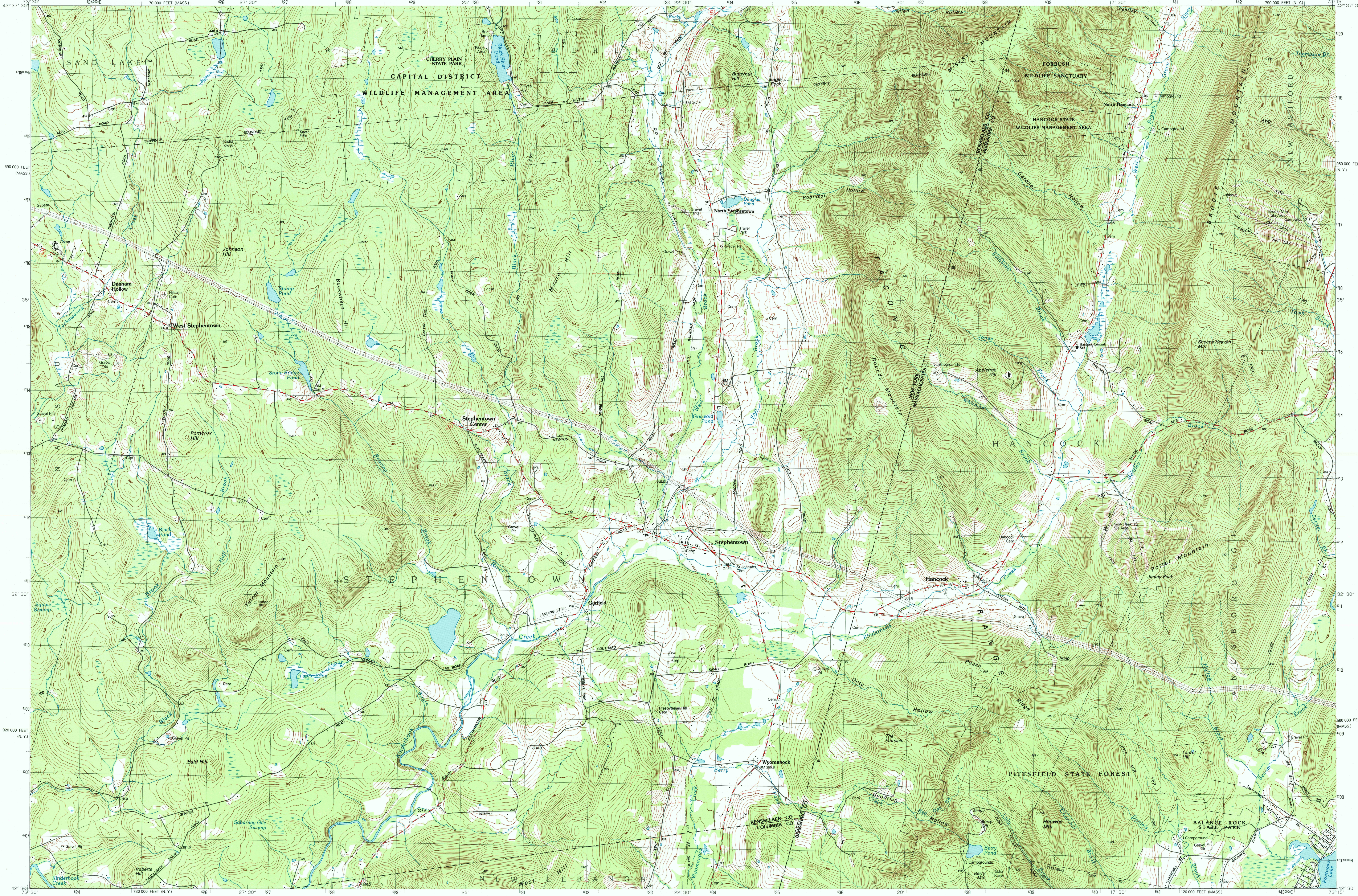
**Stephentown Center
N. Y.—MASS.**
1:25 000-scale metric
topographic map



**7.5 X 15 MINUTE QUADRANGLE
SHOWING**

- Contours and elevations in meters
- Highways, roads and other manmade structures
- Water features
- Woodland areas
- Geographic names

U.S. Department of the Interior
U.S. Geological Survey
1998



Produced by the United States Geological Survey
Derived from imagery taken 1981 and other sources. Photocopied using imagery taken 1998; no major culture or drainage changes observed. Survey control current as of 1984.
Boundaries revised 2000
This area also covered by 7.5-minute, 1:25,000-scale map: Hancock dated 1973 and 1:25,000-scale map: Stephentown Center dated 1945
North American Datum of 1927 (NAD 27). Projection and 1000-meter grid: Universal Transverse Mercator, zone 18 10 000-foot ticks. New York coordinate system, east zone and Massachusetts coordinate system, mainland zone
North American Datum of 1983 (NAD 83) is shown by dashed corner ticks. The values of the shift between NAD 27 and NAD 83 for 7.5-minute intersections are obtainable from National Geodetic Survey NADCON software
There may be private inholdings within the boundaries of the National or State reservations shown on this map

CONTOUR INTERVAL 6 METERS
NATIONAL GEODETIC VERTICAL DATUM OF 1929
CONTOUR ELEVATIONS SHOWN TO THE NEAREST 0.1 METER
OTHER ELEVATIONS SHOWN TO THE NEAREST METER

THIS MAP COMPLIES WITH NATIONAL MAP ACCURACY STANDARDS

Meters	Feet
1	3.2808
2	6.5617
3	9.8425
4	13.1234
5	16.4043
6	19.6852
7	22.9660
8	26.2469
9	29.5278
10	32.8084

To convert meters to feet multiply by 3.2808
To convert feet to meters multiply by 0.3048

Declination	Miles
14°N	1/20
1°N	1/20
1°S	1/20
14°S	1/20

UTM grid convergence (GM) and magnetic declination (MD) at center of map. Diagram is approximate.

Adjoining Maps	1	2	3
1 Averill Park (7.5')			
2 Berlin			
3 North Adams			
4 Newcomb (7.5')			
5 Chatham (7.5')			
6 Fair Chatham (7.5')			
7 Pittsfield West			
8 Pittsfield East			

RECEIVED
JAN 31 2001
ISBN 0-607-94211-0
9 780607 942118

Topographic Map Symbols

Primary highway, hard surface
Secondary highway, hard surface
Light-duty road, hard or improved surface
Unimproved road; trail
Route marker: Interstate, U.S., State
Railroad: standard gage; narrow gage
Bridge: overbridge
Footbridge; overpass; underpass
Built-up area: only selected landmark buildings shown
House; barn; church; school; large structure
Boundary:	
National, with monument
State
County, parish
Civil township, precinct, district
Incorporated city, village, town
National or State reservation; small park
Land grant with monument; found section corner
U.S. public lands survey: range, township; section
Range, township; section line: location approximate
Fence or field line
Power transmission line, located tower
Dam; dam with lock
Cemetery; grave
Campground; picnic area; U.S. location monument
Wellhead; water well; spring
Mine shaft; prospect; adit or cave
Control: horizontal station; vertical station; spot elevation
Contours: index; intermediate; supplementary; depression
Distorted surface: strip mine, lava, sand
Sounding; depth curve
Perennial lake and stream; intermittent lake and stream
Rapids, large and small; falls, large and small
Swamp; marsh
Submerged marsh; land subject to controlled inundation
Woodland; scattered trees
Scrub; mangrove
Orchard; vineyard

A pamphlet describing topographic maps is available on request
FOR SALE BY U.S. GEOLOGICAL SURVEY
P.O. BOX 25286, DENVER, COLORADO 80225
TOTAL RECOVERED FIBER